

12.0 Waitakere

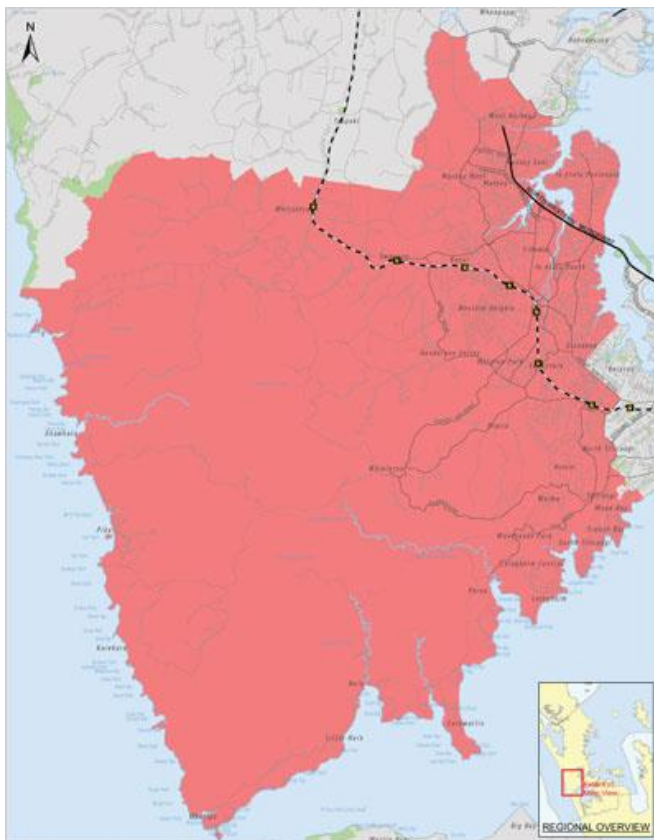
12.1 Introduction

Waitakere Ward is made up of two Local Boards, Waitakere Ranges and Henderson-Massey. It is the largest ward in terms of geographical area within the Waitemata DHB district. It includes the suburbs and townships of Henderson, Glen Eden, Westgate, West Harbour, Te Atatu, Glendene, Lincoln, Massey, Ranui, Swanson, Titirangi, Laingholm and Piha. It encompasses the sparsely populated Waitakere Ranges to the west, coastal settlements and suburban areas. However, only 2.3% of the population live in rural areas, with the remaining 97.7% of the population living in main urban areas.

The ward includes popular recreation sites, including surf beaches and native forest areas of the Waitakere Ranges Regional Park, bringing in many visitors.

Waitakere Hospital is located in the Waitakere ward.

Fig 12.1 Map of Waitakere ward



Source: Auckland Council

12.2 Population and social characteristics

12.2.1 Population

There were 144,255 people usually resident within the Waitakere ward within 2006 making up 30% of the total Waitemata DHB population at that time (table 12.1). There were more females than males. Waitakere ward has a lower proportion of its population in older age groups, 65 years and over, than the entire DHB and a higher proportion of its population under 15 years of age (table 12.1).

Table 12.1 Waitakere ward population by age group and gender, 2006

| Age Group | Waitakere | | | Waitemata DHB | | |
|-----------|-----------------|-----------------|-----------------|------------------|------------------|------------------|
| | Female | Male | Total | Female | Male | Total |
| 0-14 | 17220 (11.9) | 17982 (12.5) | 35202 (24.4) | 51012 (10.6) | 53541 (11.1) | 104553 (21.7) |
| 15-24 | 10284 (7.1) | 10134 (7.0) | 20418 (14.2) | 33288 (6.9) | 34419 (7.1) | 67707 (14.1) |
| 25-44 | 23682 (16.4) | 21372 (14.8) | 45054 (31.2) | 75105 (15.6) | 68004 (14.1) | 143109 (29.7) |
| 45-64 | 15969 (11.1) | 14979 (10.4) | 30948 (21.5) | 58323 (12.1) | 54969 (11.4) | 113295 (23.5) |
| 65-74 | 3831 (2.7) | 3390 (2.4) | 7221 (5.0) | 14880 (3.1) | 13665 (2.8) | 28545 (5.9) |
| 75+ | 3129 (2.2) | 2283 (1.6) | 5412 (3.8) | 14556 (3.0) | 9846 (2.0) | 24402 (5.1) |
| Total | 74115 (51.4) | 70140 (48.6) | 144255 (100) | 247167 (51.3) | 234447 (48.7) | 481611 (100) |

Source: Census 2006

12.2.2 Population trends

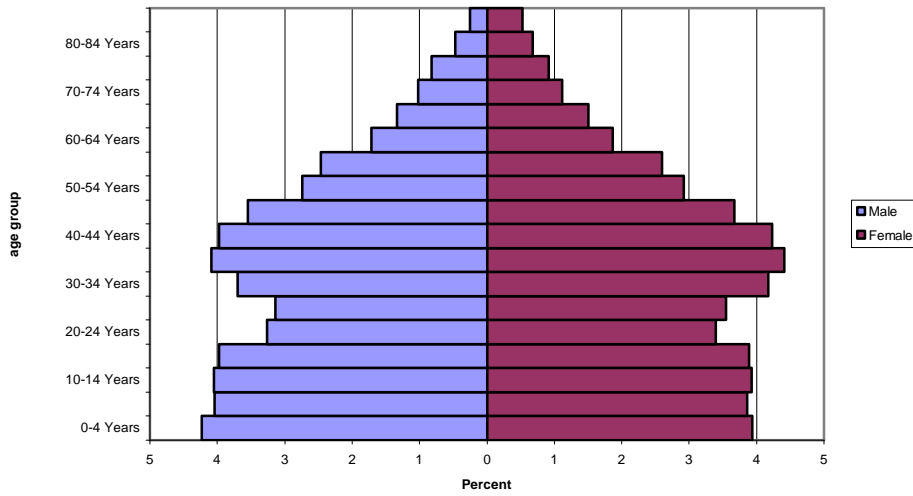
The Waitakere ward population is projected to increase by 35.7% from 2006 to 2031 (table 12.2). The greatest population increase is projected to occur in the 65 years and over age group, and is 11 times greater than the projected increase in the under 15 years age group. This will lead to a change in the population pyramid appearance (figs 12.2 and 12.3).

Table 12.2 Population projections, Waitakere ward

| Age group | 2006 | 2011 | 2016 | 2021 | 2026 | 2031 | Percentage increase 2006 to 2031 |
|-----------|--------|--------|--------|--------|--------|--------|----------------------------------|
| 0-14 | 36389 | 38195 | 39529 | 40488 | 40799 | 41737 | 14.7 |
| 15-64 | 101623 | 110246 | 115616 | 120891 | 125300 | 128336 | 26.3 |
| 65+ | 13101 | 15628 | 19482 | 23490 | 28919 | 34907 | 166.5 |
| Total | 151113 | 164068 | 174628 | 184869 | 195018 | 204980 | 35.7 |

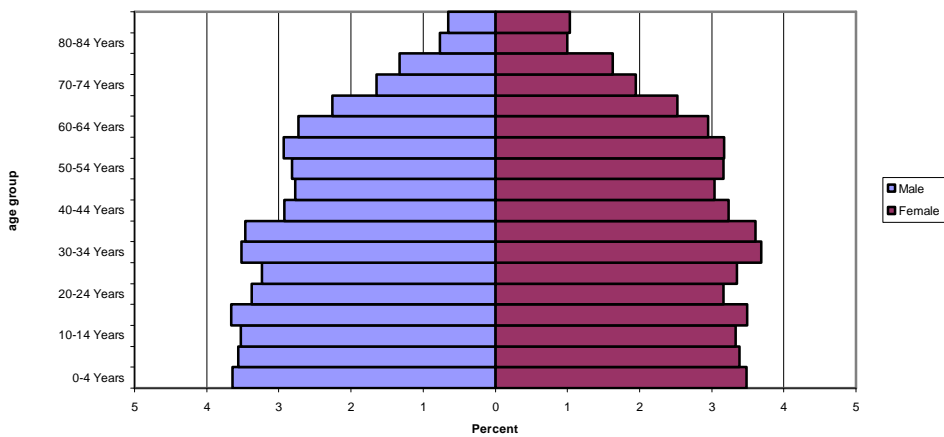
Source: Statistics New Zealand, population projections

Fig 12.2 Waitakere population pyramid, 2006



Source: Statistics New Zealand, census 2006

Fig 12.3 Waitakere population projection, 2026

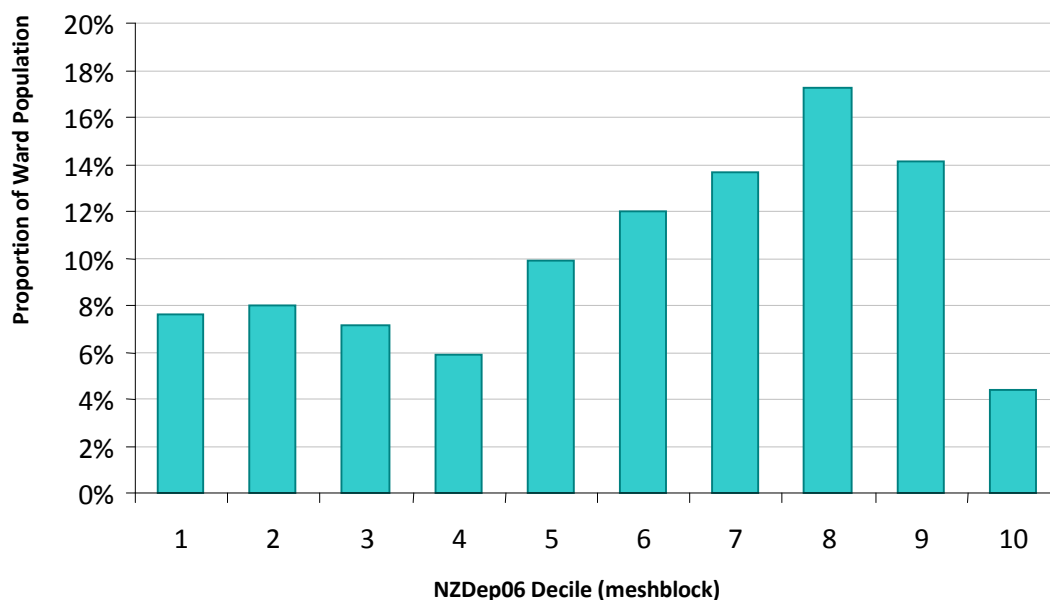


Source: Statistics New Zealand, population projections

12.2.3 Deprivation

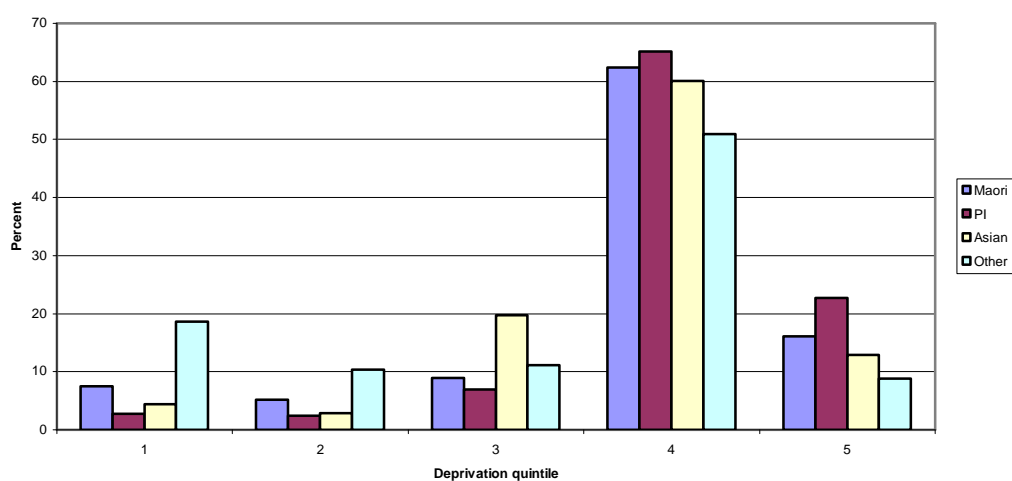
A high proportion of Waitakere ward residents live in areas of high deprivation, particularly in NZDep06 deciles seven to nine (fig 12.4). Maori and Pacific people are more likely than 'other' ethnic groups to live in deprivation quintile four and five and less likely to live in deprivation quintile one and two (fig 12.5).

Fig 12.4 Waitakere deprivation profile, 2006



Source: Statistics New Zealand, usually resident population 2006

Fig 12.5 Deprivation quintile by ethnic group, Waitakere ward 2011



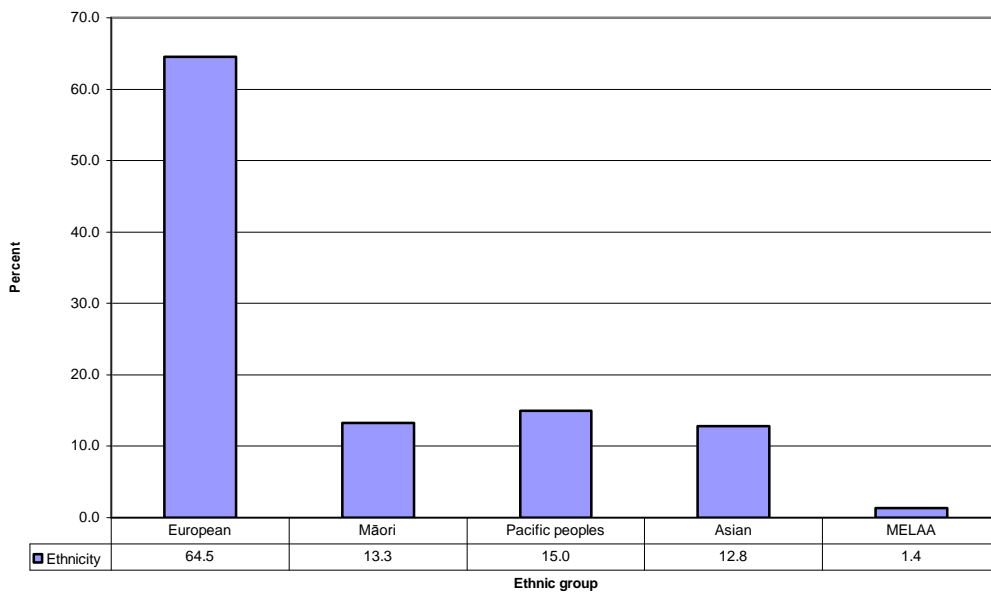
Source: Statistics New Zealand, population estimates 2011

12.2.4 Ethnicity

In 2006, 64% of the Waitakere population was European, 13% Maori, 15% Pacific and 13% Asian (fig 12.6). Waitakere ward has the highest Maori population of all Waitemata DHB wards (table 17.5).

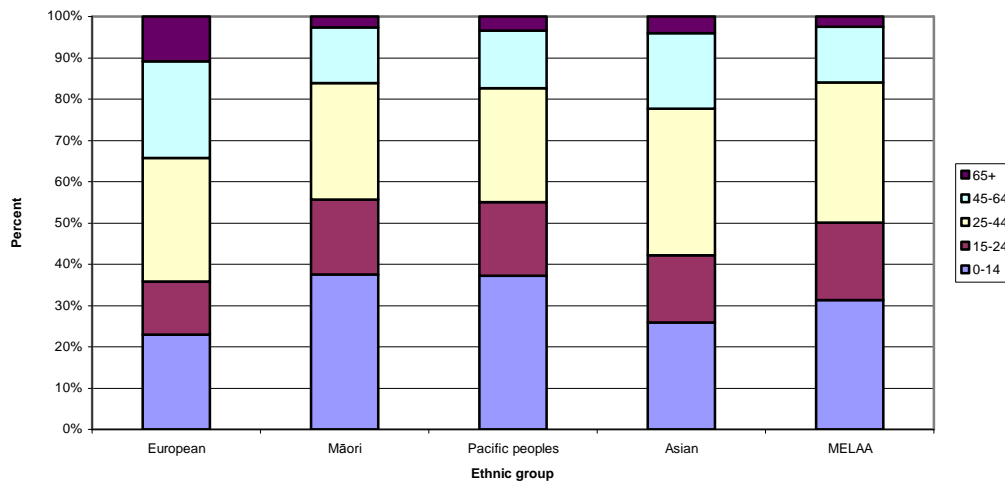
Figure 12.7 shows the age structure of the different ethnic groups. There is a high proportion of the Maori and Pacific populations in the under 15 year and 15 to 24 year age groups in comparison to the European population.

Fig 12.6 Ethnic group, Waitakere ward 2006



Source: Census 2006

Fig 12.7 Ethnic group by age structure, Waitakere ward 2006



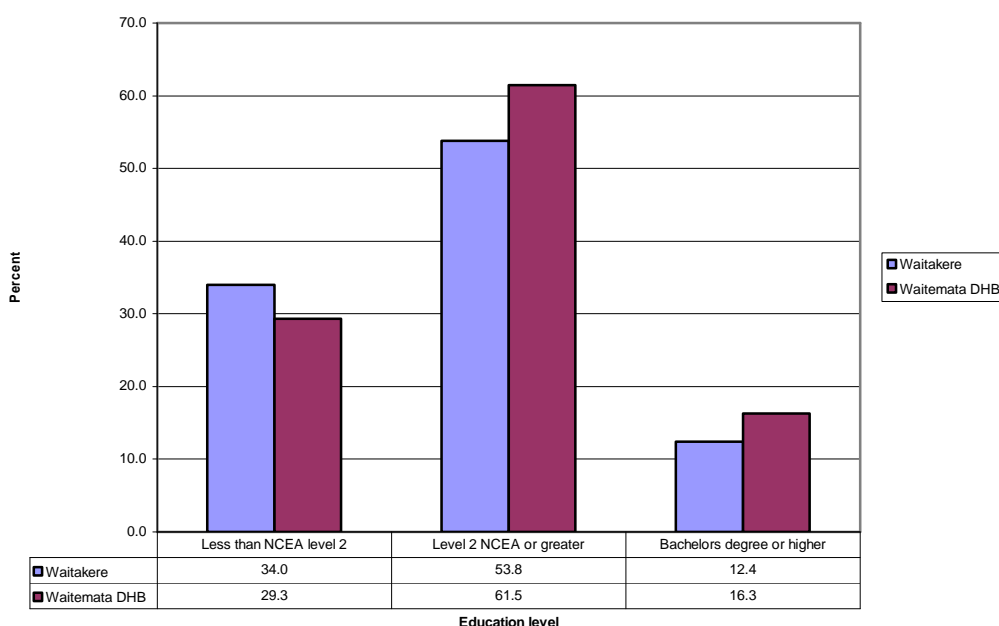
Source: Census 2006

12.2.5 Education level

There are 55 schools in the Waitakere ward, including four private schools. Decile ratings for these schools are fairly evenly spread.⁸

Thirty four percent of the Waitakere population aged 15 years or over have not attained an NCEA level 2 or equivalent qualification, compared to 29.3% of the Waitemata DHB population (fig 12.8). Waitakere ward has the highest proportion of its population not attaining this level of educational achievement of all of the wards within the DHB district (fig 17.7). Approximately 12% of the population have attained a bachelors degree or higher qualification.

Fig 12.8 Education level, Waitakere 2006



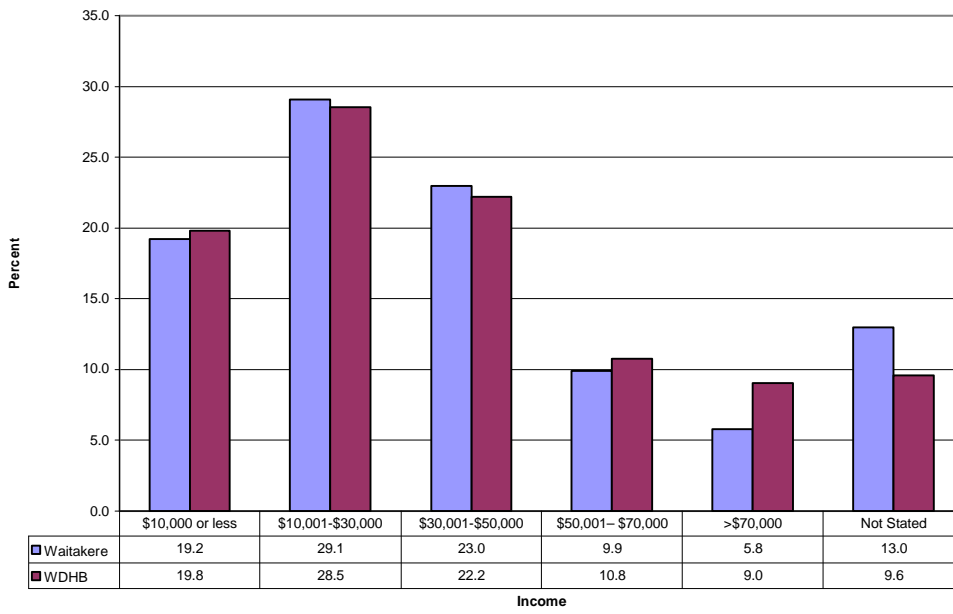
Source: Census 2006

12.2.6 Income

The median personal income of the Waitakere ward population was \$26,348 in 2006. Approximately 48% of the Waitakere ward population aged 15 years or over earned less than \$30,000 (fig 12.9). An income of greater than \$70,000 was earned by 5.8% of the population in this age group within the Waitakere ward, compared to nine percent of the entire Waitemata DHB population aged 15 years or over.

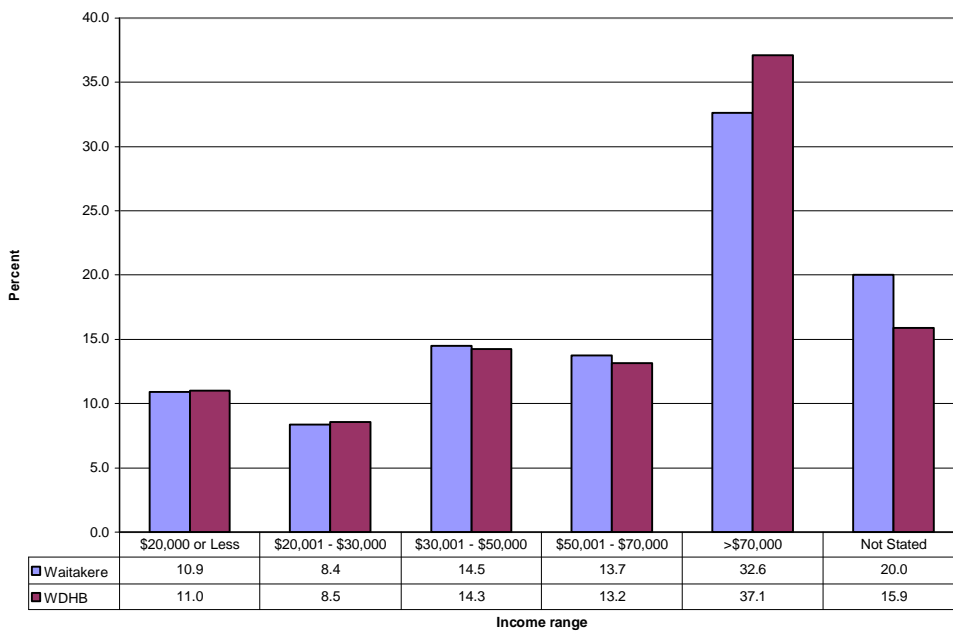
The median household income of the Waitakere ward was \$59,057 in 2006. An income of less than \$30,000 was earned by 19.3% of Waitakere ward households (fig 12.10).

Fig 12.9 Personal income, Waitakere ward 2006



Source: Census 2006

Fig 12.10 Household income, Waitakere ward 2006

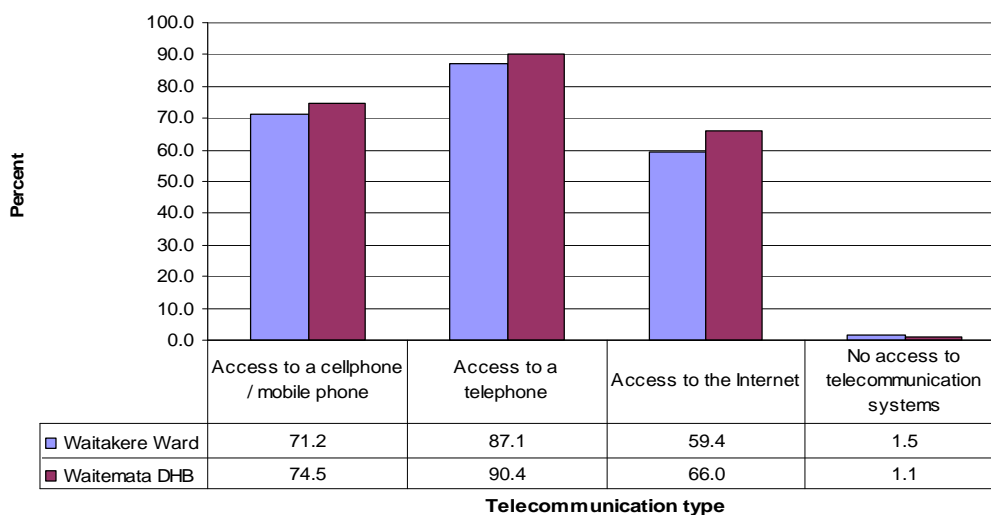


Source: Census 2006

12.2.7 Access to telecommunications

There is no access to telecommunication systems for 1.5% of Waitakere ward households (fig 12.11). A slightly lower proportion of Waitakere ward households have access to a telephone or the internet, than households from across the DHB district.

Fig 12.11 Access to telecommunications, Waitakere ward 2006

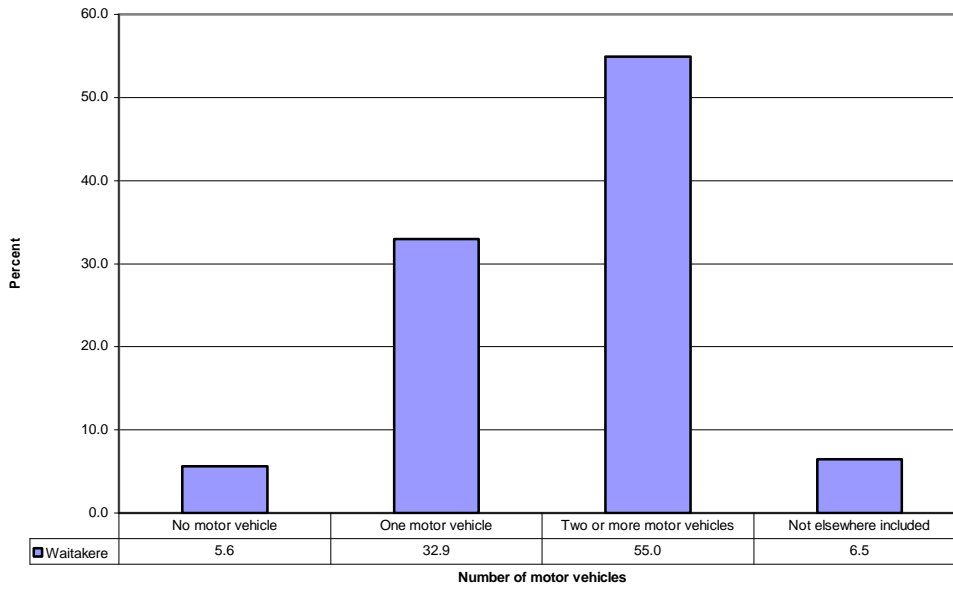


Source: Census 2006

12.2.8 Number of motor vehicles

Approximately five percent of Waitakere ward households do not have ownership of a motor vehicle and may therefore experience transport difficulty (fig 12.12). Over 55% of households in the wards have ownership of two or more households.

Fig 12.12 Motor vehicles per household, Waitakere ward 2006

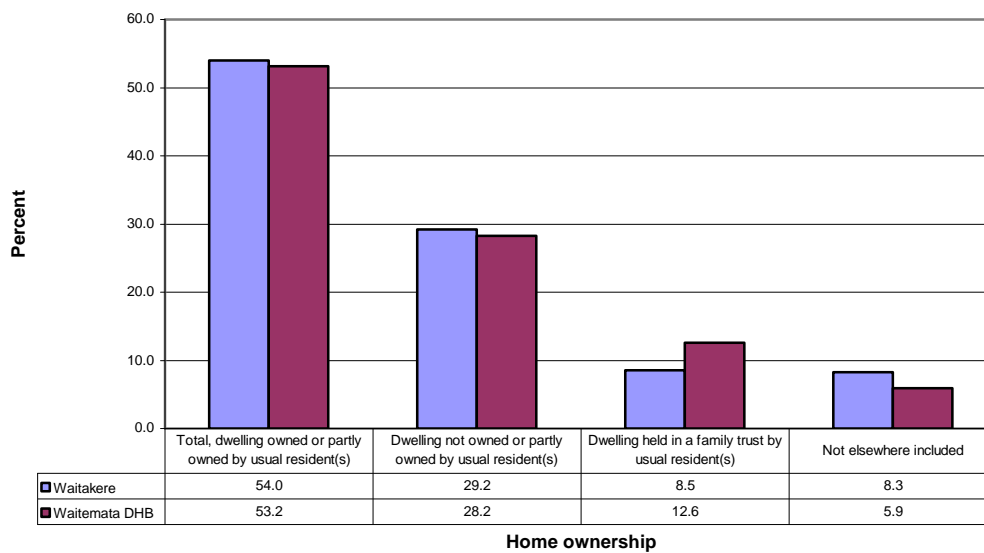


Not elsewhere included category includes not stated and response not identified
 Source: Census 2006

12.2.9 Home ownership

In the Waitakere ward, 62.5% of dwellings are either owned by the usual residents or held within a family trust. This is a slightly lower rate of home ownership than that across the entire DHB (fig 12.13).

Fig 12.13 Home ownership, Waitakere ward 2006



Not elsewhere included category includes not stated and response not identified
 Source: Census 2006

12.2.10 Benefit type

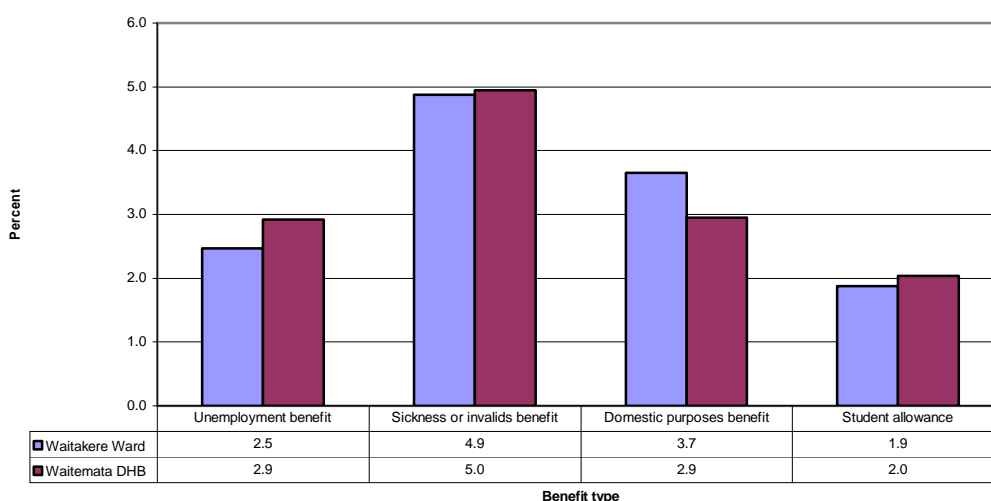
Fifty two percent of Waitakere ward residents aged 15 years or over were employed full time and a further 13% employed part-time in 2006.⁸

The Waitakere ward had 2.5% of its population aged 15 years or over receiving the unemployment benefit and 4.9% receiving either the sickness or invalids benefit in 2006, similar proportions to those seen across the entire DHB (fig 12.14).

Employment in the Waitakere ward grew by 25% from 2000 to 2009, resulting from growth in the health care, social assistance and education sectors. This compares to 20% employment growth across the entire Auckland region.⁸

The domestic purposes benefit was utilised by a higher proportion of the Waitakere ward population than of the Waitemata DHB population in the 15 year or over age group (fig 12.14). This relates to the higher proportion of single parent families in the Waitakere ward than in all of Waitemata DHB (fig 12.15).

Fig 12.14 Percentage of population 15 years or over, on a benefit, Waitakere ward 2006

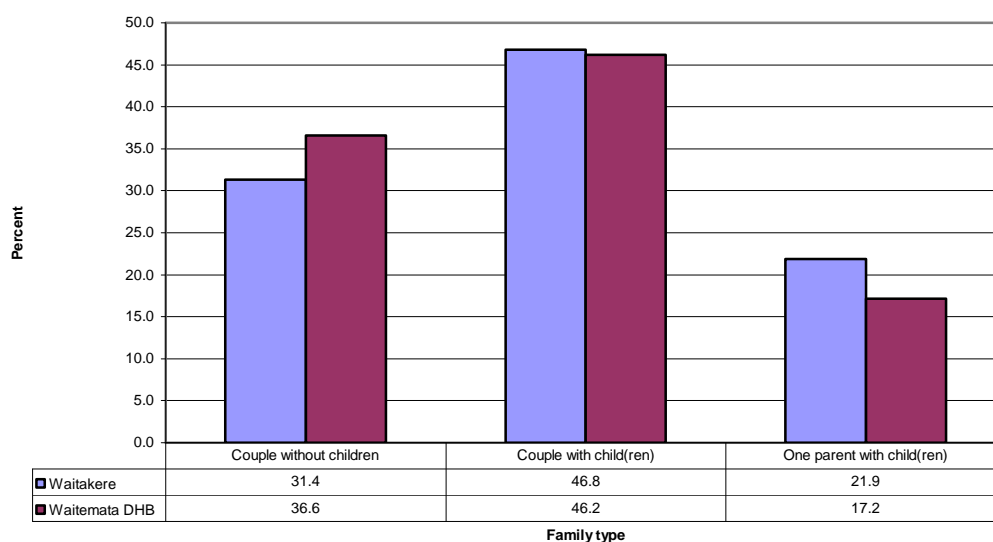


Source: Census 2006

12.2.11 Family composition

Single parent families make up 21.9% of all families in the Waitakere ward (fig 12.15), a higher proportion than that of all families across the Waitemata DHB. The proportion of families with a single parent is higher in the Waitakere ward than in any other ward within the DHB (fig 17.13).

Fig 12.15 Family type, Waitakere ward 2006



Source: Census 2006

12.3 Health determinants

12.3.1 Smoking

There were 21,429 adult smokers in the Waitakere ward in 2006, accounting for 33% of all smokers 15 years of age or over within the Waitemata DHB. Smokers made up 19.6% of the Waitakere ward population, 15 years of age or over, at that time. The age standardised rate of smoking was 198.6 per 1,000 people per year (table 12.3). This was higher than the smoking rate in any other ward within the Waitemata DHB district. The smoking rate was higher in males than females.

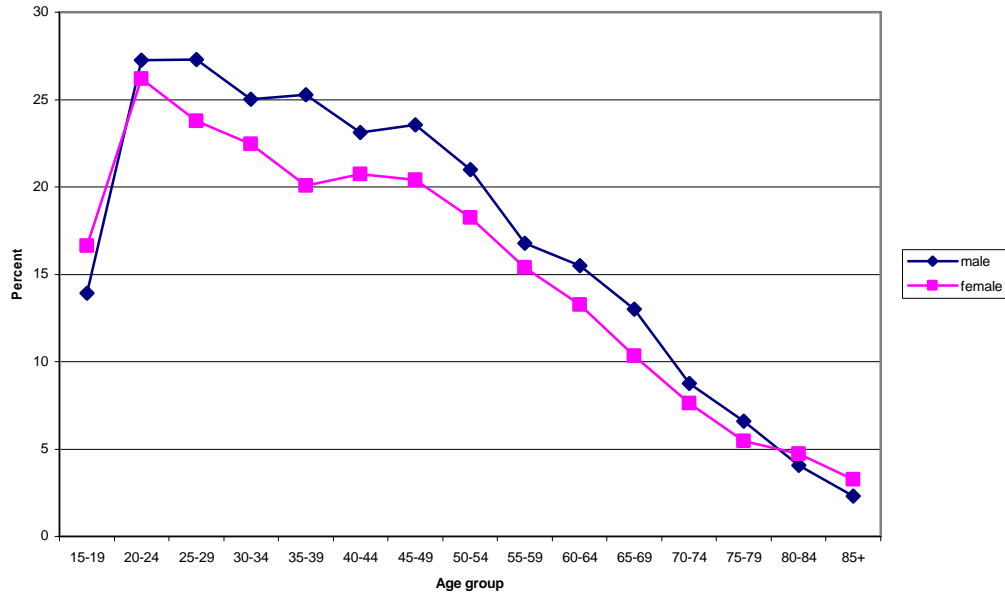
The proportion of the population that smoked peaked in the 20-24 year age group and then declined with increasing age (fig 12.16).

Table 12.3 Age standardised smoking status rate by gender, Waitakere ward 2006

| | Male (per 1000 people per year) | Female (per 1000 people per year) | Total (per 1000 people per year) |
|-----------------|---------------------------------|-----------------------------------|----------------------------------|
| Smoker | 208.9 | 189.2 | 198.6 |
| Previous smoker | 188.6 | 163.6 | 174.7 |

Source: Statistics New Zealand

Table 12.16 Proportion of adults who smoke by age groups and gender, Waitakere Ward 2006

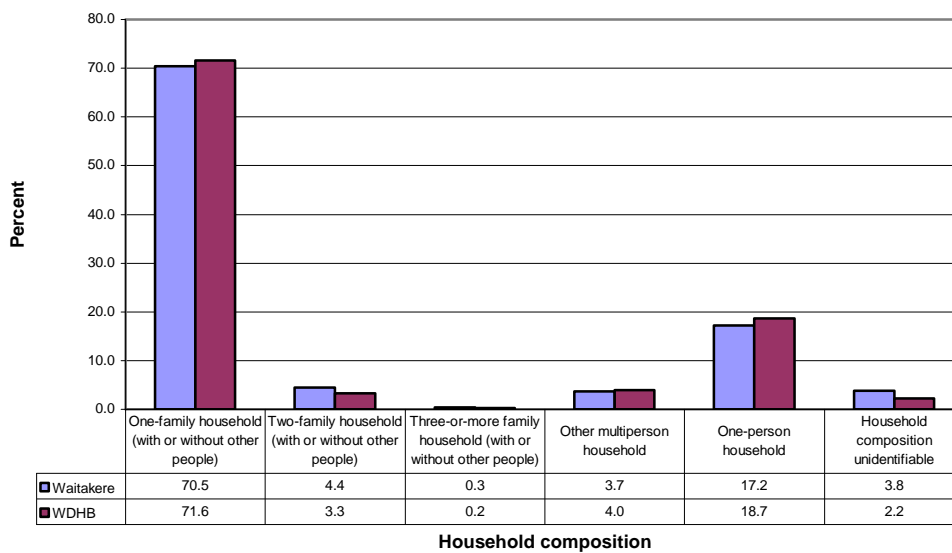


Source: Statistics New Zealand

12.3.2 Household composition

Households in the Waitakere ward are shared by two or more families in 4.7% of cases (fig 12.17). This is a high proportion in comparison with most other wards in the Waitemata DHB district (fig 17.15) and suggests a comparatively high rate of overcrowding in this ward.

Fig 12.17 Household composition, Waitakere ward 2006



Source: Census 2006

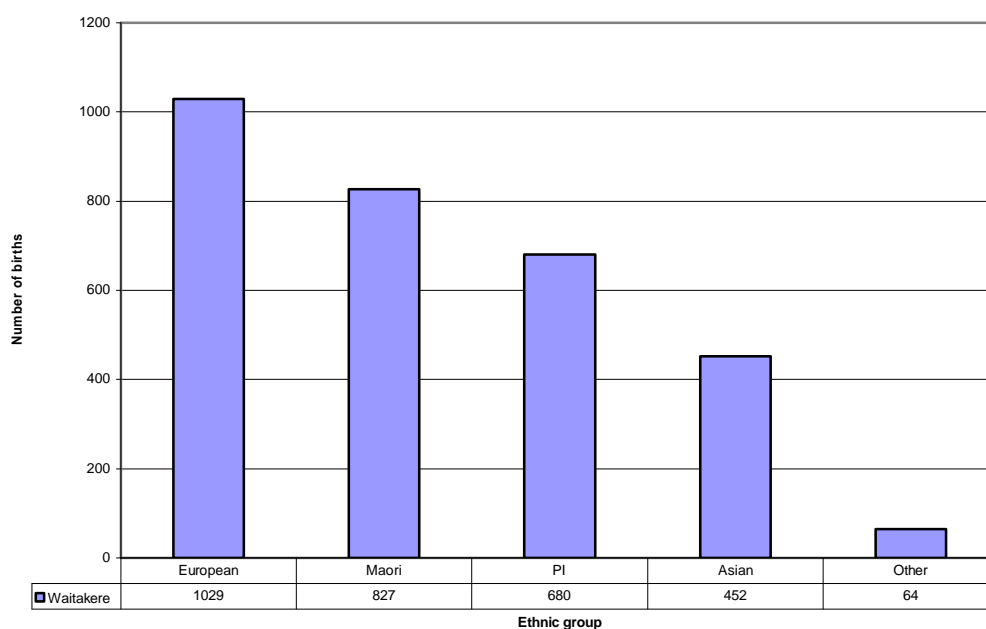
12.4 Health need

12.4.1 Births

There were 2,735 live births in the Waitakere ward during the 2009/2010 year. The birth rate over this period for women aged 15 to 49 years was 69.5 live births per 1,000 women. This rate was higher than the birth rate for any other Waitemata DHB ward (table 17.12). The birth rate was highest in the Maori ethnic group, at 152.5 live births per 1,000 women, which was over three times that of Europeans (fig 12.19).

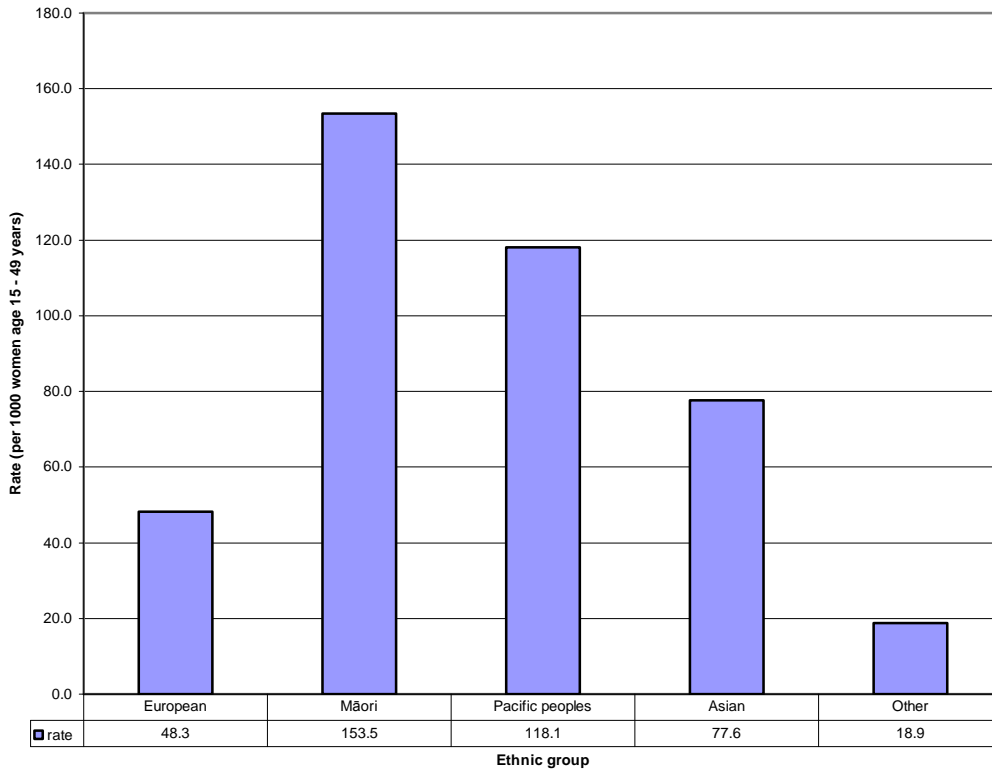
There were 240 live births to teenagers aged 15 to 19 years in 2009/2010. The birth rate for women in this age group was 43.3 per 1,000 females. This was higher than the teen birth rate in any of the other Waitemata DHB wards (table 17.13).

Fig 12.18 Number of births by ethnic group, Waitakere ward 2009/2010



Source: Statistics New Zealand

Fig 12.19 Birth rate by ethnic group, Waitakere ward 2009/2010



Source: Statistics New Zealand

12.4.2 Deaths

There were 742 deaths of Waitakere ward residents in 2009/2010, 27.4% of all Waitemata DHB deaths. The age standardised death rate for this period was 45.9 deaths per 10,000 people. This was high in comparison to the other wards within the Waitemata DHB. The age standardised death rate for Waitemata DHB was 38.6 deaths per 10,000 people per year. Age group specific death rates are provided in table 12.4.

Table 12.4 Deaths by age group, Waitakere ward 2009/2010

| Age group | Number of deaths | Age group specific rate (per 10000 people per year) |
|-----------|------------------|---|
| 0-4 | 17 | 14.5 |
| 5-19 | 8 | 2.3 |
| 20-64 | 175 | 20.5 |
| 65+ | 542 | 428.8 |

Source: Statistics New Zealand

12.4.3 Acute hospitalisations

There were 23,956 acute hospitalisations of Waitakere ward residents in 2009/2010, making up 35.8% of all Waitemata DHB acute admissions. The age standardised acute hospitalisation rate during this period was 164.0 hospitalisations per 1,000 people per year (table 12.5). This rate was significantly higher than that of all other wards within Waitemata DHB (fig 17.19). Age group specific rates are shown in table 12.6. Waitakere ward hospitalisation rates are higher within each age group than hospitalisation rates for the entire DHB population.

Table 12.5 Age standardised acute hospitalisation rate, Waitakere ward 2009/2010

| | Age standardised rate (per 1000 people per year) | 95% CI |
|-----------|--|-------------|
| Waitakere | 164.0 | 161.8-166.1 |
| WDHB | 127.1 | 126.1-128.1 |

Source: NMDS

Table 12.6 Acute hospitalisations by age group, Waitakere ward 2009/2010

| Age group | Waitakere | | WDHB | |
|-----------|-----------|---------------------------------|--------|---------------------------------|
| | Number | Rate (per 1000 people per year) | Number | Rate (per 1000 people per year) |
| 0-4 | 1933 | 164.8 | 3769 | 114.6 |
| 5-19 | 2266 | 65.4 | 5893 | 54.7 |
| 20-44 | 8408 | 154.9 | 21271 | 121.7 |
| 45-64 | 5080 | 164.1 | 13916 | 122.7 |
| 65+ | 6269 | 496.0 | 21981 | 415.0 |

Source: NMDS

12.4.4 Ambulatory Sensitive Hospitalisations

There were 3,762 ASH admissions in the Waitakere ward during 2009/2010, 42.9% of all Waitemata DHB ASH admissions (table 12.7). The age standardised rate of ASH admissions, 27.2 per 1,000 people, is higher than that of all other wards within the Waitemata DHB district (fig 17.21).

Table 12.7 Age standardised ASH rate, Waitakere ward 2009/2010

| | ASH Number | Age standardised rate (per 1000 people per year) |
|-----------|------------|--|
| Waitakere | 3762 | 27.2 |
| WDHB | 8760 | 18.8 |

Source: NMDS

12.4.5 Low birth weight

There were 181 births classified as low birth weight in the Waitakere ward during the 2009/2010 year. The low birth weight rate in Waitakere was 60.4 per 1,000 live births during this time period, similar to that of the other wards within the DHB.

12.4.6 Acute mental health

There were 212 distinct Waitakere ward residents hospitalised with a mental health condition in 2006. The age standardised admission rate was higher than that of the entire Waitemata DHB population (table 12.8). The highest mental health hospitalisation rates occurred in the 20 to 44 year and 65 year and over age groups (table 12.9).

Table 12.8 Age standardised mental health hospitalisation rate, Waitakere ward 2009/2010

| | Age standardised hospitalisation rate (per 100000 people per year) | 95% CI |
|----------------|--|-------------|
| Waitakere Ward | 145.3 | 125.4-165.1 |
| WDHB | 114.9 | 105.3-124.4 |

Source: Waitemata DHB

Table 12.9 Mental health hospitalisations by age group, Waitakere ward 2009/2010

| Age group | Waitakere | | WDHB | |
|-----------|-----------|-----------------------------------|--------|-----------------------------------|
| | Number | Rate (per 100000 people per year) | Number | Rate (per 100000 people per year) |
| 15-19 | 9 | 80.3 | 23 | 63.7 |
| 20-44 | 129 | 237.7 | 314 | 179.7 |
| 45-64 | 48 | 155.1 | 156 | 137.5 |
| 65+ | 26 | 205.7 | 80 | 168.0 |

Source: Waitemata DHB

12.5 Health service utilisation

12.5.1 Mental health

There were 2,956 distinct residents of the Waitakere ward seen in mental health outpatient clinics in 2009/2010, making up 33% of all mental health outpatient clients. The age standardised utilisation rate of mental health outpatients was 20.1 per 1,000 people, a rate higher than that for the entire Waitemata DHB population (table 12.10).

Table 12.10 Mental health outpatient utilisation by unique individuals, Waitakere ward 2009/2010

| | Number | ASR (per 1000 people per year) | 95% CI |
|-----------|--------|--------------------------------|-------------|
| Waitakere | 2956 | 20.1 | 19.4 - 20.8 |
| WDHB | 8921 | 17.5 | 17.1 – 17.8 |

Source: Waitemata DHB

12.5.2 Emergency department

There were 41,433 visits to the emergency department by distinct patients from the Waitakere ward during 2009/2010, 39% of emergency department visits. The age standardised rate of emergency department utilisation was 287.9 per 1,000 people per year, the highest rate of all wards within the Waitemata DHB district, despite an adult emergency service not being available after 10pm within the ward (table 12.11).

Table 12.11 Emergency department utilisation of unique individuals, Waitakere ward 2009/2010

| | Number | ASR (per 1000 people per year) | 95% CI |
|-----------|--------|--------------------------------|-------------|
| Waitakere | 41433 | 287.9 | 285.6-290.1 |
| WDHB | 105894 | 214.7 | 213.6-215.9 |

Source: Waitemata DHB

12.5.3 Pharmaceuticals

Waitakere ward residents utilised 1,319,058 pharmaceutical scripts in 2009/2010. The age standardised rate of script utilisation was 8.9 scripts per person, the highest rate of script use of all wards in the Waitemata DHB district (table 12.12).

Table 12.12 Pharmaceutical script utilisation, Waitakere ward 2009/2010

| | ASR (per person per year) | 95% CI |
|-----------|---------------------------|-----------|
| Waitakere | 8.92 | 8.91-8.94 |
| WDHB | 7.12 | 7.11-7.13 |

Source: Pharmaceutical Collection

12.5.4 NASC

There were 1,449 NASC assessments performed for Waitakere ward residents during the 2009/2010 year. Just 51 of these assessments were for people under the age of 65 years. The age standardised NASC assessment rate was 8.7 assessments per 1,000 people (table 12.13).

Waitakere ward residents utilised 192,020 hours of care during the 2009/2010 year, giving an age standardised rate of care utilisation of 1138 hours per 1,000 people of all ages (table 12.14). Twenty five percent of care hours within Waitemata DHB were utilised by Waitakere ward residents.

Table 12.13 NASC assessment rate, Waitakere ward 2009/2010

| | ASR (per 1000 people per year) | 95% CI |
|-----------|--------------------------------|-----------|
| Waitakere | 8.7 | 8.2-9.1 |
| WDHB | 8.3 | 8.1 – 8.6 |

Source: Waitemata DHB

Table 12.14 Care hour utilisation, Waitakere ward 2009/2010

| | ASR (per 1000 people per year) | 95% CI |
|-----------|--------------------------------|---------------|
| Waitakere | 1138.0 | 1132.8-1143.1 |
| WDHB | 965.2 | 963.0-967.4 |

Source: Waitemata DHB

12.5.5 Elective admissions

There were 7,591 elective hospital admissions of Waitakere ward residents during the 2009/2010 year (table 12.15). Elective hospitalisations from the Waitakere ward made up 33.9% of all elective admissions throughout the Waitemata DHB. The age standardised elective admission rate was higher than that of all wards within the Waitemata DHB district.

Table 12.15 Elective admissions, Waitakere ward 2009/2010

| | Number | ASR (per 1000 people per year) | 95% CI |
|-----------|--------|--------------------------------|-----------|
| Waitakere | 7591 | 50.4 | 49.2-51.5 |
| WDHB | 22376 | 40.9 | 40.3-41.4 |

Source: NMDS

12.6 Specific health needs

The 10 most common diagnoses for potentially avoidable hospitalisations are given in table 12.16. Ischaemic heart disease, respiratory infections and cellulitis were the three most common diagnoses for all wards and local boards within the Waitemata DHB.

Table 12.16 Most common potentially avoidable hospitalisation diagnoses, Waitakere ward 2009/2010

| PAH conditions | Percentage of all conditions | WDHB | Percentage of all conditions |
|-------------------------------|------------------------------|--------------------------|------------------------------|
| IHD/Angina/chest pain | 22.4 | IHD/angina/chest pain | 24.1 |
| Respiratory infections | 14.0 | Respiratory infections | 12.4 |
| Cellulitis | 9.8 | Cellulitis | 8.6 |
| ENT infections | 7.2 | ENT infections | 6.0 |
| Asthma | 6.4 | Asthma | 4.9 |
| CORD | 5.0 | Dental conditions | 4.6 |
| Dental conditions | 4.8 | CORD | 4.4 |
| Kidney/urinary infection | 3.8 | Kidney/urinary infection | 4.2 |
| Sexually transmitted diseases | 2.6 | Ruptured appendix | 3.3 |
| Epilepsy | 2.5 | Gastroenteritis | 2.7 |

Source: NMDS

12.7 Service volumes

The volumes of distinct patients, from the Waitakere ward, seen in outpatient clinics over the 2009/2010 are shown in table 12.17.

Table 12.17 Community service volumes of unique individuals, Waitakere ward 2009/2010

| Service type – Waitakere | Patient volumes | |
|--|-------------------------|-------------------------|
| | Initial appointment | Subsequent appointments |
| Adult services | | |
| Cardiology Outpatients | 1953 | 3289 |
| Diabetes Outpatients | 509 | 1031 |
| General Medical Outpatients | 1032 | 1992 |
| General Surgical Outpatients | 1434 | 4131 |
| Paediatric services | | |
| General paediatric outpatients | 1386 | 1517 |
| Paediatric cardiology outpatients | 90 | 363 |
| Paediatric neurology outpatients | 39 | 259 |
| Paediatric endocrinology outpatients | 34 | 381 |
| Paediatric respiratory outpatients | 15 | 130 |
| Paediatric oncology outpatients | 10 | 636 |
| Total Paediatrics outpatients | 1574 | 3286 |
| Older Adult services | All appointments | |
| Health of Older Adult Services outpatients | 487 | |
| District Nursing Referrals | 2003 | |
| Mental Health outpatients | | |
| 0 – 19 age group | 612 | |
| 20 – 64 age group | 1953 | |
| 65+ age group | 391 | |
| Total | 2956 | |

Source: NNPAC and Waitemata DHB

12.8 Health services

12.8.1 General practitioner

There were 84.5 full time equivalent GPs working within the Waitakere Ward during the last three months of 2009, equivalent to 59 GPs per 100,000 people. During the same time period there were 65 GPs per 100,000 people across the entire Waitemata DHB. There are 25 GP practices within the Waitakere Ward.

Fifty seven percent of the Waitakere Ward population were enrolled with a GP practice within their own Ward at the end of 2009.

12.8.2 Aged care facilities

There are 13 aged care residential facilities in the Waitakere Ward. These facilities provide 332 rest home beds, 274 hospital care beds and 52 dementia care beds (table 12.18).

Table 12.18 Aged residential care bed numbers, Waitakere ward 2010

| Bed type | Number of beds | Beds per 1000 residents aged 65 years and over |
|-------------------|----------------|--|
| Rest home bed | 332 | 26.3 |
| Hospital care bed | 274 | 21.7 |
| Dementia care bed | 52 | 4.1 |

Source: Ministry of Health 2010 certified facilities database and ElderNet

12.8.3 Birthing units

Waitakere Hospital is located within the Waitakere ward. It includes a birthing unit with eight birthing beds (table 12.19).

Table 12.19 Birthing unit bed numbers, Waitakere ward 2010

| Bed type | Number |
|----------------------|--------|
| Birthing | 8 |
| Postnatal | 29 |
| Antenatal assessment | 0 |
| Total | 37 |

Source: Waitemata DHB

12.8.4 After hours GP services

There are two after hours GP services within the Waitakere Ward (table 12.20). One of these is open 24 hours a day. Additionally there is an emergency department at the Waitakere Hospital, which is open from 8am to 10pm, seven days a week for adults, and which provides 24 hour paediatrics emergency services for children aged less than 15 years.

Table 12.20 After hours GP practices, Waitakere ward 2010

| After hours GP practice | Hours open |
|-------------------------|---|
| Westgate Medical Centre | 8am to 8pm Monday to Friday 9am to 6pm Saturday and Sunday |
| Whitecross Westcare | 24 hours a day, 7 days a week |

Source: Waitemata DHB

12.8.5 Hospitals and Hospices

The Waitakere ward has one hospital. The Waitakere hospital is a publicly funded hospital..

There are no hospices providing inpatient care within Waitakere ward. Hospice West Auckland provides community hospice services.

12.8.6 Maori providers

Wai Health is located within the Waitakere Ward. This Maori health provider is part of the Waioara Healthcare PHO and makes up one part of the Te Whanau o Waipareira Trust, (others include Wai Whanau and Wai Tech). Wai Health provides a wide range of health services, including GP and nurse clinics, immunisations, minor surgery, screening programmes, oral health, tamariki ora and mental health services.

12.8.7 Pacific providers

West Fono is a Pacific health community trust, located within the Waitakere Ward. It is a member of the HealthWest PHO. West Fono provides a range of services in mental health, community and outreach services, and GP services. Community health services provided include screening, health promotion, community exercise programmes, gardening programmes, family support services and community mental health support services.

12.8.8 PHO services

HealthWest and Waiora provide healthcare services within the Waitakere ward. Some of the services provided by these PHOs are shown in table 12.21.

Table 12.21 PHO community health care provision, Waitakere ward 2010

| HealthWest |
|--|
| Immunisation outreach B4 Schools checks School based clinics Diabetes Self Management Education Podiatry services (Podiatry services are provided to high needs people with diabetes who have at risk feet). Retinal eye screening (provided at Waitakere Hospital. The service aims to screen every known person with diabetes in Waitakere at least once every two years.) Primary mental health youth services (includes health psychology) Health psychology services Smoking cessation programmes |
| Waiora |
| B4 schools checks Diabetes Self Management Education Podiatry Outreach immunisation Smoking cessation |

Source: HealthWest PHO and Waiora PHO website

12.8.9 DHB community services

Mental health services

A wide range of mental health and addiction services are based within the Waitakere ward (table 12.22). These include Maori and Pacific mental health services.

Table 12.22 DHB community mental health services, Waitakere ward 2010

| Health service | Location |
|---|-------------------------------|
| Adult mental health services | Paramount Drive, Henderson |
| Marinoto West child and youth team | Paramount Drive, Henderson |
| Mental health services for older adults | Waitakere Hospital, Henderson |
| Early Psychosis Intervention team | Paramount Drive, Henderson |
| Maternal Mental Health Service | Waitakere Hospital, Henderson |
| Whitiki Maurea | Paramount Drive, Henderson |
| Takanga a Fohe | Paramount Drive, Henderson |
| CADS West | Trading Place, Henderson |

Source: Waitemata DHB

Surgical outpatient services

Waitakere Hospital, located within the Waitakere ward, provides a number of surgical outpatient clinics in a range of specialties.

Paediatric services

Paediatric outpatient clinics are held at two different sites within the Waitakere ward, on the Te Atatu Peninsula and at the Waitakere Hospital in Henderson (table 12.23).

Public health nurses are based at Waitakere Hospital. They work within the community and within local schools (table 12.24).

A child development service is located at the Child Health Unit at the Waitakere Hospital.

Table 12.23 Paediatric community services, Waitakere ward 2010

| Paediatric community service | Location |
|------------------------------|---|
| Paediatric outpatient clinic | Te Atatu Peninsula Waitakere Hospital, Henderson |
| Public Health Nurse | Waitakere Hospital |
| Child development centre | Waitakere Hospital |
| Home care 4 kids | Waitakere Hospital |

Source: Waitemata DHB

Table 12.24 List of schools in which Waitemata DHB public health nurses have a presence, Waitakere ward 2010

| Schools |
|---------------------------------------|
| Henderson Intermediate |
| Henderson High |
| Lincoln Heights Primary |
| Sunnyvale Primary |
| Western Heights Primary |
| Massey High |
| Rangeview Intermediate |
| Don Buck Primary |
| Royal Road School |
| West Harbour Primary |
| St Paul's Primary |
| Matipo School |
| Peninsula Primary |
| Rutherford Primary |
| Te Atatu Intermediate |
| Westbridge Residential School |
| Holy Cross School |
| Arohanui Special Needs School |
| Glendene Primary |
| Henderson Primary |
| Tiromoana |
| West City Christian College |
| Kelston Girls |
| Edmonton Primary |
| Flanshaw Road School |
| Massey Primary |
| Pomaria Road School |
| Rutherford College |
| Colwill Primary |
| Western Heights Primary |
| Bruce McLaren Intermediate |
| Liston College |
| Waitakere College |
| St Dominic's College |
| Henderson South Primary |
| Summerland Primary |
| Birdwood Primary |
| Jireh Christian School |
| Henderson North Primary |
| Ranui Primary |
| Nga Kakano Christian Bilingual School |
| Te Kura Kaupapa Maori O Te Kootuku |
| Sunderland College |
| Seventh Day Adventist School |
| Tu Tangata |
| Glen Eden Primary |
| Waitakere Primary |
| Konini Primary |
| Swanson Primary |
| Glen Eden Intermediate |
| Prospect Primary |
| Henderson Valley School |
| Kaurilands Primary |
| Titirangi Rudolf Steiner School |
| Tirirangi School |
| Laingholm Primary |
| Woodlands Park Primary |
| He Wero O Nga Wahine Teen Parent Unit |
| Oratia School |
| Hoani Waititi Kura kaupapa |
| Hoani Waititi Marae Alt Ed |

Source: Waitemata DHB

Health services for older people

A number of outpatient clinics for older adults are provided at the Waitakere Hospital. These include consultant, registrar and gerontology nurse clinics (table 12.25). NASC and district nursing staff are based at the Waitakere Hospital. A range of community allied health services are also based at the Waitakere Hospital (table 12.26). While these services will see patients from all age groups, work with older people is likely to form a large proportion of their work. District nursing is available seven days a week, from 8.00 am until 9.30 pm.

Table 12.25 Health services for older people, Waitakere ward 2010

| Health service | Location |
|---|--------------------|
| NASC | Waitakere Hospital |
| Geriatrician Tuesdays - 2 consultant and 1 registrar clinic Wednesday - 1 consultant and 2 registrar clinics Thursday - 1 consultant, 1 registrar and gerontology nurse clinics | Waitakere Hospital |
| District nursing - 18.83 FTE (actual and budgeted) | Waitakere Hospital |

Source: Waitemata DHB

Table 12.26 Community allied health services, Waitakere ward 2010

| Community Allied Health Services | Location |
|---|--------------------|
| - Occupational therapist - Physiotherapist - Dietician - Speech language therapist - Gerontology nurses | Waitakere Hospital |

Waitemata DHB

Diabetes services

Diabetes outpatient clinics are held at Waitakere Hospital. Satellite clinics are held in Te Atatu two days a month. The satellite clinics are nurse and dietician led.

Table 12.27 Diabetes outpatient services, Waitakere ward 2010

| Diabetes Service | Location |
|----------------------------|--------------------|
| Diabetes outpatient clinic | Waitakere Hospital |
| Diabetes satellite clinic | Te Atatu |

Source: Waitemata DHB

Medical outpatient clinics

Some medical outpatient clinics are held at the Waitakere Hospital.