

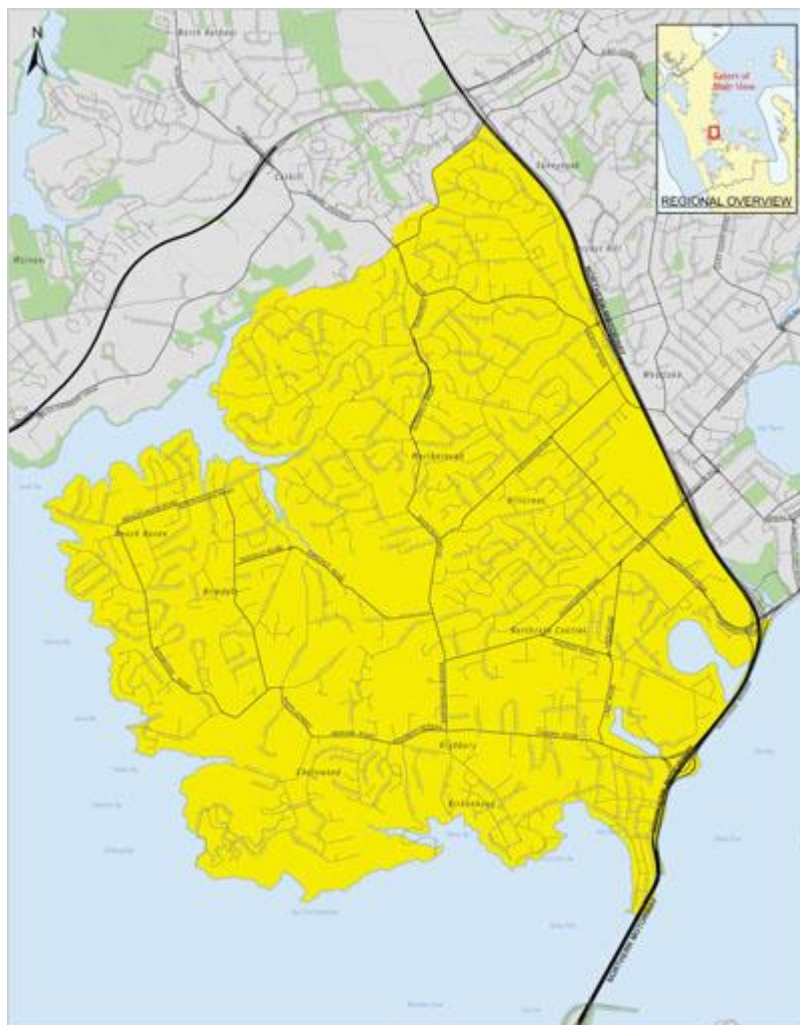
10.0 Kaipatiki

10.1 Introduction

The Kaipatiki local board is part of the North Shore ward. It is situated on Auckland's North Shore, to the west of the northern motorway which forms its eastern boundary. It includes the suburbs of Northcote, Birkenhead, Glenfield, Hillcrest, Highbury, Birkdale and Beach Haven.

This local board is predominantly residential and all of it is classified as an urban area. Town centres in the local board area include the Glenfield and Birkenhead Shopping Centres and a retail hub at Northcote. Industrial areas and commercial areas are located in Wairau Valley and in Glenfield. The North Shore campus of AUT University is also located within Kaipatiki ward.

Figure 10.1 Map of Kaipatiki local board



Source: Auckland Council

10.2 Population and social characteristics

10.2.1 Population

There were 79,122 people usually resident within the Kaipatiki local board at the 2006 census. This population made up 60% of the North Shore ward and 16.4% of the Waitemata DHB population. The age group and gender breakdown of the local board are provided in table 10.1. There is a higher proportion of females than males. The proportion of the population aged 65 years or over was slightly lower in Kaipatiki than in the Waitemata DHB.

Table 10.1 Kaipatiki population by age group and gender, 2006

Age Group	Kaipatiki			Waitemata DHB		
	Female	Male	Total	Female	Male	Total
0-14	7605 (9.6)	7953 (10.1)	15558 (19.7)	51012 (10.6)	53541 (11.1)	104553 (21.7)
15-24	6273 (7.9)	6423 (8.1)	12696 (16.0)	33288 (6.9)	34419 (7.1)	67707 (14.1)
25-44	13293 (16.8)	12546 (15.9)	25839 (32.7)	75105 (15.6)	68004 (14.1)	143109 (29.7)
45-64	9114 (11.5)	8340 (10.5)	17454 (22.1)	58323 (12.1)	54969 (11.4)	113295 (23.5)
65-74	2211 (2.8)	2001 (2.5)	4212 (5.3)	14880 (3.1)	13665 (2.8)	28545 (5.9)
75+	2073 (2.6)	1290 (1.6)	3363 (4.3)	14556 (3.0)	9846 (2.0)	24402 (5.1)
Total	40569 (51.3)	38553 (48.7)	79122 (100)	247167 (51.3)	234447 (48.7)	481611 (100)

Source: Census 2006

10.2.2 Population trends

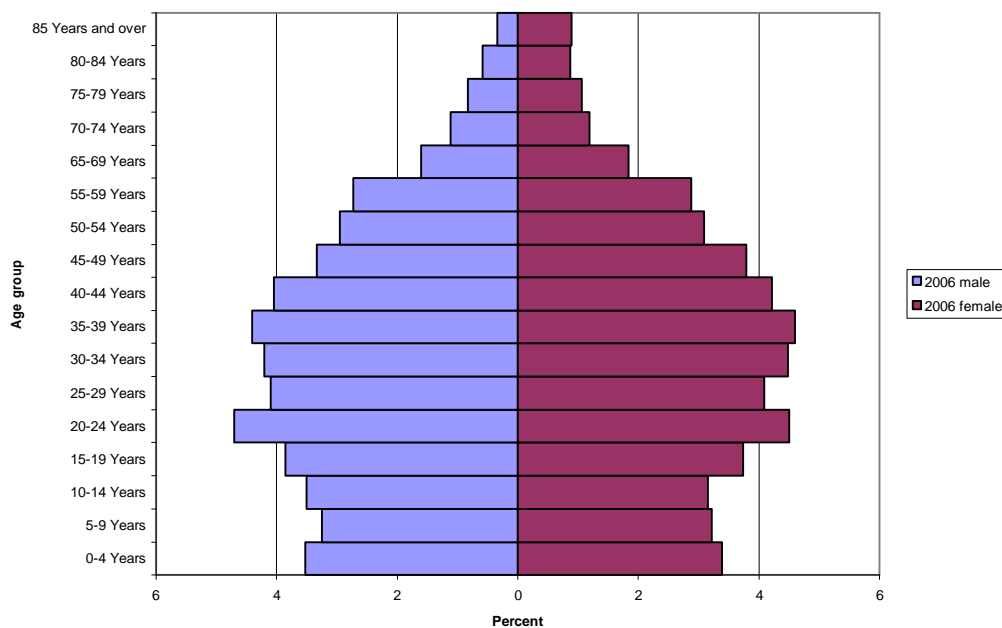
The population within Kaipatiki is projected to increase by 24.2% from 2006 to 2031 (table 10.2). The projected increase in the 65 year and over age group is ten times than in the zero to fourteen year age group.

Table 10.2 Population projection, Kaipatiki

Age	2006	2011	2016	2021	2026	2031	Percentage increase 2006 to 2031
0-14	16492	17255	17997	18558	18303	18209	10.4
15-64	61022	63320	65026	67091	69417	71089	16.5
65+	8466	10058	12015	13594	15445	17476	106.4
Total	85980	90633	95037	99243	103165	106774	24.2

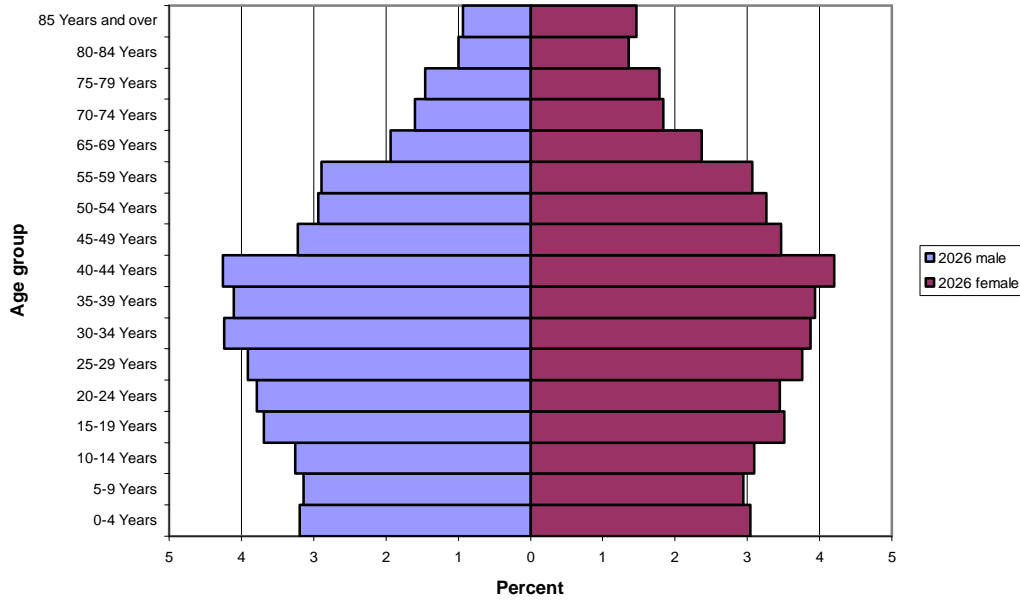
Source: Statistics New Zealand population projections

Fig 10.2 Kaipatiki population pyramid, 2006



Source: Statistics New Zealand, Census 2006

Fig 10.3 Kaipatiki population projection, 2026

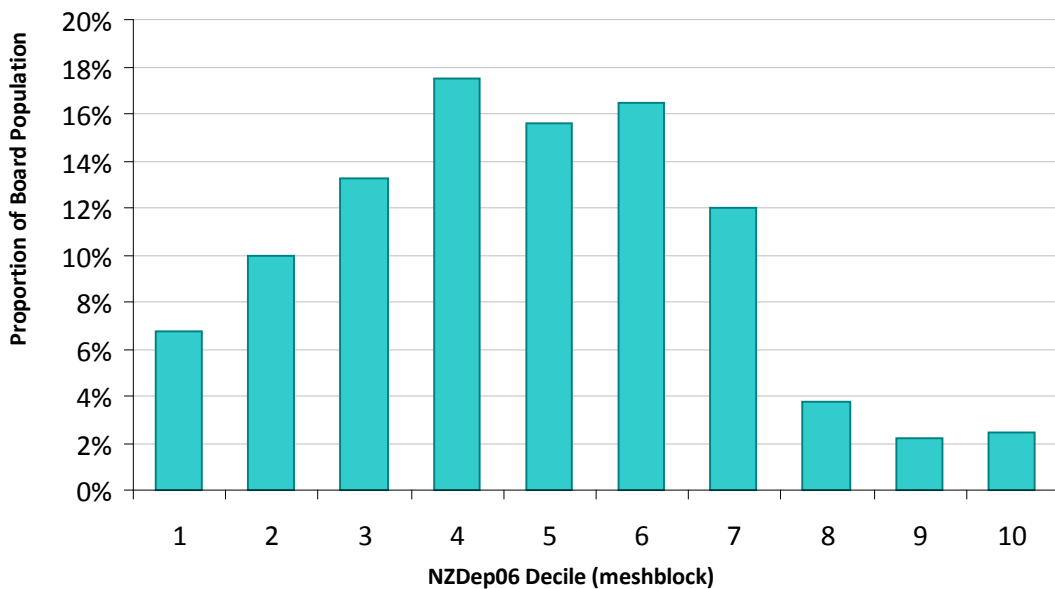


Source: Statistics New Zealand, population projections

10.2.3 Deprivation

The greatest proportion of Kaipatiki residents live in areas with NZDep06 scores between four to six (fig 10.4). A low proportion of residents live in areas with NZDep06 scores greater than eight.

Fig 10.4 Kaipatiki deprivation profile, 2006

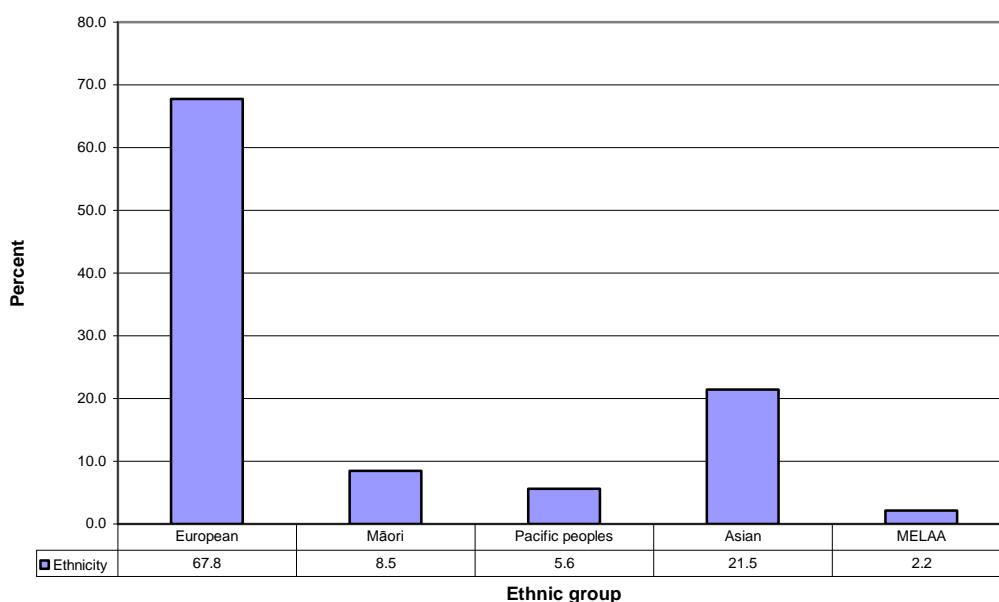


Source: Statistics New Zealand, usually resident population 2006

10.2.4 Ethnicity

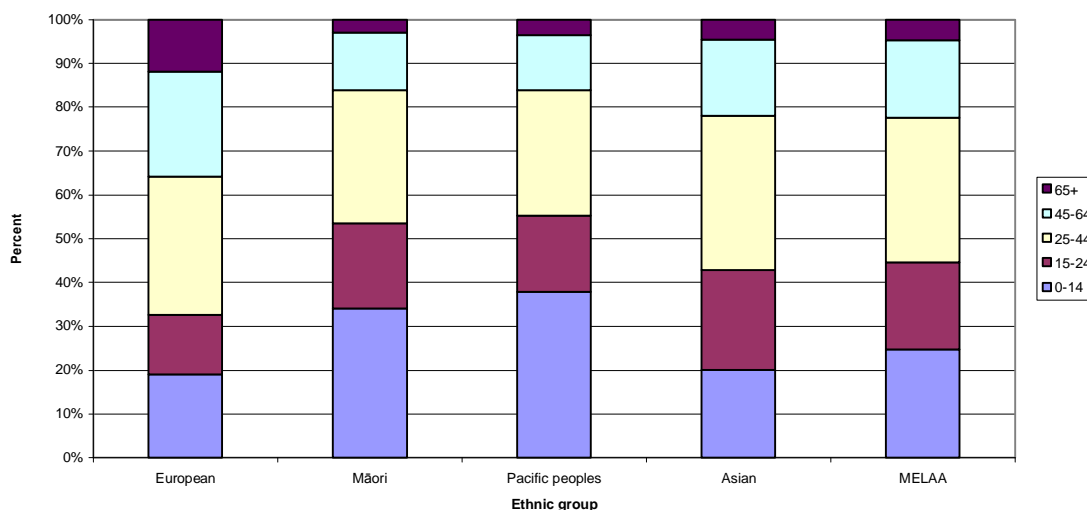
Sixty eight percent of the Kaipatiki population identified as European at the 2006 census (fig 10.5). The Asian ethnic group made up the next highest proportion of the population, at 21.5%. Maori and Pacific people have a higher proportion of their population in young age groups than other ethnic groups (fig 10.6).

Fig 10.5 Ethnic group, Kaipatiki local board 2006



Source: Census 2006

Fig 10.6 Ethnic group by age structure, Kaipatiki local board 2006



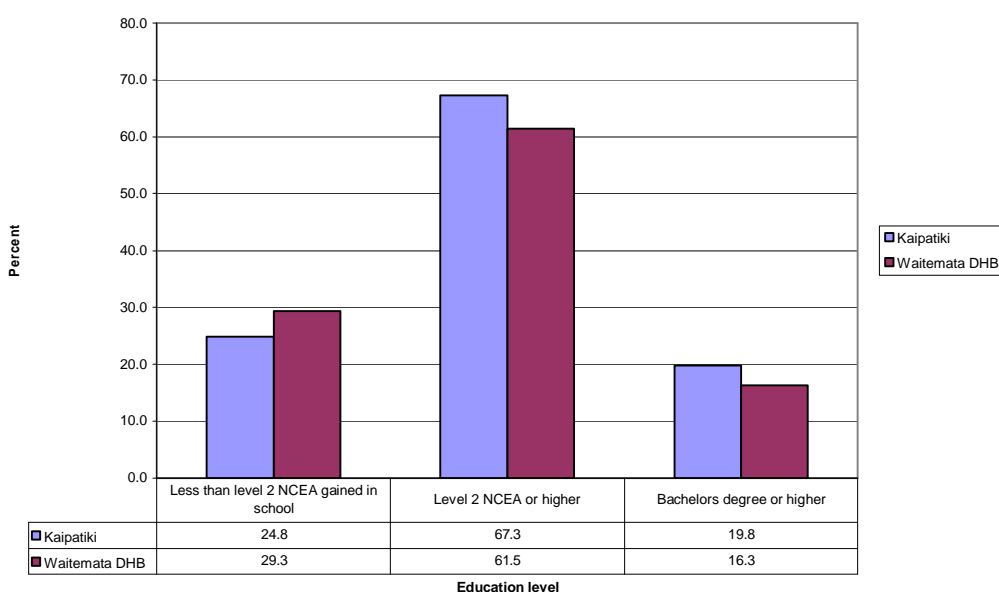
Source: Census 2006

10.2.5 Education

There are 27 schools in the Kaipatiki local board, all of which are state schools. Only four of the schools were rated as decile four or less.⁸

Almost 25% of the Kaipatiki population aged 15 years or over have not attained at least an NCEA level 2 or equivalent qualification, compared to 29.3% of the entire Waitemata DHB population (fig 10.7). Almost twenty percent of the population aged 15 years or over have attained a bachelors degree or higher, compared to 16.3% of the Waitemata DHB population in this age group.

Fig 10.7 Education level, Kaipatiki 2006

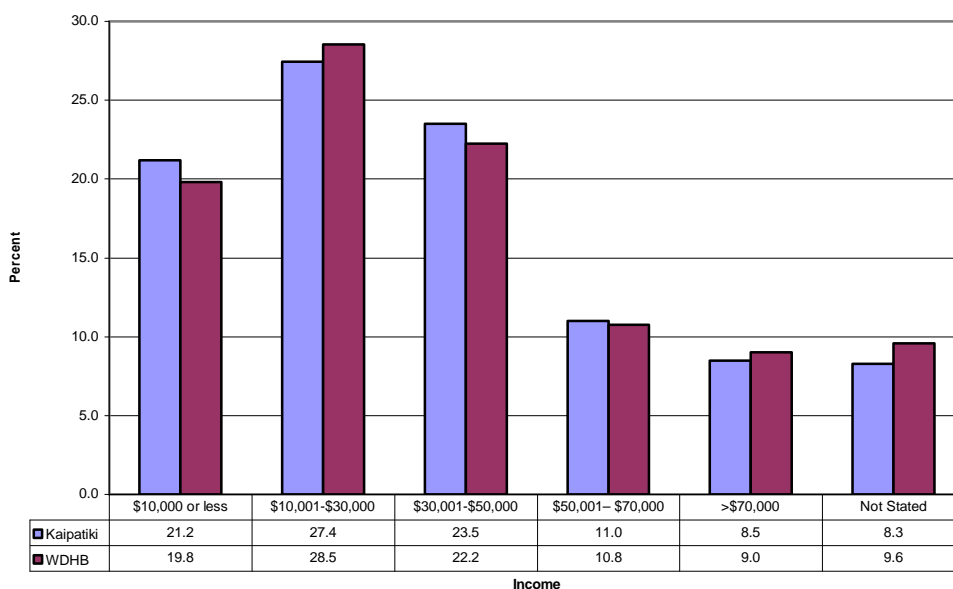


Source: Census 2006

10.2.6 Income

The median personal income of Kaipatiki local board was \$27,730. Approximately forty eight percent of the Kaipatiki population 15 years or over had a personal income of less than \$30,000 (fig 10.8).

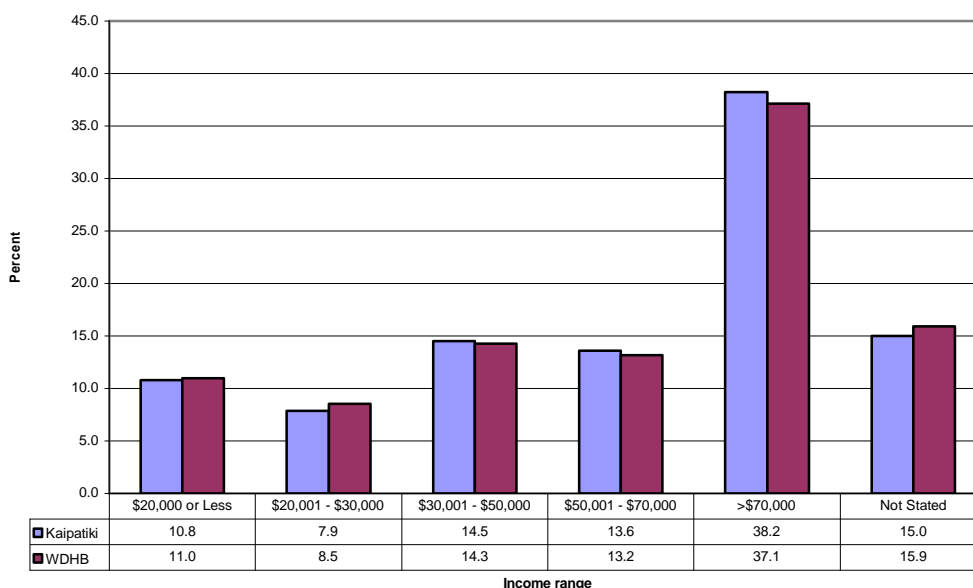
Fig 10.8 Personal income, Kaipatiki local board 2006



Source: Census 2006

The median household income of Kaipatiki ward was \$64,083. Approximately 18% of Kaipatiki households had a household income of less than \$30,000 (fig 10.9).

Fig 10.9 Household income, Kaipatiki local board 2006

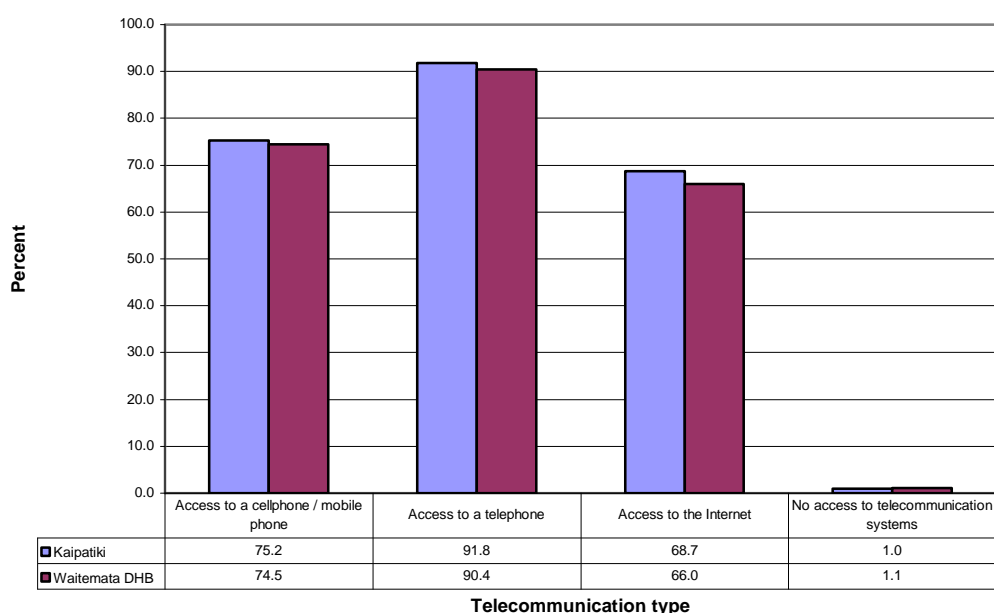


Source: Census 2006

10.2.7 Access to telecommunications

One percent of the Kaipatiki population have no access to telecommunication systems (fig 10.10). Greater than 90% of this population have access to a telephone, and 68% access to the internet.

Fgi 10.10 Access to telecommunications, Kaipatiki local board 2006

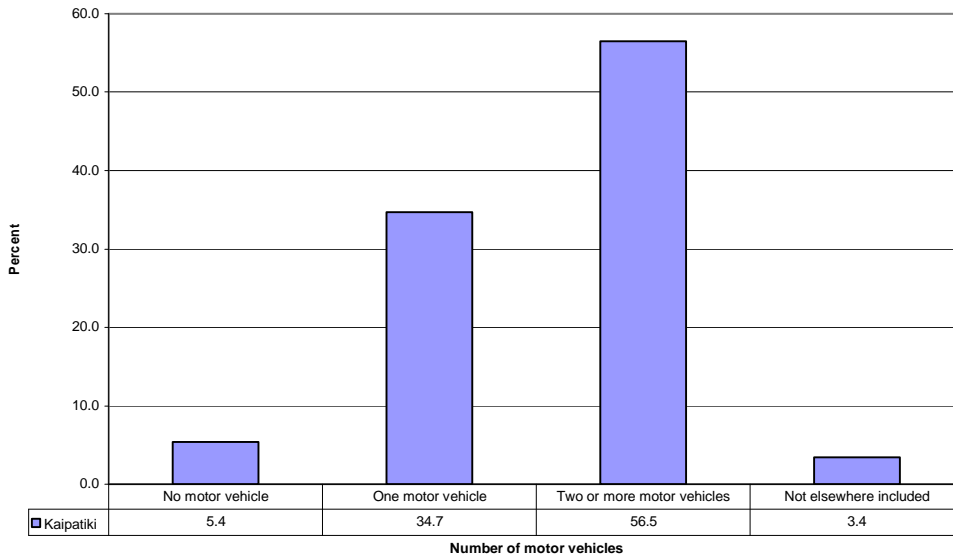


Source: Census 2006

10.2.8 Number of motor vehicles

Approximately five percent of Kaipatiki households do not own a motor vehicle, while 56% of households have two or more motor vehicles (fig 10.11). A comparison with other local boards is shown in table 17.9.

Fig 10.11 Number of motor vehicles per household, Kaipatiki local board 2006

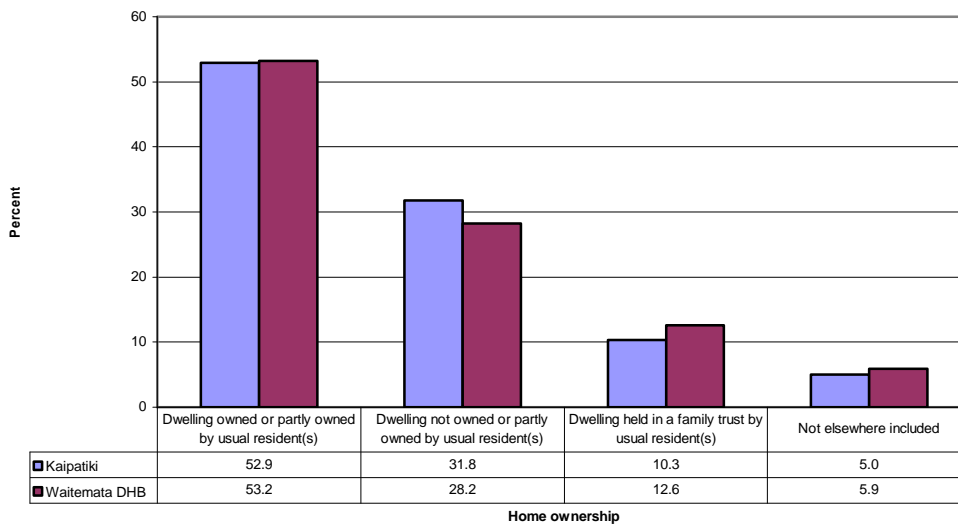


Not elsewhere included category includes not stated and response not identified
 Source: Census 2006

10.2.9 Home ownership

There is a lower rate of home ownership (including homes being held in a family trust) in the Kaipatiki local board than in the entire Waitemata DHB (fig 10.12). Consequently there is a higher proportion of people renting houses in Kaipatiki. Approximately 32% of Kaipatiki houses are not owned by the usual residents, compared to 28% of houses throughout Waitemata DHB.

Fig 10.12 Home ownership, Kaipatiki local board 2006



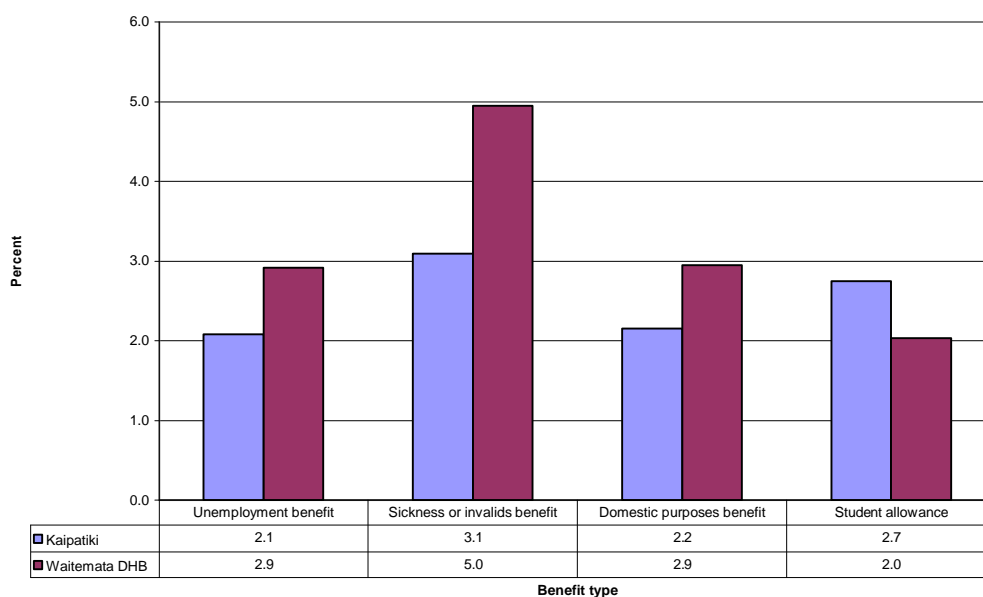
Not elsewhere included category includes not stated and response not identified
 Source: Census 2006

10.2.11 Benefit type

Approximately two percent of the Kaipatiki population age 15 years or over receive the unemployment benefit and 3.1% receive the sickness or invalids benefits, figures slightly lower than those for all Waitemata DHB residents within this age range (fig 10.13). Fifty four percent of Kaipatiki residents 15 years of age or over were in full time employment in 2006, and a further 14% in part-time employment.

Employment in Kaipatiki grew by 13% from the year 2000 to 2009, compared to 20% across the entire Auckland region. The greatest growth in jobs was in the retail sector.⁸

Fig 10.13 Percentage of the population aged 15 years or over on a benefit, Kaipatiki local board 2006

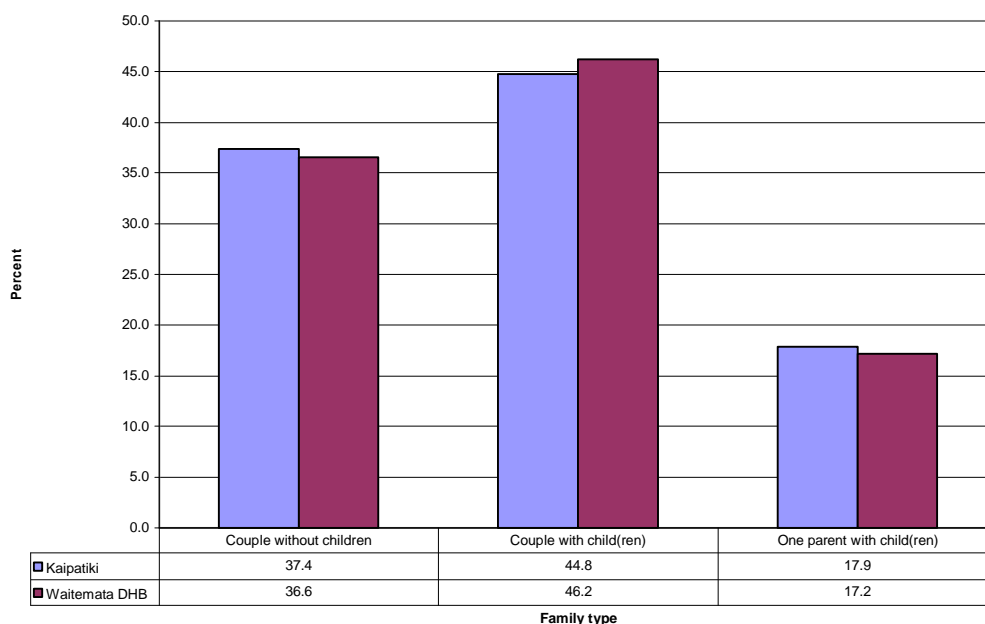


Source: Census 2006

10.2.12 Family composition

Single parent families make up 17.9% of Kaipatiki families compared to 17.2% of families across the Waitemata district (fig 10.14).

Fig 10.14 Family type, Kaipatiki local board 2006



Source: Census 2006

10.3 Health determinants

10.3.1 Smoking

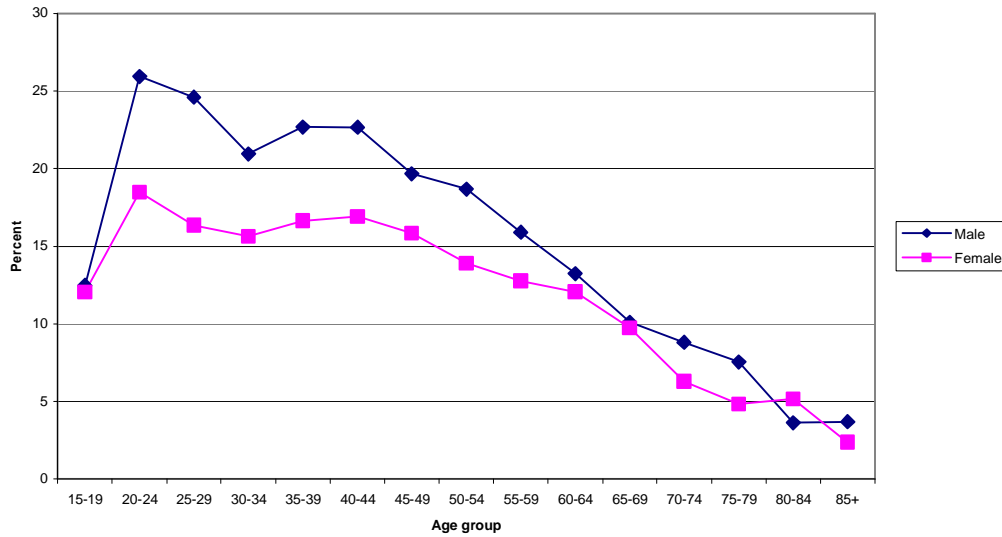
There were 10,506 smokers, aged 15 years or over, in the Kaipatiki local board in 2006, 16.5% of the board population in this age group. The age standardised smoking rate at that time was 165.6 per 1,000 people per year (table 10.3). The rate was higher in males than females. The proportion of the population that smoked peaked in the 20 to 24 year age group and then declined with increasing age (fig 10.15).

Table 10.3 Age standardised smoking status by gender, Kaipatiki 2006

	Male (per 1000 people per year)	Female (per 1000 people per year)	Total (per 1000 people per year)
Smoker	188.5	143.8	165.6
Previous smoker	199.5	163.9	180.2

Source: Statistics New Zealand

Fig 10.15 Proportion of adults who smoke by age group and gender, Kaipatiki local board 2006

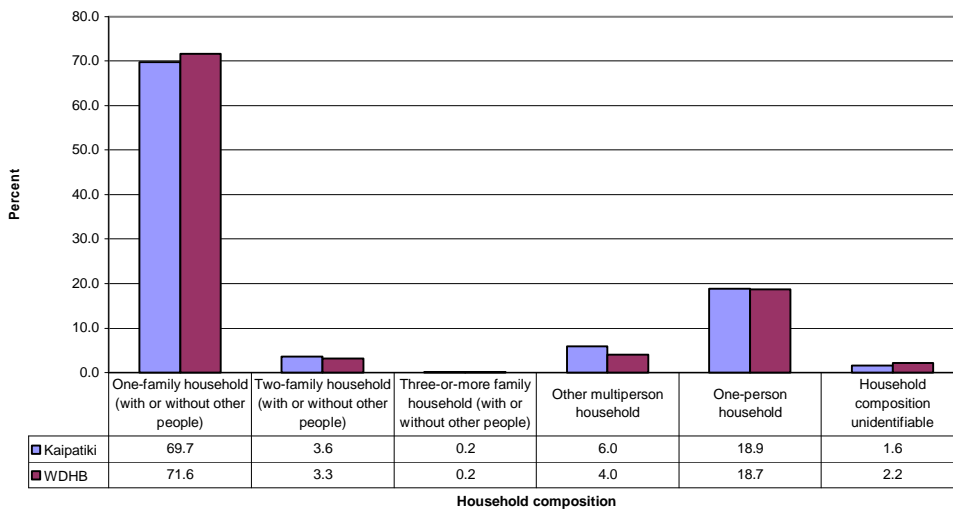


Source: Statistics New Zealand

10.3.2 Household composition

Two or more families shared the same house in 3.8% of households in the Kaipatiki local board in 2006, compared to 3.5% of households throughout Waitemata DHB (fig 10.16). One person households made up 18.9% of households in the Kaipatiki ward.

Fig 10.16 Household composition, Kaipatiki local board 2006



Source: Census 2006

10.4 Health Need

10.4.1 Births

There were 1,238 live births in the Kaipatiki local board during the 2009/2010 year. The birth rate over this period for women aged 15 to 49 years was 55.2 live births per 1,000 women

There were 47 live births to teenagers aged 15 to 19 years in the Kaipatiki local board during the 2009/2010 year. The birth rate in this age group was 16.1 per 1,000 females per year.

10.4.2 Deaths

There were 384 deaths in the Kaipatiki ward during 2009/2010, 14% of all Waitemata DHB deaths. The age standardised death rate was 36.9 per 10,000 people. The age standardised death rate for all of Waitemata DHB was 38.6 deaths per 10,000 people per year. Age specific death rates are given in table 10.4.

Table 10.4 Deaths by age group, Kaipatiki 2009/2010

Age group	Number of deaths	Age group specific rate (per 10000 people per year)
0-4	6	11.4
5-19	4	2.5
20-64	78	15.6
65+	296	390.6

Source: Statistics New Zealand

10.4.3 Acute hospitalisations

There were 10,061 acute hospitalisations for Kaipatiki local board residents, 15.2% of all acute admissions within Waitemata DHB. The age standardised admission rate was 118.6 per 1,000 people per year, lower than that of the entire district (table 10.5).

Table 10.5 Age standardised acute hospitalisation rate, Kaipatiki 2009/2010

	Age standardised rate (per 1000 people per year)	95% CI
Kaipatiki	118.6	116.2-120.9
WDHB	127.1	126.1-128.1

Source: NMDS

Table 10.6 Acute hospitalisations by age group, Kaipatiki 2009/2010

Age group	Kaipatiki		WDHB	
	Number	Rate (per 1000 people per year)	Number	Rate (per 1000 people per year)
0-4	510	97.2	3769	114.6
5-19	862	53.3	5893	54.7
20-44	3676	112.4	21271	121.7
45-64	2075	118.9	13916	122.7
65+	3045	401.8	21981	415.0

Source: NMDS

10.4.4 Ambulatory Sensitive Hospitalisations

There were 1,306 ASH admissions for Kaipatiki local board residents in 2009/2010, with an age standardised ASH admission rate of 17.1 per 1000 people per year (table 10.7). ASH admissions of Kaipatiki residents made up 14.9% of all ASH admissions in Waitemata DHB.

Table 10.7 Age standardised ASH rate, Kaipatiki 2009/2010

	ASH Number	Age standardised rate (per 1000 people)
Kaipatiki	1306	17.1
WDHB	8760	18.8

Source: NMDS

10.4.5 Low birth weight

There were 97 births classified as low birth weight in the Kaipatiki local board during the 2009/2010 year. The low birth weight rate in Kaipatiki was 69.1 per 1,000 live births during this time period. There low birth weight rate was similar for all local boards within the Waitemata DHB (fig 17.24).

10.4.6 Acute mental health

Eighty seven distinct Kaipatiki residents aged 15 years or over, had a hospital admission for a mental health condition in 2009/2010. The age standardised hospitalisation rate was 97.8 per 100,000 people, not significantly different from that of all Waitemata DHB residents (table 10.8). The highest age group specific hospitalisation rate was in the 65 and over age group (table 10.9).

Table 10.8 Age standardised mental health hospitalisation rate, Kaipatiki 2009/2010

	Age standardised hospitalisation rate(per 100000 people per year)	95% CI
Kaipatiki	97.8	77.1-118.5
WDHB	114.9	105.3-124.4

Source: Waitemata DHB

Table 10.9 Mental health hospitalisations by age group, Kaipatiki 2009/2010

Age group	Kaipatiki		WDHB	
	Number	Rate (per 100000 people per year)	Number	Rate (per 100000 people per year)
15-19	2	34.2	23	63.7
20-44	41	125.4	314	179.7
45-64	27	154.7	156	137.5
65+	17	224.3	80	168.0

Source: Waitemata DHB

10.5 Health service utilisation

10.5.1 Mental Health

There were 1,223 distinct residents of the Kaipatiki local board that were seen in mental health outpatient clinics in the 2009/2010 year (fig 10.10). The age standardised rate of outpatient clinic utilisation was lower for Kaipatiki residents than for all Waitemata DHB residents.

Table 10.10 Mental health outpatient utilisation by unique individuals, Kaipatiki 2009/2010

	Number	ASR (per 1000 people per year)	95% CI
Kaipatiki	1223	14.3	13.5-15.1
WDHB	8921	17.5	17.1 – 17.8

Source: Waitemata DHB

10.5.2 Emergency department utilisation

There were 17,567 visits to the emergency department by distinct Kaipatiki residents in 2009/2010, 16.6% of all Waitemata DHB emergency department visits. The age standardised utilisation rate of the emergency department visits was significantly higher than that of for the entire Waitemata DHB population and the third highest of all local boards within the DHB (table 10.11 and fig 17.30).

Table 10.11 Emergency department utilisation by unique individuals, Kaipatiki 2009/2010

	Number	ASR (per 1000 people per year)	95% CI
Kaipatiki	17567	221.4	218.0-224.7
WDHB	105894	214.7	213.6-215.9

Source: NNPAC

10.5.3 Pharmaceuticals

There were 601,557 pharmaceutical scripts used by Kaipatiki local board residents in 2009/2010. The age standardised rate of script utilisation was slightly lower for Kaipatiki residents than for all residents of Waitemata DHB (fig 10.12).

Table 10.12 Pharmaceutical script utilisation, Kaipatiki 2009/2010

	ASR (per person per year)	95% CI
Kaipatiki	7.07	7.05-7.09
WDHB	7.12	7.11-7.13

Source: Pharmaceutical Collection

10.5.4 NASC

There were 652 NASC assessments in the Kaipatiki local board in 2009/2010. All but 15 of these assessments were for people aged 65 years or over. The age standardised NASC assessment rate was lower for Kaipatiki residents than for the entire Waitemata DHB population (table 10.13).

There were 72,292 hours of care provided in the Kaipatiki local board during this time period, accounting for 9.5% of all care hour provision within Waitemata DHB. The age standardised rate of care hour utilisation was lower in Kaipatiki local board than for all of the Waitemata DHB population (table 10.14).

Table 10.13 NASC assessment rate, Kaipatiki 2009/2010

	ASR (per 1000 people per year)	95% CI
Kaipatiki	6.0	5.6-6.5
WDHB	8.3	8.1 – 8.6

Source: Waitemata DHB

Table 10.14 Care hour utilisation, Kaipatiki 2009/2010

	ASR (per 1000 people per year)	95% CI
Kaipatiki	646.9	642.1-651.7
WDHB	965.2	963.0-967.4

Source: Waitemata DHB

10.5.5 Elective admissions

Kaipatiki residents had 3,211 elective hospital admissions during the 2009/2010 year (table 10.15). The age standardised elective admission rate was 38.2 per 1,000 people for this time period.

Table 10.15 Elective admissions, Kaipatiki 2009/2010

	Number	ASR (per 1000 people per year)	95% CI
Kaipatiki	3211	38.2	36.8-39.5
WDHB	22376	40.9	40.3-41.4

Source: NMDS

10.6 Specific health needs

The most common 10 diagnoses for potentially avoidable hospitalisations of Kaipatiki residents are given in table 10.16. The conditions are similar for all local boards and the top three conditions are the same for all boards. All 10 of the most common conditions for potentially avoidable hospitalisations in the Kaipatiki local board are the same as those for the DHB district population.

Table 10.16 Most common potentially avoidable hospitalisation diagnoses, Kaipatiki 2009/2010

Kaipatiki	Percentage of all conditions	WDHB	Percentage of all conditions
IHD/Angina/chest pain	23.6	IHD/angina/chest pain	24.1
Respiratory infections	11.8	Respiratory infections	12.4
Cellulitis	8.6	Cellulitis	8.6
ENT infections	5.5	ENT infections	6.0
CORD	5.1	Asthma	4.9
Kidney/urinary tract infection	4.4	Dental conditions	4.6
Asthma	4.3	CORD	4.4
Dental conditions	4.2	Kidney/urinary infection	4.2
Ruptured appendix	4.0	Ruptured appendix	3.3
Gastroenteritis	2.9	Gastroenteritis	2.7

Source: NMDS

10.7 Service volumes

The volumes of distinct patients seen in outpatient clinics from Kaipatiki local board over the 2009/2010 year are shown in table 10.17.

Table 10.17 Community service volumes for unique individuals, Kaipatiki 2009/2010

Service type – Kaipatiki	Patient volumes	
	Initial appointment	Subsequent appointments
Adult services		
Cardiology Outpatients	645	1211
Diabetes Outpatients	233	544
General Medical Outpatients	469	757
General Surgical Outpatients	635	1880
Paediatric services		
General paediatric outpatients	556	457
Paediatric cardiology outpatients	39	132
Paediatric neurology outpatients	31	227
Paediatric endocrinology outpatients	27	178
Paediatric respiratory outpatients	8	80
Paediatric oncology outpatients	11	440
Total Paediatrics outpatients	672	1514
Older Adult services		All appointments
Health of Older Adult Services outpatients	345	
District Nursing Referrals	816	
Mental Health outpatients		
0 – 19 age group	219	
20 – 64 age group	763	
65+ age group	241	
Total	1223	

Source: NNPAC and Waitemata DHB

10.8 Health services

10.8.1 General practitioner

There were 46 GPs working within the Kaipatiki local board during the period 1 October to 31 December 2009, equivalent to 58 GPs per 100,000 population. This compares to 65 GPs per 100,000 population across the entire Waitemata DHB at that time. There are 17 GP practices within the Kaipatiki Local Board. Between 40% and 50% of Kaipatiki residents live within one kilometre of a GP premise.

Fifty seven percent of the Kaipatiki population were enrolled with a GP practice within their own local board at the end of 2009.

10.8.2 Aged care residences

There are 10 aged care residential facilities in the Kaipatiki local board. Between 80% and 90% of the Kaipatiki population live within two kilometres of an age care residence. These facilities provide a total of 303 rest home beds, 200 hospital care beds and 58 dementia care beds (table 10.18).

Table 10.18 Aged care bed numbers, Kaipatiki 2010

Bed type	Number of beds	Beds per 1000 residents aged 65 years and over
Rest home bed	303	40.0
Hospital care bed	200	26.4
Dementia care bed	58	7.7

Source: Ministry of Health 2010 certified facilities database, and Eldernet

10.8.3 Birthing units

Kaipatiki local board does not have a birthing unit

10.8.4 After Hours GP services

There is one after hours GP practice in the Kaipatiki local board, providing a twelve hour service (table 10.19).

Table 10.19 After hours GP practices, Kaipatiki 2010

After hours GP practice	Hours open
Whitecross Glenfield	8am to 8pm, 7 days a week

Source: Waitemata DHB

10.8.5 Hospitals and Hospices

There is one hospital in the Kaipatiki local board.

Southern Cross Hospital North Harbour is a private hospital which provides surgical services. The hospital has 59 beds and six operating theatres.

10.8.6 DHB community services

Mental health services

There are no mental health services based within the Kaipatiki local board.

Surgical outpatient services

There are no surgical outpatient services based within the Kaipatiki local board.

Paediatric services

Paediatric outpatient clinics are held in Birkdale, which is situated within the Kaipatiki local board. No other paediatric services are based within the Kaipatiki local board, however public health nurses, based within the Devonport-Takapuna local board, work within the community and schools within Kaipatiki

Table 10.20 List of schools in which Waitemata DHB public health nurses have a presence, Kaipatiki 2009/2010

Schools
Beach Haven Primary
Birkenhead Primary
Birkenhead College
Browns Bay Primary
St Mary's Primary
Verran Primary
Hato Tetera College
Sunnybrae Primary
Northcote Intermediate
Northcote College
Onepoto School
Glenfield Primary
Manuka Primary
Wairau Valley Special School
Bayview Primary
Glenfield College
Windy Ridge Primary
Kauri Park School
Glenfield Intermediate
Northcote Primary
Birkdale North Primary
Chelsea Primary
Marlborough Primary
Target Road Primary
Willow Park Primary
Marist Learning Centre

Source: Waitemata DHB

Older people's health services

No services for older people are based within the Kaipatiki local board.

Diabetes services

A satellite diabetes outpatient clinic is held in Birkdale, which is located within the Kaipatiki local board. The clinic is held one day per month and is nurse and dietician led.

Medical outpatient clinics

There are no medical outpatient clinics within the Kaipatiki local board.