

## 13.0 Henderson-Massey

### 13.1 Introduction

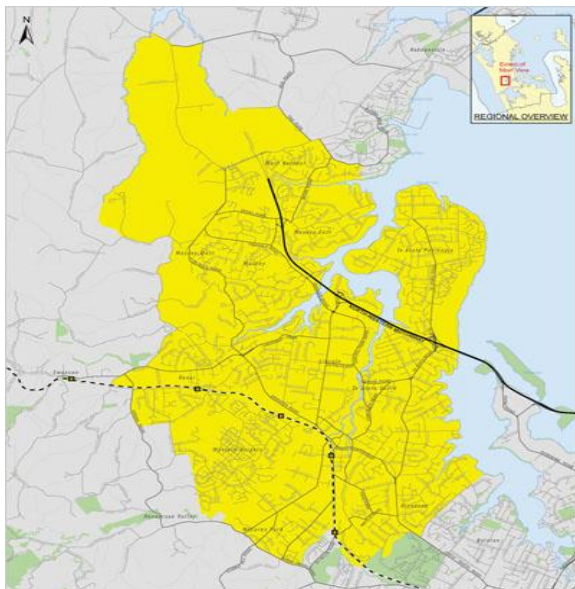
The Henderson-Massey Local board is one of two boards which together make up the Waitakere ward. It is bounded to the east by Waitemata Harbour and to the West by the Waitakere Ranges. It includes the suburbs of West Harbour, Massey, Henderson, Te Atatu Peninsula, Te Atatu South, Ranui, Western Heights, McLaren Park, Sunnyvale and Glendene. While primarily urban in nature it includes some semi-rural living in the north of the area.

The Henderson-Massey local board includes the large Massey/Westgate shopping centre. The Henderson town centre has an integrated bus and train centre. There are commercial and light industrial areas located centrally within the local board. The northwestern edge of the Local Board is undergoing development, with extension of the urban limit expected to lead to increased commercial and industrial activity and more jobs. The north-western motorway within this board is being extended so that it will link with the new four lane motorway from Westgate to Albany, improving access to the board.

The Opunuku and Oratia streams flow through Henderson providing recreational and environmental benefits to the region.

Waitakere Hospital is located within the Henderson-Massey local board.

**Fig 13.1 Map of Henderson-Massey local board**



Source: Auckland Council

## 13.2 Population and social characteristics

### 13.2.1 Population

The Henderson-Massey local board had a usually resident population of 98,688 in 2006, 68.4% of the Waitakere ward population and 20.5% of the entire Waitemata DHB population. There were a greater number of females than males in all age groups except those under 15 years of age. There were a slightly higher proportion of people under 15 years of age within Henderson-Massey than within the DHB, and a slightly lower proportion aged 65 years or over (table 13.1).

**Table 13.1 Henderson-Massey population by age group and gender, 2006**

Age Group	Henderson-Massey			Waitemata DHB		
	Female	Male	Total	Female	Male	Total
0-14	11796 (12.0)	12357 (12.5)	24153 (24.5)	51012 (10.6)	53541 (11.1)	104553 (21.7)
15-24	7335 (7.4)	7218 (7.3)	14553 (14.7)	33288 (6.9)	34419 (7.1)	67707 (14.1)
25-44	16083 (16.3)	14472 (14.7)	30555 (31.0)	75105 (15.6)	68004 (14.1)	143109 (29.7)
45-64	10488 (10.6)	9681 (9.8)	20169 (20.4)	58323 (12.1)	54969 (11.4)	113295 (23.5)
65-74	2814 (2.9)	2418 (2.5)	5232 (5.3)	14880 (3.1)	13665 (2.8)	28545 (5.9)
75+	2367 (2.4)	1659 (1.7)	4026 (4.1)	14556 (3.0)	9846 (2.0)	24402 (5.1)
Total	50883 (51.6)	47805 (48.4)	98688 (100)	247167 (51.3)	234447 (48.7)	481611 (100)

Source: Census 2006

### 13.2.2 Population trends

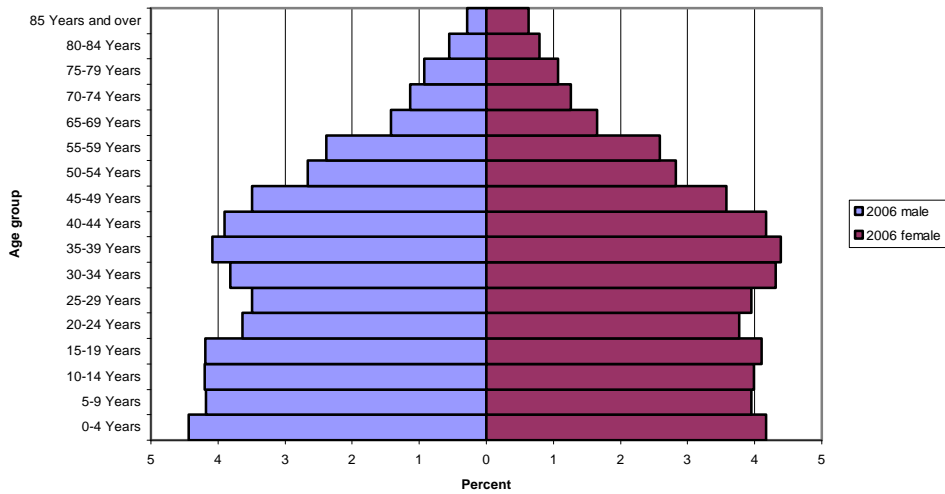
The Henderson-Massey local board population is projected to increase by 38.3% from 2006 to 2031 a much smaller percentage increase than that projected for the entire Waitemata DHB. The greatest increase is projected to occur in the 65 years and over age group, resulting in an overall aging of the population (table 13.2).

**Table 13.2 Population projections, Henderson-Massey**

Age	2006	2011	2016	2021	2026	2031	Percentage increase 2006 to 2031
0-14	23,848	25,704	27,213	28,328	28,319	28,760	20.6
15-64	65,888	72,235	75,820	79,303	82,850	85,532	29.8
65+	9,273	10,999	13,338	15,733	19,014	22,600	143.7
Total	99,008	108,938	116,371	123,364	130,183	136,892	38.3

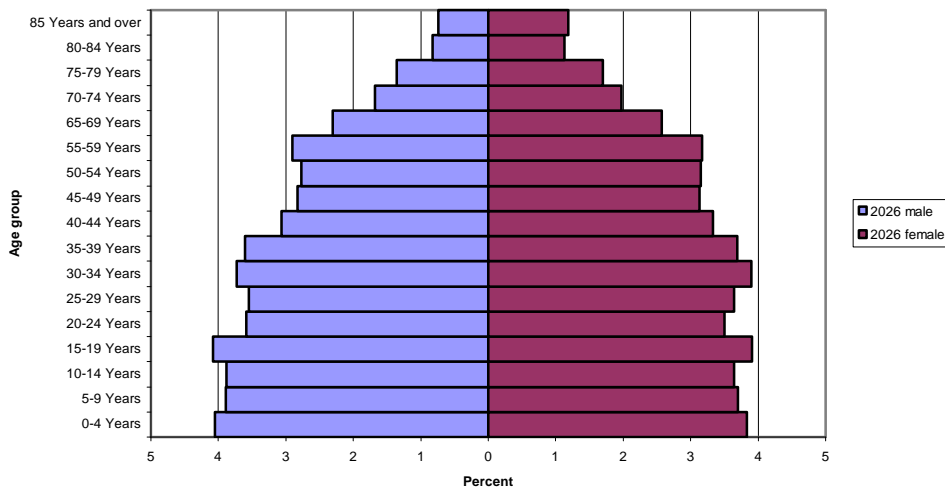
Source: Statistics New Zealand, population projections

**Fig 13.2 Henderson-Massey population pyramid, 2006**



Source: Statistics New Zealand, census 2006

**Fig 13.3 Henderson Massey population projection, 2026**

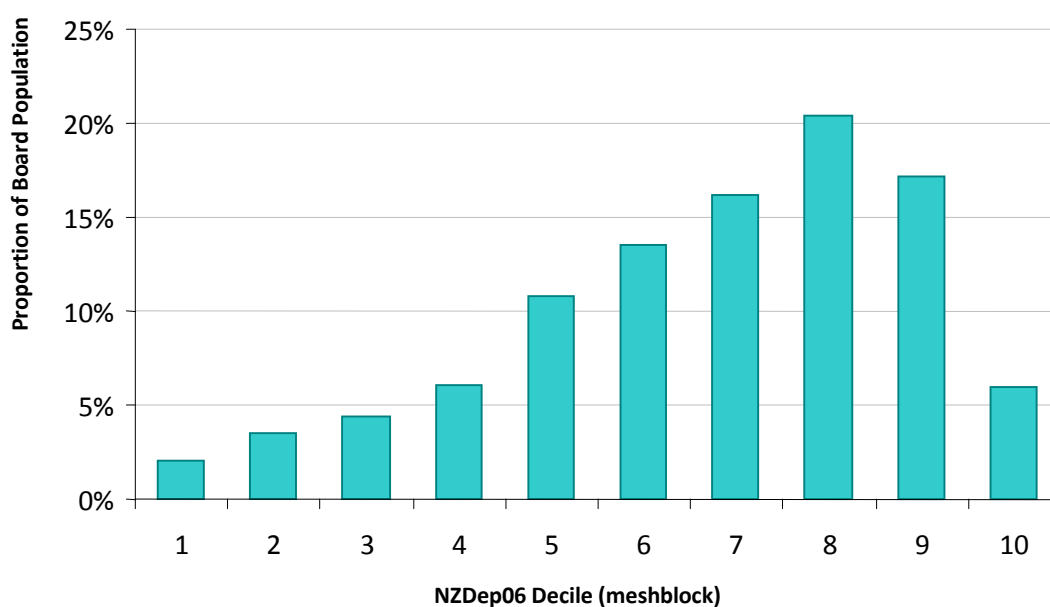


Source: Statistics New Zealand, population projections

### 13.2.3 Socio-economic deprivation

Henderson-Massey local board has a high proportion of its population living in areas of high deprivation, NZDep06 areas seven to nine (fig 13.4). This is in contrast to the entire Waitemata DHB population, which has a higher proportion living within areas of low socio-economic deprivation.

Fig 13.4 Henderson-Massey deprivation profile, 2006



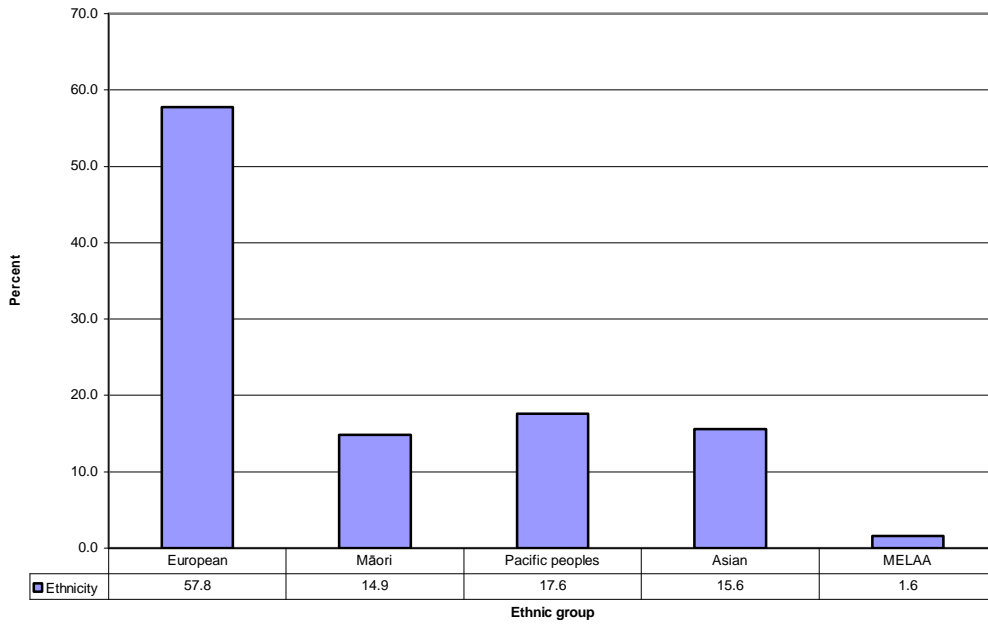
Source: Statistics New Zealand, usually resident population 2006

### 13.2.4 Ethnicity

Europeans made up 57.8%, Maori 14.9%, Pacific people 17.6% and Asian 15.6% of the Henderson-Massey population in 2006 (fig 13.5). This represents a lower percentage of Europeans and a higher percentage of Maori and Pacific people than within the population throughout the Waitemata DHB region.

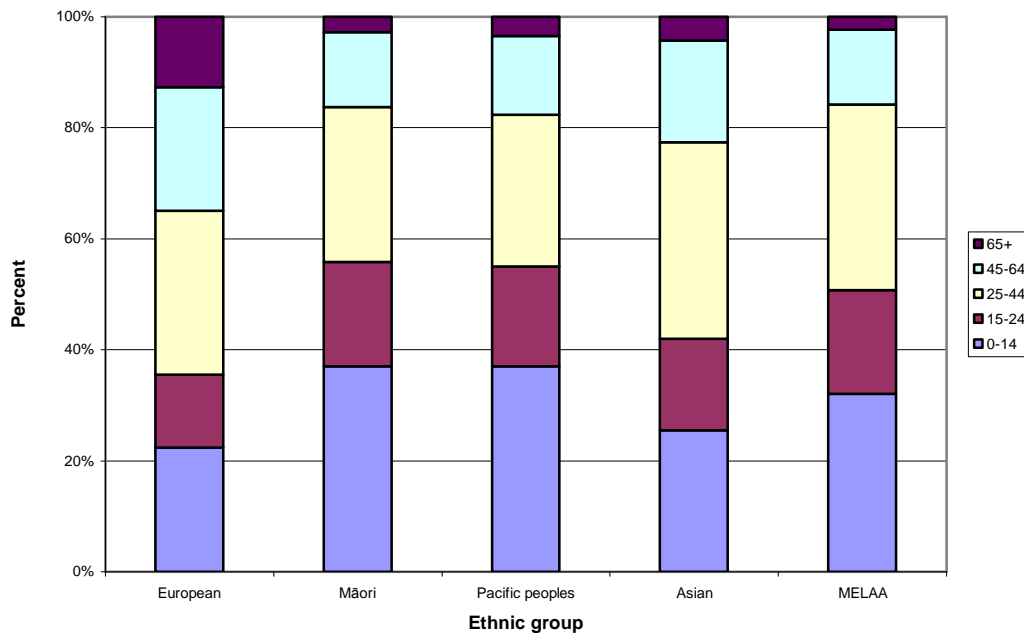
The European population within the Henderson Massey local board has a larger percentage of people in older age groups and a smaller percentage in young age groups than either the Maori or Pacific populations (fig 13.6).

**Fig 13.5 Ethnic group, Henderson-Massey local board 2006**



Source: Census 2006

**Fig 13.6 Ethnic group by age structure, Henderson-Massey local board 2006**



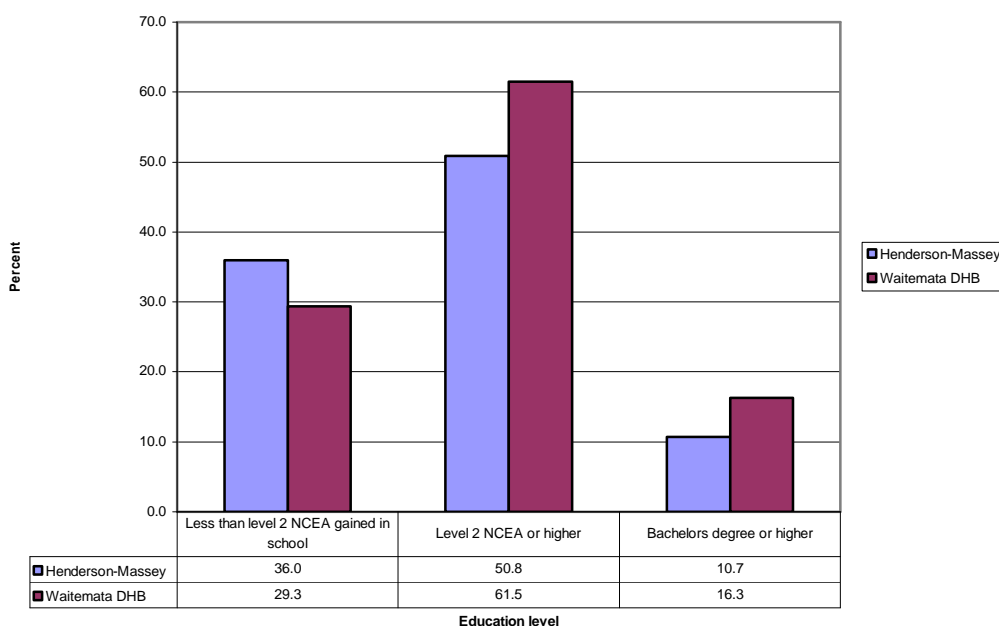
Source: Census 2006

### 13.2.5 Education

There are 41 schools in the Henderson-Massey local board, including three private schools. The school decile ratings vary between decile 1 and decile 8.<sup>8</sup>

Thirty six percent of the Henderson-Massey population aged 15 years or over have not attained an NCEA level 2 or equivalent qualification (fig 13.9). Henderson-Massey has the highest proportion of its population not attaining this qualification compared to all other Waitemata DHB local boards (fig 17.8). Approximately 10% of the population have attained a bachelors degree or higher qualification.

Fig 13.7 Education level, Henderson-Massey 2006



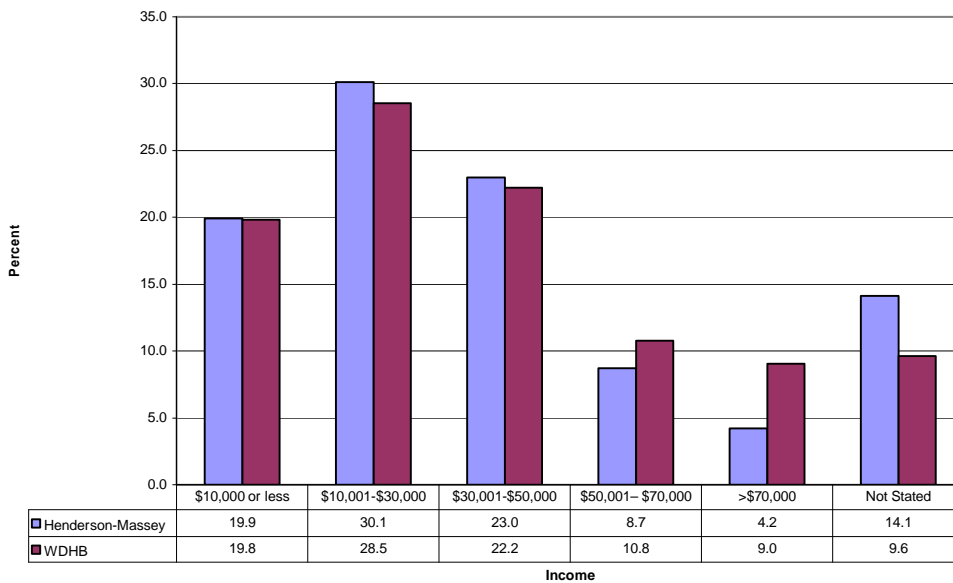
Source: Census 2006

### 13.2.6 Income

The median personal income of the Henderson-Massey local board residents was \$24,826 in 2006. Only Whau ward within the Waitemata DHB district had a lower median income (table 17.9). Fifty percent of the Henderson-Massey population aged over 15 years of age have an income of less than \$30,000 (fig 13.8). This is a higher proportion than for all other local boards and wards with the exception of Whau (table 17.7). Four percent of this population have an income of over \$70,000 compared to nine percent of the Waitemata DHB population in this age range (fig 13.8).

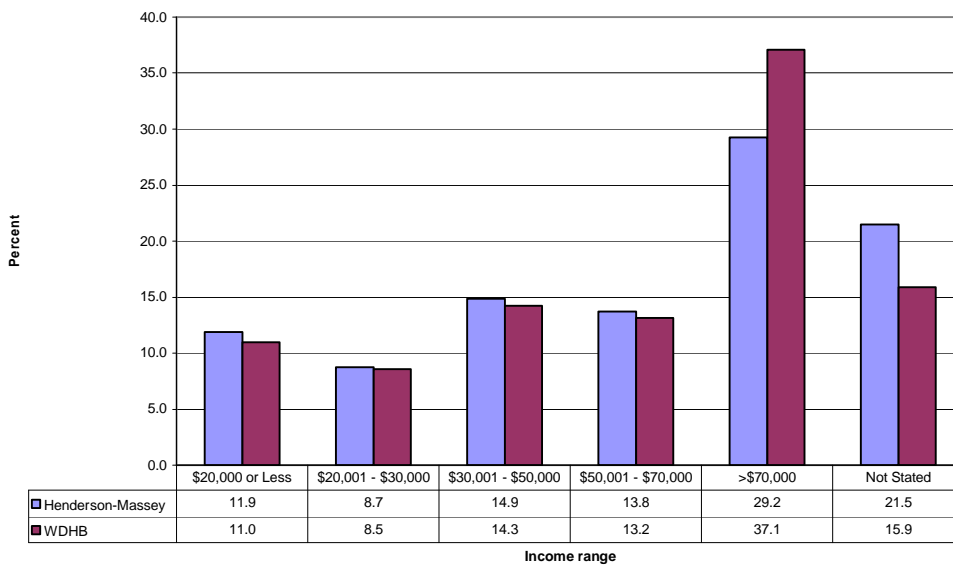
The median household income of the residents of Henderson-Massey local board was \$55,733 in 2006. Twenty percent of households in this board have an income of less than \$30,000 (fig 13.9). Twenty nine percent of households had an income of greater than \$70,000, compared to 37% of households in the entire Waitemata DHB district.

**Fig 13.8 Personal income, Henderson-Massey local board 2006**



Source: Census 2006

**Fig 13.9 Household income, Henderson-Massey local board 2006**

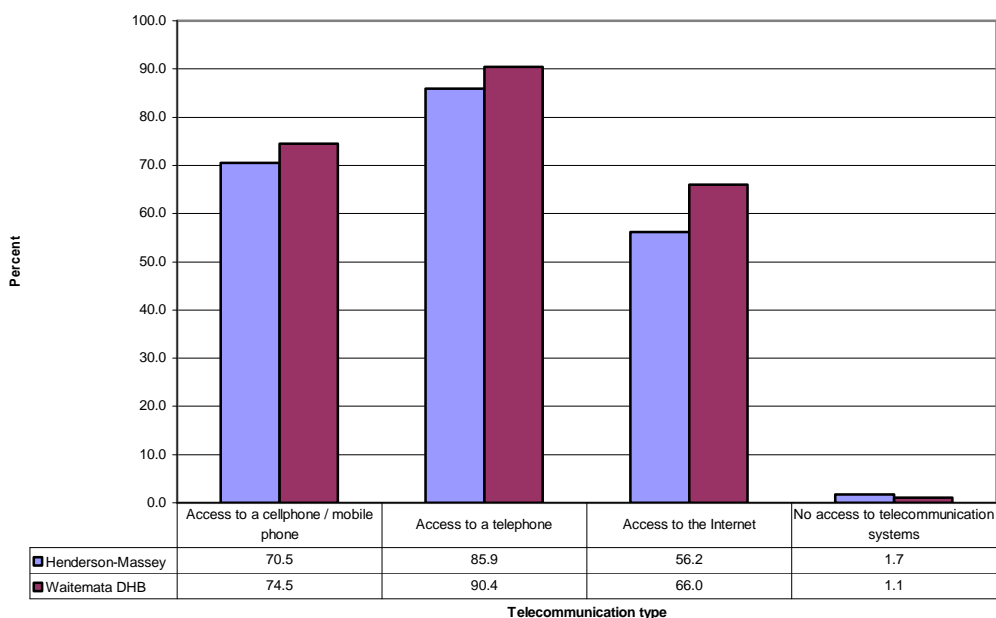


Source: Census 2006

### 13.2.7 Access to telecommunications

There were 1.7% of Henderson-Massey households that had no access to telecommunications systems in 2006, a slightly higher proportion than that of the entire Waitemata DHB population (fig 13.10). Almost 86% of households had access to a telephone, but only 56% of households had access to the internet at that time.

**Fig 13.10 Access to telecommunications, Henderson-Massey local board 2006**



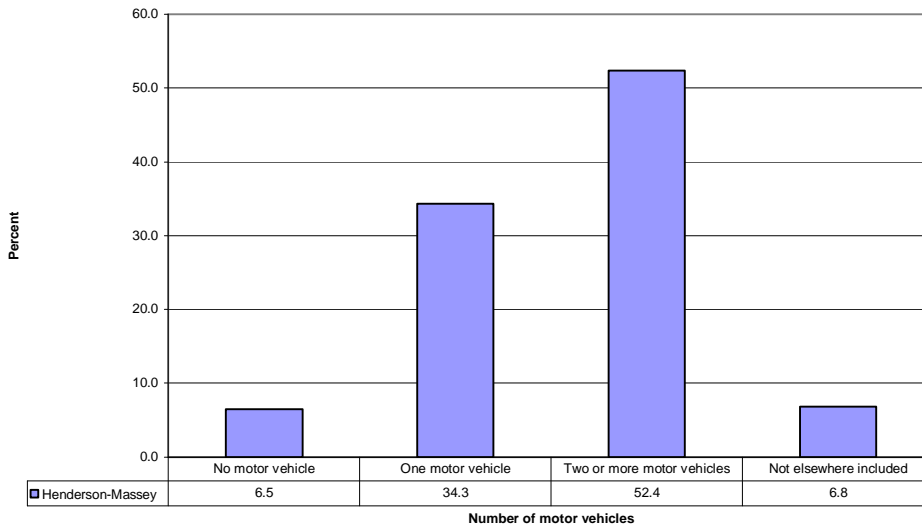
Source: Census 2006

### 13.2.8 Number of motor vehicles

Approximately six percent of households within the Henderson-Massey local board did not have ownership of a motor vehicle in 2006 (fig 13.11). These households are likely to experience transport difficulty. Approximately 52% of households had ownership of two or more motor vehicles in 2006.



**Fig 13.11 Number of motor vehicles per household, Henderson-Massey local board 2006**

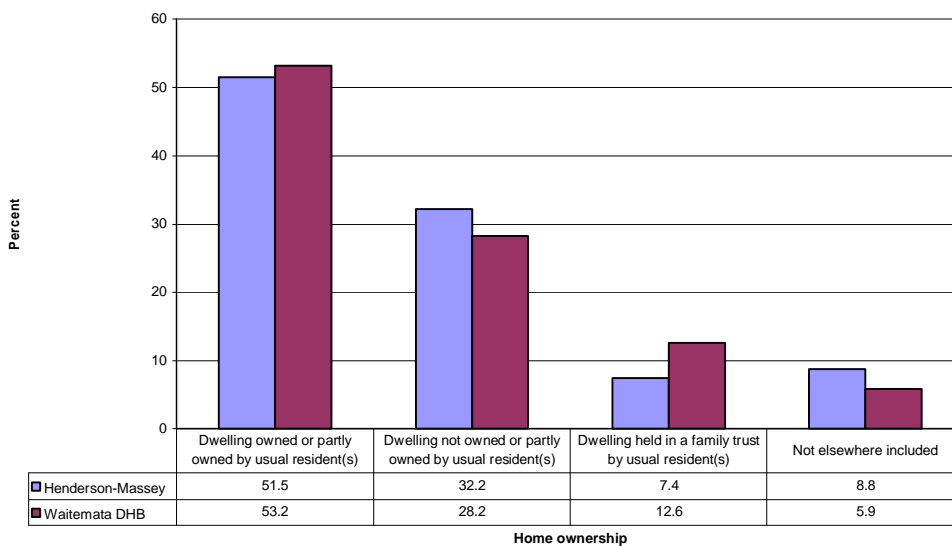


Not elsewhere delivered category includes not stated and response not identifiable  
Source: Census 2006

### 13.2.9 Home ownership

The home ownership rate in the Henderson-Massey local board is slightly lower than that of the entire DHB. Approximately 60% of dwellings within Henderson-Massey are owned by the usual residents or held within a family trust, compared to approximately 66% of all dwellings within Waitemata DHB (fig 13.12).

**Fig 13.12 Home ownership, Henderson-Massey local board 2006**



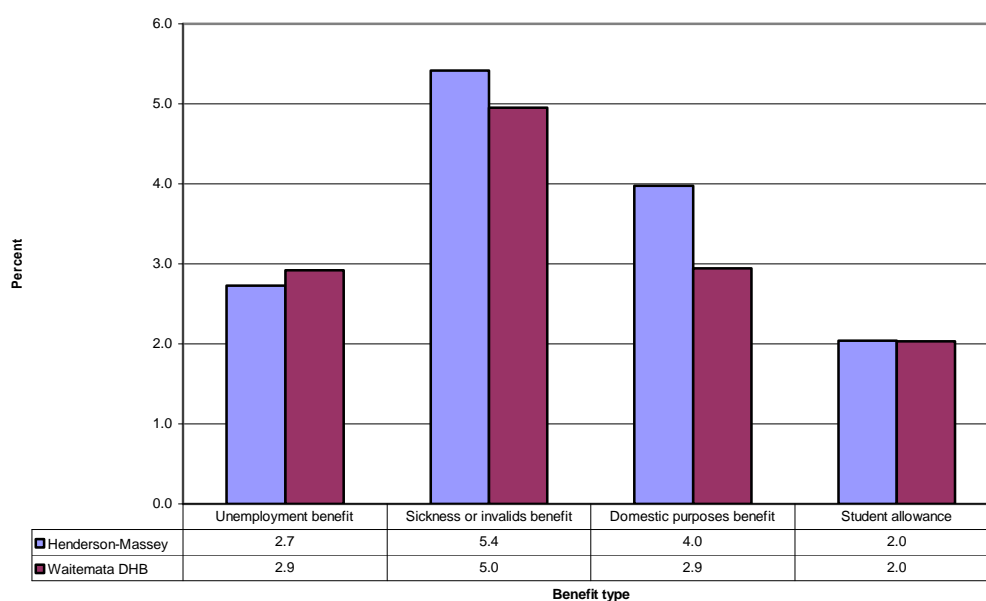
Not elsewhere delivered category includes not stated and response not identifiable  
Source: Census 2006

### 13.2.10 Benefit type

Fifty one percent of Henderson-Massey local board residents aged 15 years or over were in full time employment in 2006, with a further 13% employed part time. Employment in Henderson-Massey increased by 25% between 2000 and 2009 compared to a 20% employment increase across the entire Auckland region. There was employment growth across all sectors, particularly healthcare and the social assistance sectors.<sup>8</sup>

A similar proportion of the working age population in Henderson-Massey and within the entire DHB received the unemployment benefit in 2006 (fig 13.13). Four percent of the Henderson-Massey population 15 years or over received the domestic purposes benefit, compared to 2.9% of the Waitemata DHB population.

**Fig 13.13 Percentage of population 15 years or over on a benefit, Henderson-Massey local board 2006**

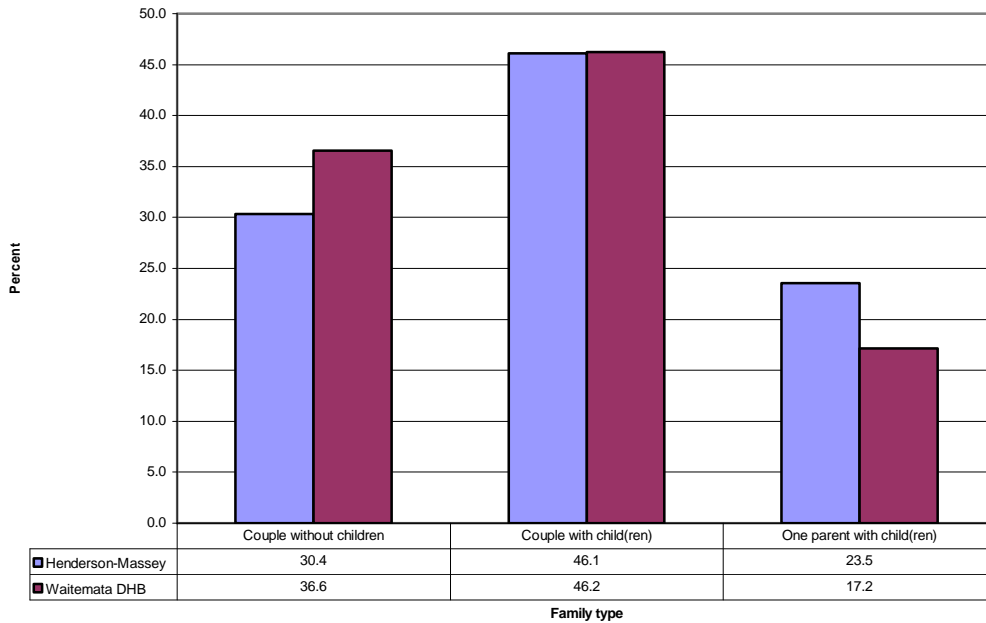


Source: Census 2006

### 13.2.11 Family composition

Single parent families make up 23.5% of all families within the Henderson-Massey local board (fig 13.14), a higher proportion than that of families in all other local boards within Waitemata DHB (fig 17.14). There is a lower proportion of families without children in the Henderson-Massey local board than in all of the Waitemata DHB.

Fig 13.14 Family type, Henderson-Massey local board, 2006



Source: Census 2006

### 13.3 Health determinants

#### 13.3.1 Smoking

There were 15,261 adult smokers in the Henderson-Massey local board in 2006, 20.5% of the ward population aged 15 years or over. Tobacco smokers within the Henderson-Massey local board accounted for 23.5% of all smokers throughout the Waitemata DHB. The age standardised smoking rate was 207.1 per 1,000 people per year (table 13.3). The rate was higher in males than females. The Henderson-Massey smoking rate was higher than that of all other local boards within the Waitemata DHB district in 2006 (table 17.10).

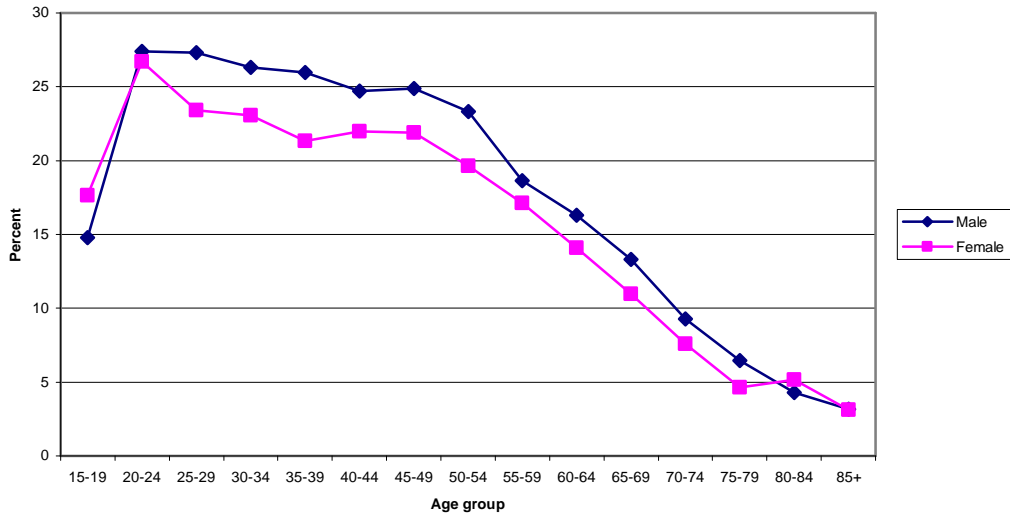
The proportion of the population that smoked tobacco peaked in the 20-24 age group and then declined with increasing age (fig 13.15).

**Table 13.3 Age standardised smoking status rate by gender, Henderson-Massey 2006**

	Male (per 1000 people per year)	Female (per 1000 people per year)	Total (per 1000 people per year)
Smoker	218.2	197.4	207.1
Previous smoker	178.8	149.6	162.4

Source: Statistics New Zealand

**Fig 13.15 Proportion of adults who smoke by age group and gender, Henderson-Massey local board 2006**

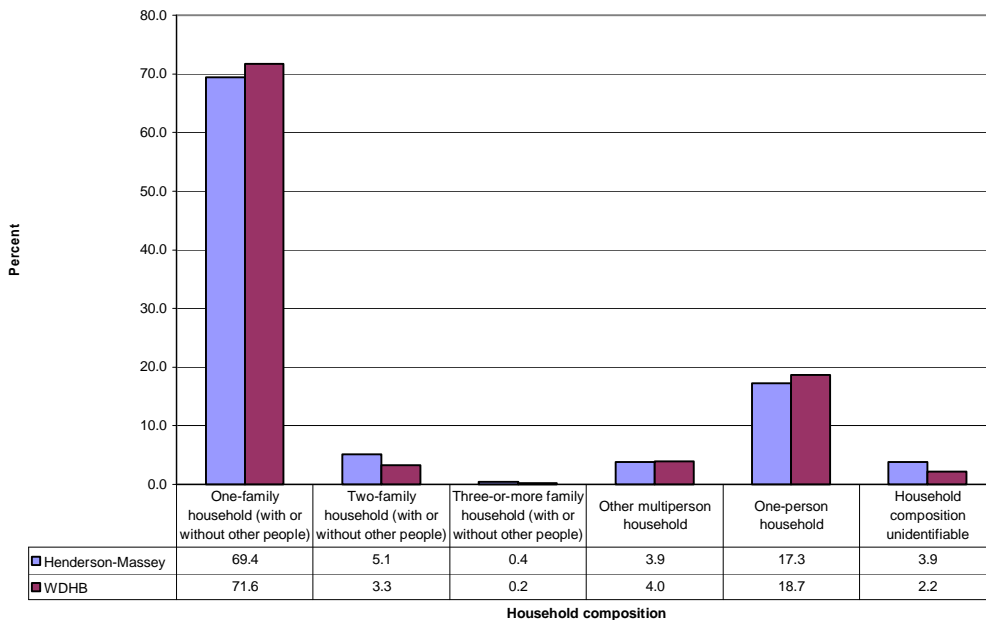


Source: Census 2006

### 13.3.2 Household composition

In 2006 5.5% of Henderson-Massey households included two or more families, suggesting overcrowding (fig 13.16). This proportion was higher than that of all Waitemata DHB households (3.5%).

**Fig 13.16 Household composition, Henderson-Massey local board 2006**



Source: Census 2006

## 13.4 Health need

### 13.4.1 Births

There were 1,834 live births in the Henderson-Massey local board during the 2009/2010 year. Births in the Henderson-Massey local board accounted for 25.3% of all births within the Waitemata DHB during this period. The birth rate for women aged 15 to 49 years was 68.2 live births per 1,000 women per year.

There were 182 births to teenagers in Henderson-Massey aged between 15 and 19 years in 2009/2010, making up 41% of births to teenagers in the Waitemata DHB. The birth rate for women in this age group was 47.2 per 1,000 females. This rate was significantly higher than that of all other local boards in Waitemata DHB.

### 13.4.2 Deaths

There were 551 deaths of Henderson-Massey residents during the 2009/2010 year, 20.3% of Waitemata DHB deaths during this period. The age standardised death rate was 47.2 per 10,000 people per year, high compared to the other local boards within the Waitemata DHB (fig 17.18). Age group specific death rates are shown in table 13.4.

**Table 13.4 Deaths by age group, Henderson-Massey 2009/2010**

Age group	Number of deaths	Age group specific rate (per 10000 people per year)
0-4	14	17.1
5-19	6	2.5
20-64	113	19.7
65+	418	451.5

Source: Statistics New Zealand

### 13.4.3 Acute hospitalisations

There were 17,124 acute hospitalisations of residents of the Henderson-Massey local board during 2009/2010, 25.6% of all acute hospitalisations in Waitemata DHB. The age standardised acute hospitalisation rate for this period was 168.5 per 1000 residents (table 13.5), the highest rate of all local boards within Waitemata DHB (fig 17.12). The acute hospitalisation rate was highest in the 65 year and older age group (table 13.6).

**Table 13.5 Age standardised acute hospitalisation rate, Henderson-Massey 2009/2010**

	Age standardised rate (per 1000 people per year)	95% CI
Henderson-Massey	168.5	166.0-171.1
WDHB	127.1	126.1-128.1

Source: NMDS

**Table 13.6 Acute hospitalisation by age group, Henderson-Massey 2009/2010**

Age group	Henderson-Massey		WDHB	
	Number	Rate (per 1000 people per year)	Number	Rate (per 1000 people per year)
0-4	1396	170.5	3769	114.6
5-19	1561	65.6	5893	54.7
20-44	5959	159.8	21271	121.7
45-64	3601	178.5	13916	122.7
65+	4607	497.6	21981	415.0

Source: NMDS

#### 13.4.4 Ambulatory Sensitive Hospitalisations

There were 2768 ASH admissions during the 2009/2010 year in the Henderson-Massey local board, 31.6% of all ASH admissions within Waitemata DHB during that year. The age standardised ASH rate was 29.1 per 1,000 people (table 13.7).

**Table 13.7 Age standardised ASH rate, Henderson-Massey 2009/2010**

	ASH Number	Age standardised rate (per 1000 people per year)
Henderson-Massey	2768	29.1
WDHB	8760	18.8

Source: NMDS

#### 13.4.5 Low birth weight

There were 138 births classified as low birth weight in the Henderson-Massey Local Board during the 2009/2010 year. The low birth weight rate in Henderson-Massey was 63.8 per 1000 live births during this time period. The low birth weight rate was similar for all local boards within the Waitemata DHB region.

### 13.4.6 Acute mental health

There were 141 Henderson-Massey residents hospitalised with a mental health condition in 2009/2010, 24.7% of all mental health admissions within Waitemata DHB. The age standardised hospitalisation rate was 141.4 per 100,000 people, (table 13.8). Age group specific hospitalisation rates were highest in the 20 to 44 and 65 year and over age groups (table 13.9).

**Table 13.8 Age standardised mental health hospitalisation rate, Henderson-Massey 2009/2010**

	Age standardised hospitalisation rate(per 100000 people per year)	95% CI
Henderson-Massey	141.4	117.7-165.0
WDHB	114.9	105.3-124.4

Source: Waitemata DHB

**Table 13.9 Mental health hospitalisations by age group, Henderson-Massey 2009/2010**

Age group	Henderson-Massey		WDHB	
	Number	Rate (rate per 100000 people per year)	Number	Rate (rate per 100000 people per year)
15-19	4	51.2	23	63.7
20-44	87	233.3	314	179.7
45-64	30	148.7	156	137.5
65+	20	216.0	80	168.0

Source: Waitemata DHB

## 13.5 Health service utilisation

### 13.5.1 Mental health

There were 1871 Henderson-Massey residents who utilised mental health outpatient services in the 2009/2010 year, 21% of all mental health outpatients throughout the Waitemata district. The age standardised rate of mental health outpatient clinic utilisation was 18.4 per 1,000 people per year, not significantly different from that of the entire Waitemata district (table 13.10).

**Table 13.10 Mental health outpatient utilisation by unique individuals, Henderson-Massey 2009/2010**

	Number	ASR (per 1000 people per year)	95% CI
Henderson-Massey	1871	18.4	17.6-19.3
WDHB	8921	17.5	17.1 – 17.8

Source: Waitemata DHB

### 13.5.2 Emergency department utilisation

There were 29,625 visits to the emergency department by distinct Henderson-Massey residents in the 2009/2010 year, 28% of all emergency department visits within Waitemata DHB. The age standardised rate of utilisation of the emergency department was significantly higher in Henderson-Massey than throughout the entire Waitemata DHB population (table 13.11).

**Table 13.11 Emergency department utilisation by unique individuals, Henderson-Massey 2009/2010**

	Number	ASR (per 1000 people per year)	95% CI
Henderson-Massey	29625	296.8	293.4-300.2
WDHB	105894	214.7	213.6-215.9

Source: NN PAC

### 13.5.3 Pharmaceuticals

There were 933,796 pharmaceutical scripts used by Henderson-Massey residents in the 2009/2010 year. The age standardised rate of script utilisation was 9.03 scripts per person, a higher rate than that of the entire Waitemata DHB (table 13.12). The rate was also higher than in any other local board within the Waitemata DHB district (fig 17.32).

**Table 13.12 Pharmaceutical script utilisation, Henderson-Massey 2009/2010**

	ASR (per person per year)	95% CI
Henderson-Massey	9.03	9.01-9.05
WDHB	7.12	7.11-7.13

Source: Pharmaceutical collection



### 13.5.4 NASC

There were 928 NASC assessments in the Henderson-Massey local board during the 2009/2010 year, accounting for 14.5% of NASC assessments in the Waitemata DHB. Just 31 of these assessments were for people aged less than 65 years of age. The age standardised rate of NASC assessments during this period was 7.6 per 1,000 people of all ages (table 13.13).

**Table 13.13 NASC assessment rate, Henderson-Massey 2009/2010**

	ASR (per 1000 people per year)	95% CI
Henderson-Massey	7.6	7.1-8.0
WDHB	8.3	8.1 – 8.6

Source: Waitemata DHB

There were 111,909 hours of care provided within Henderson-Massey local board during the 2009/2010 year, 14.6% of care hours provided throughout Waitemata DHB during this period. The age standardised rate of care hour provision was 897 hours per 1000 people per year (table 13.14), lower than the rate for the entire DHB.

**Table 13.14 Care hour utilisation, Henderson-Massey 2009/2010**

	ASR (per 1000 people per year)	95% CI
Henderson-Massey	897.0	891.8-902.3
WDHB	965.2	963.0-967.4

Source: Waitemata DHB

### 13.5.5 Elective admissions

There were 5,317 elective hospital admissions for residents of the Henderson-Massey local board during the 2009/2010 year, making up 23.8% of all elective admissions in the Waitemata DHB. The age standardised hospitalisation rate was 50.9 admissions per 1,000 people per year, higher than that of the entire Waitemata DHB population (table 13.15).

**Table 13.15 Elective admissions, Henderson-Massey 2009/2010**

	Number	ASR (per 1000 people)	95% CI
Henderson-Massey	5317	50.9	49.5-52.3
WDHB	22376	40.9	40.3-41.4

Source: NMDS

## 13.6 Specific health needs

The 10 most common diagnoses for potentially avoidable hospitalisations within the Henderson-Massey local board are shown in table 13.16. Ischaemic heart disease, respiratory infections and cellulitis were the three most common diagnoses for all local boards.

**Table 13.16 Most common potentially avoidable hospitalisation diagnoses, Henderson-Massey 2009/2010**

Henderson-Massey	Percentage of all conditions	WDHB	Percentage of all conditions
IHD/Angina/chest pain	23.2	IHD/angina/chest pain	24.1
Respiratory infections	13.4	Respiratory infections	12.4
Cellulitis	10.2	Cellulitis	8.6
ENT infections	6.8	ENT infections	6.0
Asthma	6.2	Asthma	4.9
CORD	5.3	Dental conditions	4.6
Dental conditions	5.0	CORD	4.4
Kidney/urinary tract infection	3.8	Kidney/urinary infection	4.2
Sexually transmitted disease	2.6	Ruptured appendix	3.3
Epilepsy	2.2	Gastroenteritis	2.7

Source: NMDS

## 13.7 Service volumes

The volumes of distinct patients from Henderson-Massey who were seen in outpatient clinics over the 2009/2010 year are given in table 13.17.

**Table 13.17 Community service volumes of unique individuals, Henderson-Massey 2009/2010**

Service type – Henderson-Massey	Patient volumes	
	Initial appointment	Subsequent appointments
<b>Adult services</b>		
Cardiology Outpatients	1367	2274
Diabetes Outpatients	376	760
General Medical Outpatients	743	1489
General Surgical Outpatients	985	2881
<b>Paediatric services</b>		
General paediatric outpatients	944	1080
Paediatric cardiology outpatients	68	246
Paediatric neurology outpatients	25	170
Paediatric endocrinology outpatients	18	244
Paediatric respiratory outpatients	11	71
Paediatric oncology outpatients	6	336
Total Paediatrics outpatients	1072	2147
<b>Older Adult services</b>	<b>All appointments</b>	
Health of Older Adult Services outpatients	317	
<b>District Nursing Referrals</b>	1284	
<b>Mental Health outpatients</b>		
0 – 19 age group	363	
20 – 64 age group	1242	
65+ age group	266	
Total	1871	

Source: NNPAC and Waitemata DHB

## 13.8 Health services

### 13.8.1 General practitioner

There were 67.5 full time equivalent GPs in the Henderson-Massey Local Board in the last three months of 2009. This is equivalent to 68 GPs per 100,000 people. In comparison there were 65 GPs per person in the entire Waitemata DHB region. There are 20 GP practices within the Henderson-Massey Local Board area. Between 40 and 50% of Henderson-Massey residents live within one kilometre of a GP practice.

Sixty nine percent of the Henderson-Massey population were enrolled with a GP practice within their own local board at the end of 2009.

### 13.8.2 Age care residences

There are 12 aged care residential facilities in the Henderson-Massey Local Board. Between 80% and 90% of the Henderson-Massey population live within two kilometres of an aged care residence. The facilities within the Henderson-Massey local board provide a total of 322 rest home beds, 239 hospital care beds and 52 dementia care beds (table 13.18).

**Table 13.18 Aged residential care bed numbers, Henderson-Massey 2010**

Bed type	Number of beds	Beds per 1000 residents aged 65 years and over
Rest home bed	322	33.8
Hospital care bed	239	25.1
Dementia care bed	52	5.5

Source: Ministry of Health 2010 certified facilities database and Eldernet

### 13.8.3 Birthing units

Waitakere hospital is situated in Henderson-Massey Local Board. It includes a birthing unit with eight birthing beds (figure 13.19).

**Table 13.19 Birthing unit bed numbers, Henderson-Massey 2010**

<b>Bed type</b>	<b>Number</b>
Birthing	8
Postnatal	29
Antenatal assessment	0
Total	37

Source: Waitemata DHB

#### **13.8.4 After hours GP services**

There are two after hours GP services within the Henderson-Massey Local Board (table 13.20). One of these is open 24 hours a day, In addition to this there is an emergency department at Waitakere Hospital which is open from 8am until 10pm, seven days a week, and which provides 24 hour paediatrics services.

**Table 13.20 After hours GP practices, Henderson-Massey 2010**

<b>After hours GP practice</b>	<b>Hours open</b>
Westgate Medical Centre	8am to 8pm Monday to Friday 9am to 6pm Saturday and Sunday
Whitecross Westcare	24 hours a day, 7 days a week

Source: Waitemata DHB

#### **13.8.5 Hospitals and Hospices**

Henderson-Massey local board has one hospital. The Waitakere hospital is a publicly funded hospital.

There are no hospices which include inpatient beds within the Henderson-Massey local board. Hospice West Auckland provides community hospice services.

#### **13.8.6 DHB community services**

##### **Mental health services**

A wide range of mental health services are based within the Henderson-Massey local board. These services are presented in table 13.21.

**Table 13.21 DHB community mental health services, Henderson-Massey 2010**

<b>Mental health service</b>	<b>Location</b>
Adult mental health services	Paramount Drive, Henderson
Marinoto West child and youth team	Paramount Drive, Henderson
Mental health services for older adults	Waitakere Hospital, Henderson
Early Psychosis Intervention team	Paramount Drive, Henderson
Maternal Mental Health Service	Waitakere Hospital, Henderson
Whitiki Maurea	Paramount Drive, Henderson
Takanga a Fohe	Paramount Drive, Henderson
CADS West	Trading Place, Henderson

Source: Waitemata DHB

### **Surgical outpatient services**

A range of surgical outpatient clinics are held in the Waitakere Hospital, located within the Henderson-Massey Local Board.

### **Paediatric services**

Paediatric outpatient clinics are held at the Waitakere Hospital and on the Te Atatu Peninsula, both sites being located within the Henderson-Massey local board. Public health nurses are based at the Waitakere Hospital. A child development service is located at the Child Health Unit, also located at the Waitakere Hospital.

**Table 13.22 Paediatric community services, Henderson-Massey 2010**

<b>Paediatric community service</b>	<b>Location</b>
Paediatric outpatient clinic	Te Atatu Peninsula Waitakere Hospital, Henderson
Public Health Nurse	Waitakere Hospital
Child development service	Child Health Unit, Waitakere Hospital
Home care 4 kids	Waitakere Hospital

Source: Waitemata DHB

**Table 13.23 List of schools in which WDHB public health nurses have a presence, Henderson-Massey 2010**

School
Henderson Intermediate
Henderson High
Lincoln Heights Primary
Sunnyvale Primary
Western Heights Primary
Massey High
Rangeview Intermediate
Don Buck Primary
Royal Road School
West Harbour Primary
St Paul's Primary
Matipo School
Peninsula Primary
Rutherford Primary
Te Atatu Intermediate
Westbridge Residential School
Holy Cross School
Arohanui Special Needs School
Glendene Primary
Henderson Primary
Tiromoana
West City Christian College
Kelston Girls
Edmonton Primary
Flanshaw Road School
Massey Primary
Pomaria Road School
Rutherford College
Colwill Primary
Western Heights Primary
Bruce McLaren Intermediate
Liston College
Waitakere College
St Dominic's College
Henderson South Primary
Summerland Primary
Birdwood Primary
Jireh Christian School
Henderson North Primary
Ranui Primary
Nga Kakano Christian Bilingual School
Te Kura Kaupapa Maori O Te Kootuku
Sunderland College
Seventh Day Adventist School
Tu Tangata

Source: Waitemata DHB

### **Health services for older people**

Geriatrician outpatient clinics are held at Waitakere Hospital several days a week (table 13.24). NASC staff, district nursing staff and community allied health staff are based at the

Waitakere Hospital, all of whom will work within the community (tables 13.24 and 13.25).  
 District nursing is available seven days a week, from 8.00 am until 9.30 pm.

**Table 13.24 Health services for older people, Henderson-Massey 2010**

<b>Health service</b>	<b>Location</b>
NASC	Waitakere Hospital
Geriatrician Tuesdays - 2 consultant and 1 registrar clinic Wednesday - 1 consultant and 2 registrar clinics Thursday - 1 consultant, 1 registrar and gerontology nurse clinics	Waitakere Hospital
District nursing - 18.83 FTE (actual and budgeted)	Waitakere Hospital

Source: Waitemata DHB

**Table 13.25 Community allied health services, Henderson-Massey local board 2010**

<b>Community Allied Health Services</b>	<b>Location</b>
- Occupational therapist - Physiotherapist - Dietician - Speech language therapist - Gerontology nurses	Waitakere Hospital

Source: Waitemata DHB



## Diabetes services

Diabetes outpatient clinics are held at Waitakere Hospital. Satellite clinics are held in Te Atatu two days a month. The satellite clinics are nurse and dietician led.

**Table 13.26 Diabetes outpatient services, Henderson-Massey 2010**

<b>Diabetes Health Service</b>	<b>Location</b>
Diabetes outpatient clinic	Waitakere Hospital
Diabetes satellite clinic	Te Atatu

Source: Waitemata DHB

## Medical outpatient clinics

Some medical outpatient clinics are held at the Waitakere Hospital.