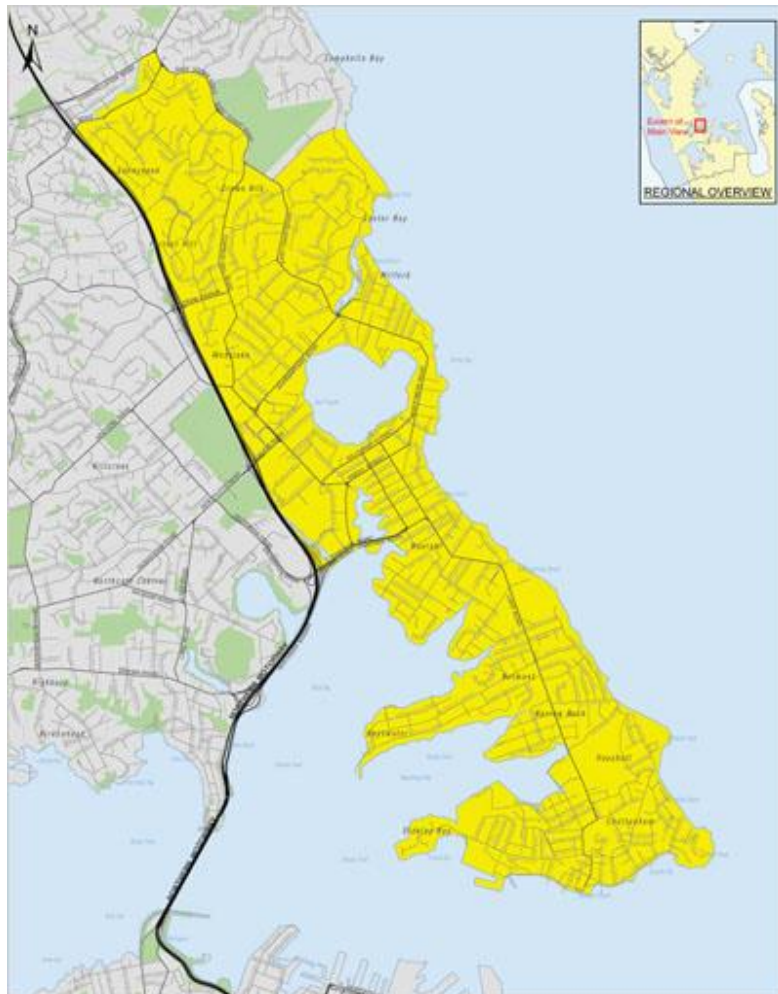


## 9.0 Devonport-Takapuna

### 9.1 Introduction

The Devonport-Takapuna local board is part of the North Shore ward. It extends from Sunnynook and Castor Bay in the north to Devonport in the south. State Highway 1 forms its western boundary and its eastern boundary is formed by the coast. All of the Devonport-Takapuna local board is classified as an urban area. North Shore Hospital is situated within the Devonport-Takapuna local board. Connection to Auckland central business district is made across Waitemata Harbour by the Harbour Bridge or ferries from both Devonport and Bayswater.

**Fig 9.1 Map of Devonport-Takapuna local board**



Source: Auckland Council

## 9.2 Social characteristics

### 9.2.1 Population

There were 52,659 people usually resident in the Devonport-Takapuna local board in 2006. The Devonport-Takapuna population made up 40% of the North Shore ward population and 10.9% of the Waitemata DHB population. The proportion of the population under 15 years of age was slightly lower than that of the entire DHB population, while the proportion aged 65 years and over was slightly higher than that of the DHB population (table 9.1).

**Table 9.1 Devonport-Takapuna population by age group and gender, 2006**

Age Group	Devonport-Takapuna			Waitemata DHB		
	Female	Male	Total	Female	Male	Total
0-14	4635 (8.8)	5103 (9.7)	9738 (18.5)	51012 (10.6)	53541 (11.1)	104553 (21.7)
15-24	3702 (7.0)	3918 (7.4)	7620 (14.5)	33288 (6.9)	34419 (7.1)	67707 (14.1)
25-44	7905 (15.0)	6849 (13.0)	14754 (28.0)	75105 (15.6)	68004 (14.1)	143109 (29.7)
45-64	6939 (13.2)	6336 (12.0)	13275 (25.2)	58323 (12.1)	54969 (11.4)	113295 (23.5)
65-74	1797 (3.4)	1572 (3.0)	3369 (6.4)	14880 (3.1)	13665 (2.8)	28545 (5.9)
75+	2508 (4.8)	1395 (2.6)	3903 (7.4)	14556 (3.0)	9846 (2.0)	24402 (5.1)
Total	27486 (52.2)	25173 (47.8)	52659 (100)	247167 (51.3)	234447 (48.7)	481611 (100)

Source: Census 2006

### 9.2.2. Population trends

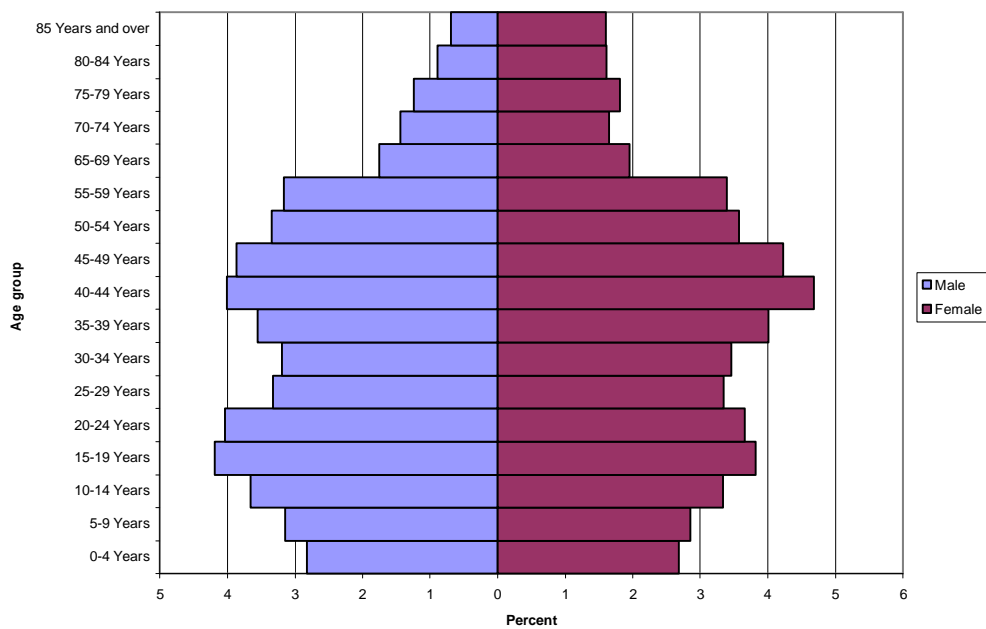
The population within Devonport-Takapuna local board is projected to increase by 25.6% from the year 2006 to 2031. Over this period the 65 year and over population is projected to increase by 100%, 10 times that of the under 15 year population (table 9.2).

**Table 9.2 Population projections, Devonport-Takapuna**

Age	2006	2011	2016	2021	2026	2031	Percentage increase 2006 to 2031
0-14	9634	9875	10155	10413	10499	10634	10.4
15-64	36550	38101	39136	40320	41449	42116	15.2
65 +	7070	7818	9347	10680	12300	14144	100.0
Total	53254	55793	58639	61412	64247	66894	25.6

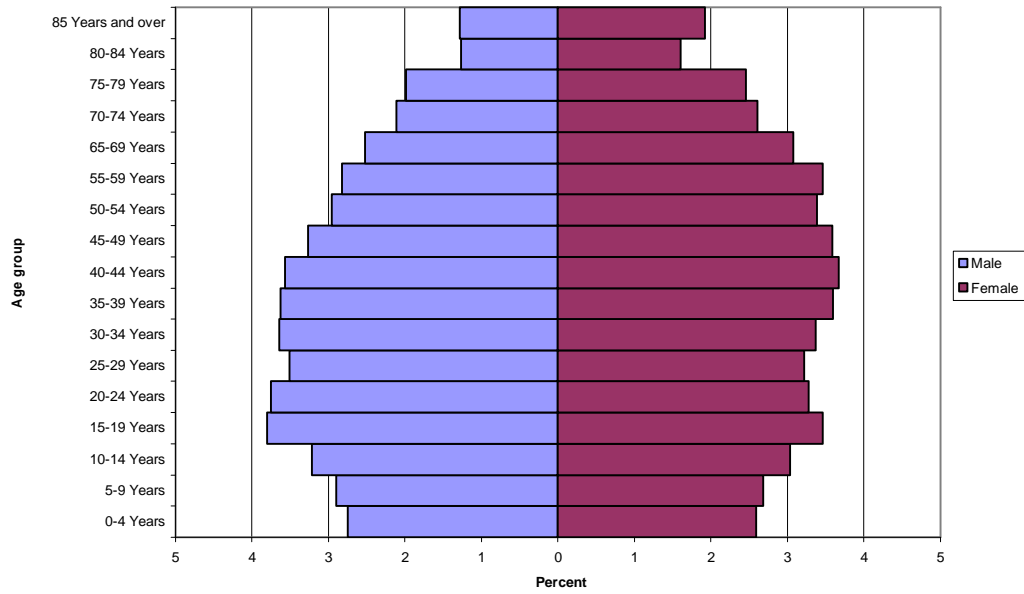
Source: Statistics New Zealand population projections

**Fig 9.2 Devonport-Takapuna population pyramid, 2006**



Source: Statistics New Zealand, Census 2006

**Fig 9.3 Devonport-Takapuna population projection, 2026**

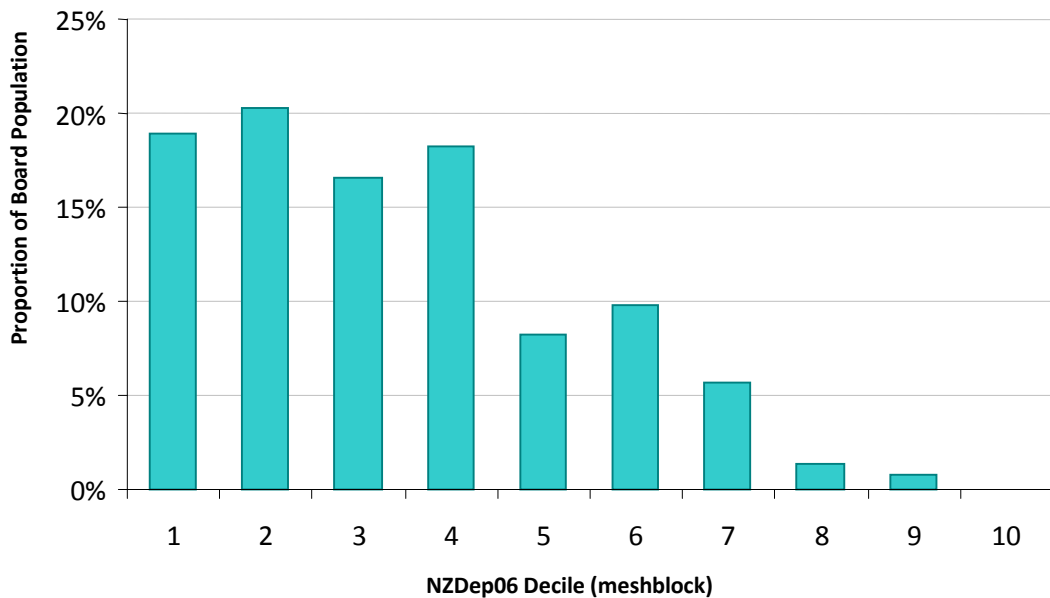


Source: Statistics New Zealand, Population projections

### 9.2.3 Deprivation

A high proportion of the Devonport-Takapuna population live in areas with NZDep06 decile of 1 to 4 (fig 9.4). The proportion of people living in areas of high deprivation is low.

**Fig 9.4 Devonport-Takapuna deprivation profile , 2006**



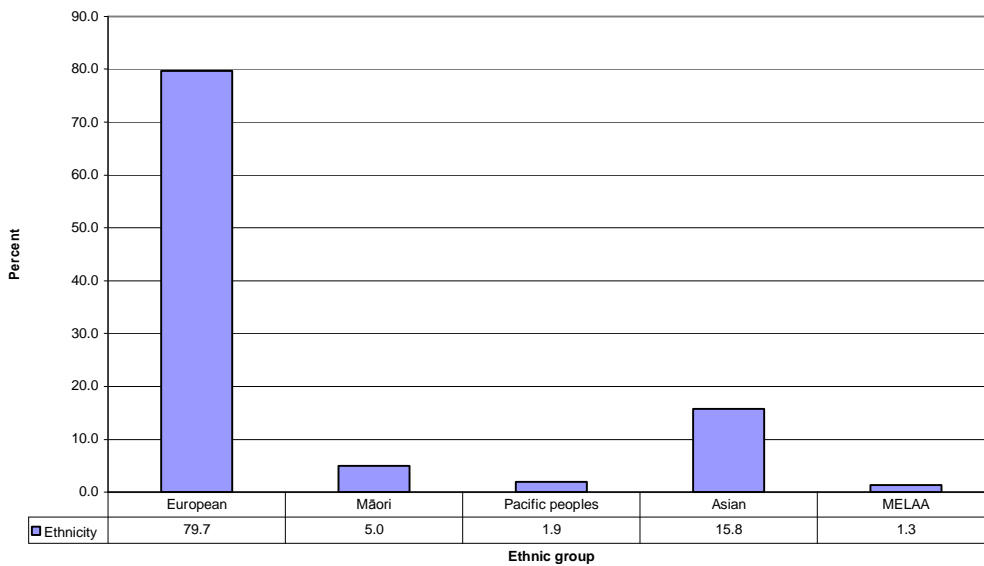
Source: Statistics New Zealand, usually resident population 2006

## 9.2.4 Ethnicity

Almost 80% of the Devonport-Takapuna population are European. Maori make up 5% of the population and Asian groups 15.8% (fig 9.5).

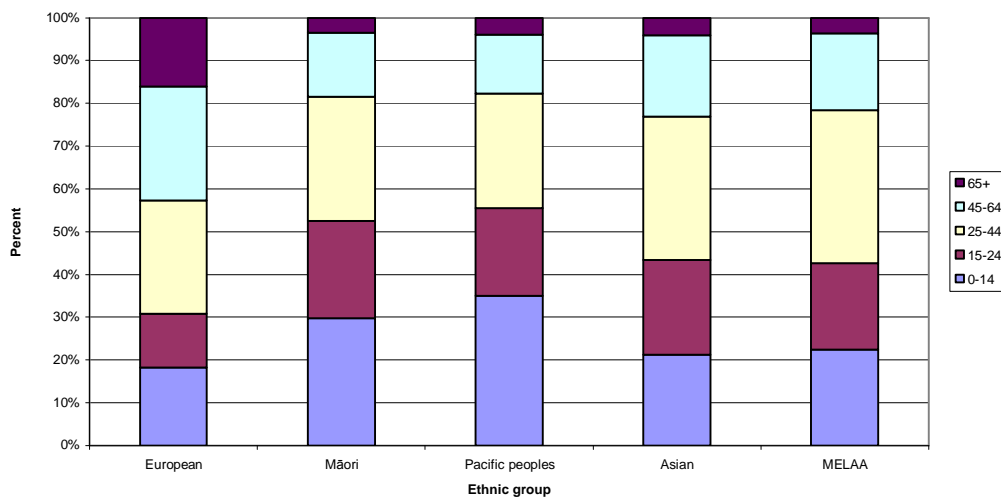
Maori and Pacific Island people have a higher proportion of their population in the young age groups than other ethnic groups (fig 9.6).

**Fig 9.5 Ethnic group, Devonport-Takapuna local board, 2006**



Source: Census 2006

**Fig 9.6 Ethnic group by age structure, Devonport-Takapuna local board 2006**



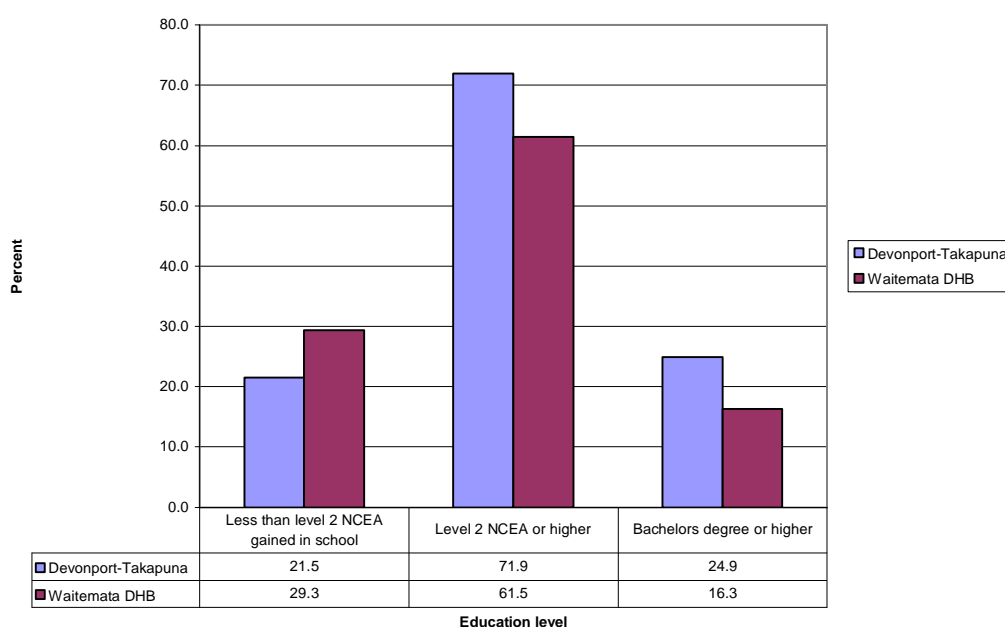
Source: Census 2006

## 9.2.5 Education level

There are 23 schools in the Devonport-Takapuna local board, one of which is a private school. All of the schools in this local board are high decile schools, rated 8, 9 or 10.<sup>8</sup>

Twenty one percent of the population aged greater than 15 years have obtained less than an NCEA level 2 qualification, compared to 29% of the Waitemata DHB population. Almost 25% of the population have obtained a bachelors degree or higher, compared to 16% of the Waitemata DHB population (fig 9.7).

**Fig 9.7 Education level, Devonport-Takapuna 2006**

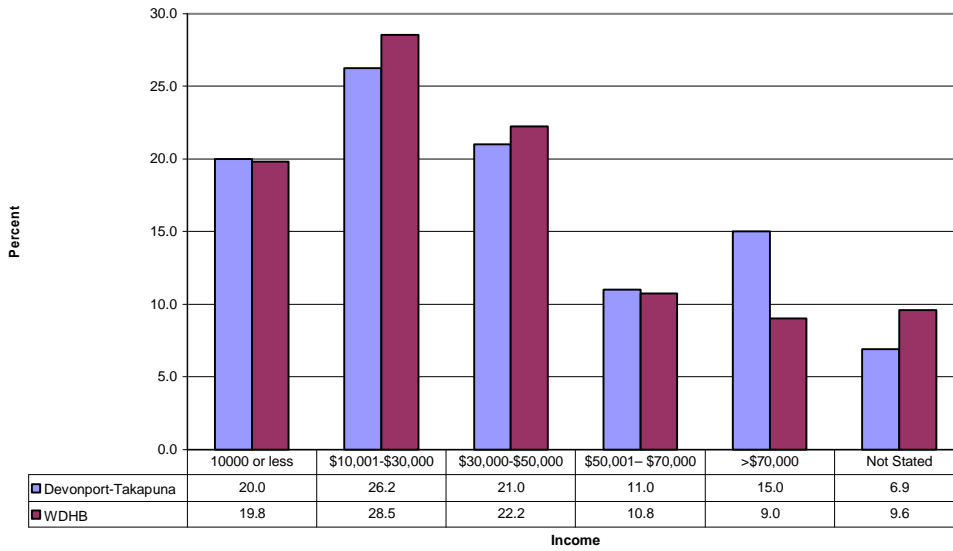


Source: Census 2006

## 9.2.6 Income

The median personal income of Devonport-Takapuna local board is \$30,555, which is higher than all other local boards in the Waitemata DHB district (table 17.9). Forty six percent of the population 15 years or over earned less than \$30,000 per annum, compared to 48.3% of the Waitemata DHB population (fig 9.8).

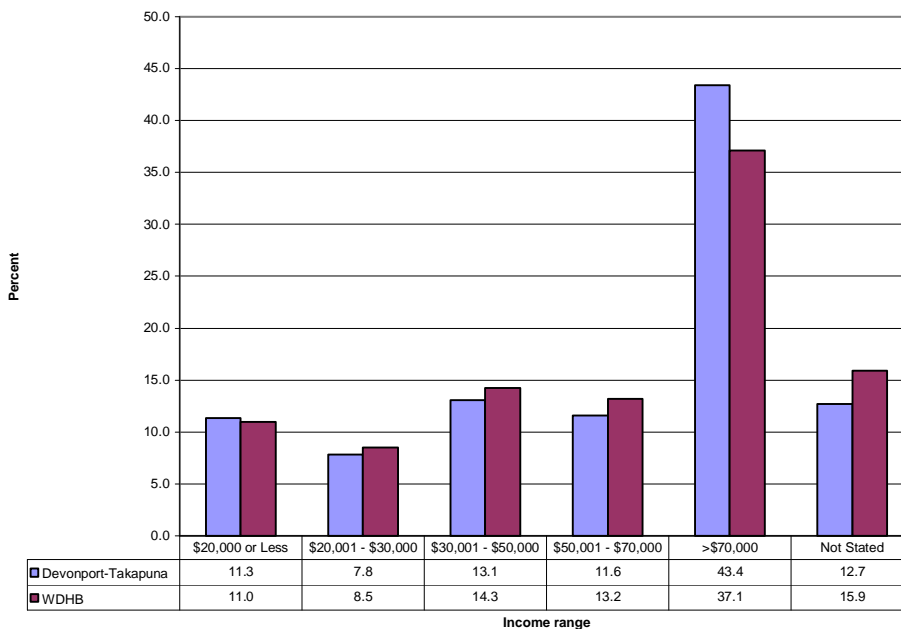
**Fig 9.8 Personal income, Devonport-Takapuna local board 2006**



Source: Census 2006

Approximately 19% of households in Devonport-Takapuna local board have an income of less than \$30,000 (fig 9.9). More than 43% of households have an annual income of greater than \$70,000 compared to 37% of all Waitemata DHB households. The median household income in this local board is \$68,745, which compares favourably with other local boards in the district (fig 17.8).

**Fig 9.9 Household income, Devonport-Takapuna local board 2006**

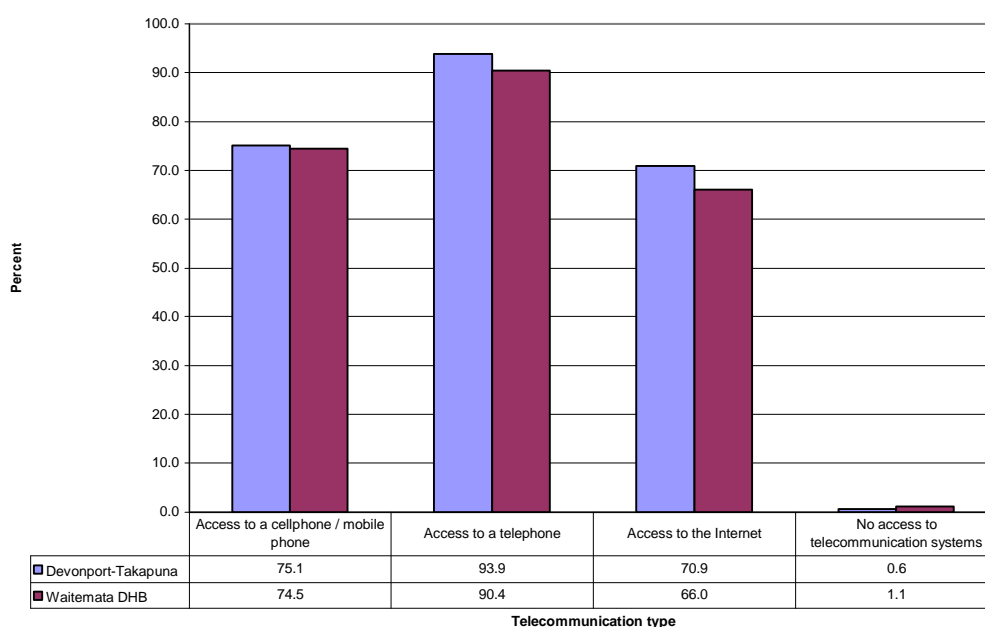


Source: Census 2006

## 9.2.7 Access to telecommunications

Less than one percent of the Devonport-Takapuna population have no access to telecommunication systems (fig 9.10). Greater than 90% of this population have access to a telephone.

**Fig 9.10 Access to telecommunications, Devonport-Takapuna local board 2006**



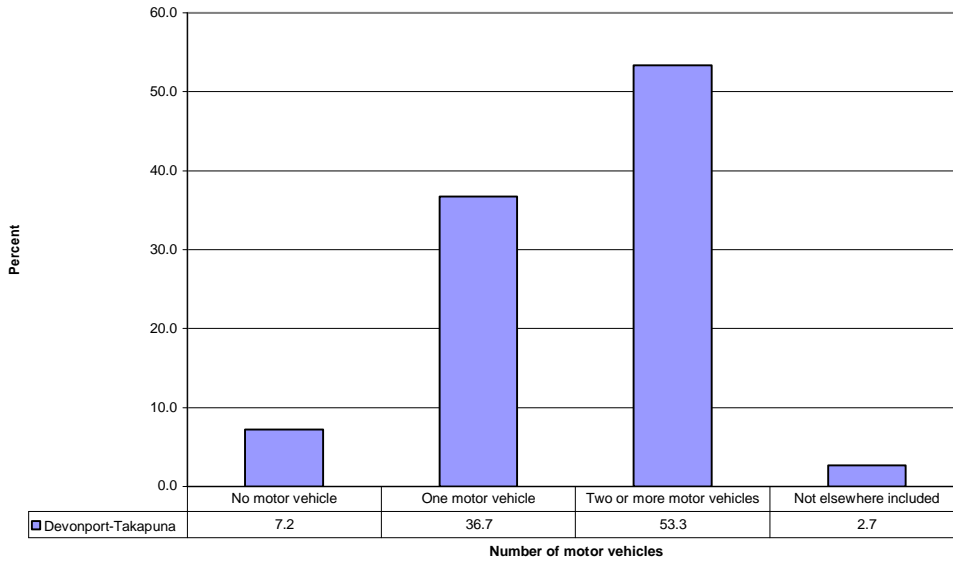
Source: Census 2006

## 9.2.8 Number of motor vehicles

Seven percent of Devonport-Takapuna local board households do not have access to a motor vehicle (fig 9.11). This is a high proportion compared to other local boards in the district (table 17.10). However over half of households have two or more motor vehicles (fig 9.11).



**Fig 9.11 Number of motor vehicles per household, Devonport-Takapuna local board 2006**

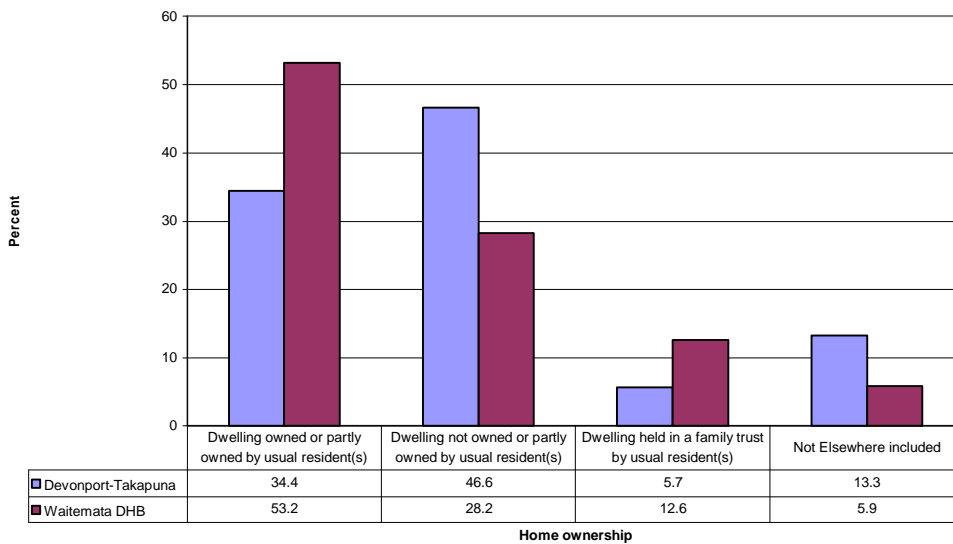


Not elsewhere included category includes not stated and response unidentifiable  
Source: Census 2006

### 9.2.9 Home ownership

Home ownership in the Devonport-Takapuna local board is lower than that of the entire DHB. Forty six percent of houses in the Devonport-Takapuna local board are not owned by the usual residents, compared to 28% throughout the DHB (fig 9.12).

**Fig 9.12 Home ownership, Devonport-Takapuna local board 2006**



Not elsewhere included category includes not stated and response unidentifiable  
Source: Census 2006

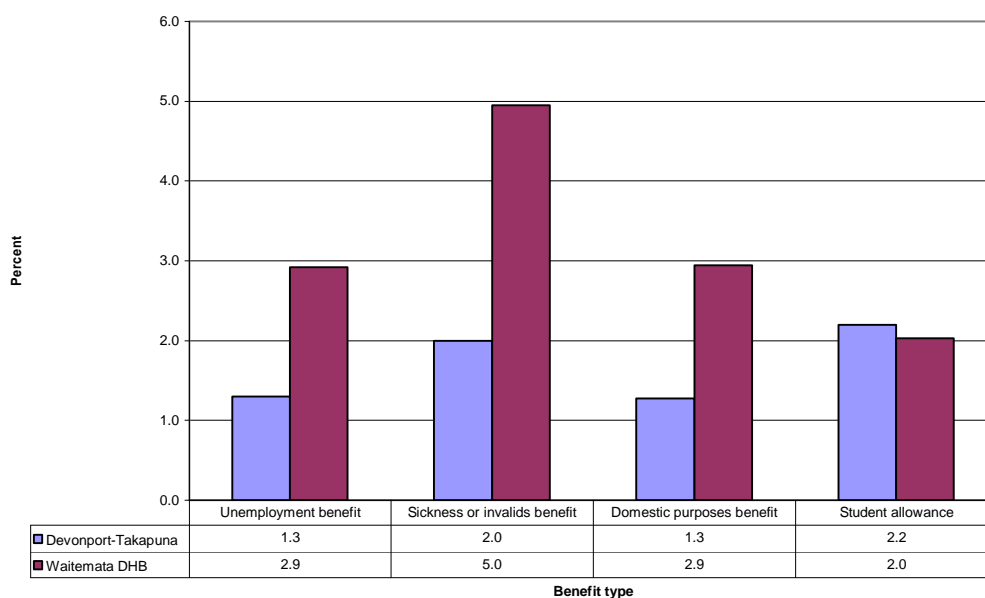
## 9.2.10 Benefit type and employment

Fifty one percent of Devonport-Takapuna residents aged 15 years or over were in full time employment in 2006, with a further 15% in part time employment.<sup>8</sup>

Devonport-Takapuna local board has 1.3% of its working age population receiving the unemployment benefit and 2% receiving the sickness benefit, compared to 2.9% and 5% respectively in the Waitemata DHB population (fig 9.13).

Employment decreased by five percent from 2000 to 2009 within Devonport-Takapuna (compared to 20% growth across the Auckland region). Most people who work in this area are employed in the health and social assistance sectors.<sup>8</sup>

**Fig 9.13 Percentage of population aged greater than 15 years on a benefit, Devonport-Takapuna local board 2006**

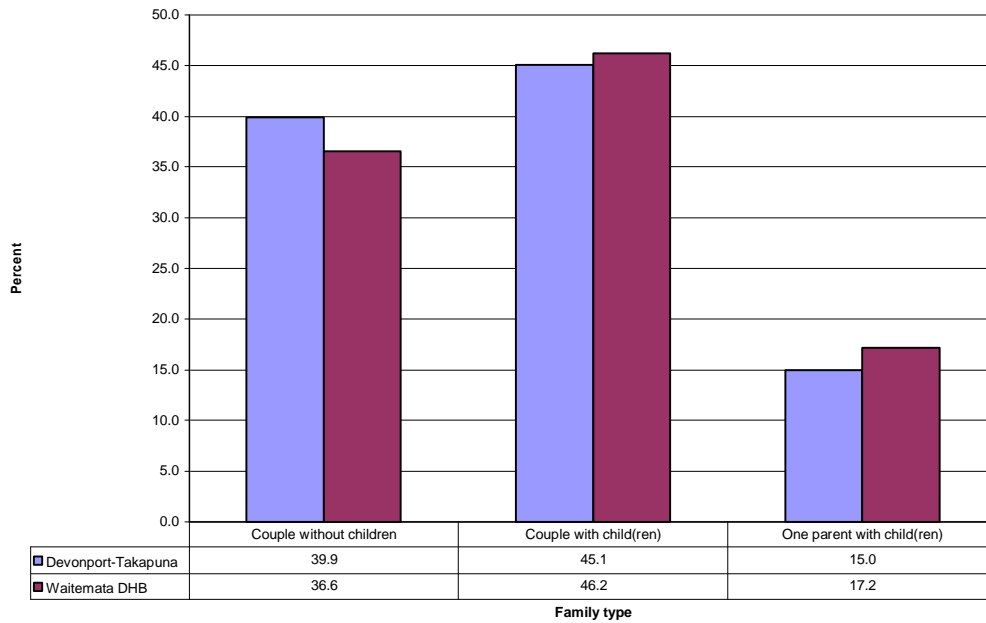


Source: Census 2006

## 9.2.11 Family composition

Fifteen percent of families in Devonport-Takapuna are single parent families, compared to 17.2% of all Waitemata DHB families (fig 9.14).

**Fig 9.14 Family type, Devonport-Takapuna local board 2006**



Source: Census 2006

## 9.3 Health determinants

### 9.3.1 Smoking

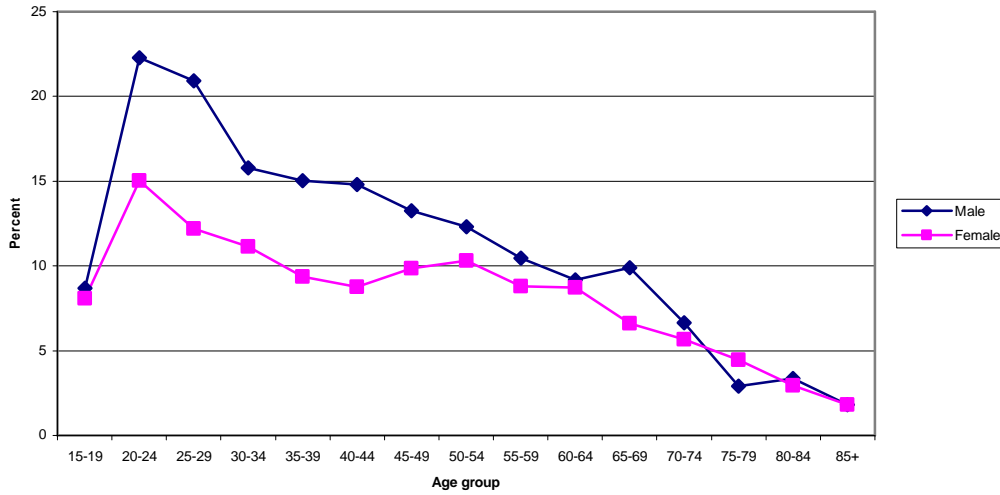
There were 4,704 adult smokers in the Devonport-Takapuna local board in 2006, making up 11.0% of the adult board population. At that time Devonport-Takapuna local board had an age standardised smoking rate of 118.0 per 1,000 people per year. This was the lowest rate of all local boards within Waitemata DHB (table 9.3). The rate was higher in males than females. The proportion of the population who smoked peaked in the 20 to 24 year age range and then declined with increasing age (fig 9.15).

**Table 9.3 Age standardised smoking status by gender, Devonport-Takapuna 2006**

	Male (per 1000 people per year)	Female (per 1000 people per year)	Total (per 1000 people per year)
Smoker	139.2	98.6	118
Previous smoker	212.8	183.5	195.9

Source: Statistics New Zealand

**Fig 9.15 Proportion of adults who smoke by age group and gender, Devonport-Takapuna local board 2006**

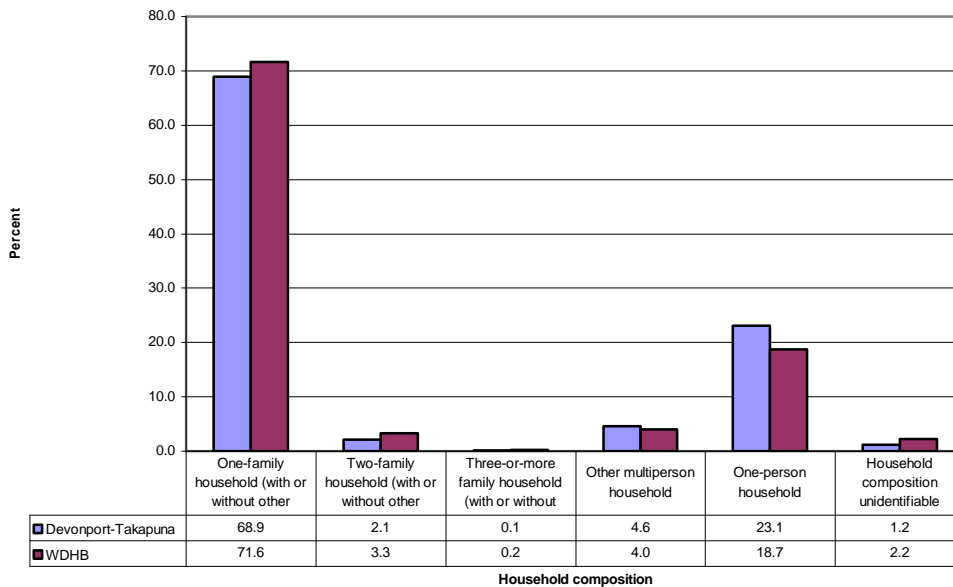


Source: Statistics New Zealand

### 9.3.2 Household composition

Two or more families share the same house in 2.2% of Devonport-Takapuna households, compared to 3.5% of households in all of the Waitemata DHB (fig 9.16). There is a higher proportion of single person households in Devonport-Takapuna than throughout all of Waitemata DHB.

**Fig 9.16 Household composition, Devonport-Takapuna local board 2006**



Source: Census 2006

## 9.4 Health need

### 9.4.1 Births

There were 630 live births in the Devonport-Takapuna local board during the 2009/2010 year. The birth rate over this period for women aged 15 to 49 years was 45.9 live births per 1,000 women

There were 20 live births to teenagers aged 15 to 19 years in the Devonport-Takapuna local board during this same period. The birth rate in this age group was 10.4 per 10,000 females per year.

### 9.4.2 Deaths

There were 348 deaths in the Devonport-Takapuna local board during the 2009/2010 year. The age standardised death rate was 32.2 per 10,000 people per year. Table 9.4 shows the age group specific death rate. The age standardised death rate for all of Waitemata DHB was 38.6 deaths per 10,000 people per year

**Table 9.4 Deaths by age group, Devonport-Takapuna 2009/2010**

Age group	Number of deaths	Age group specific rate (per 10000 people)
0-4	3	10.3
5-19	2	1.9
20-64	51	16.1
65+	292	401.7

Source: Statistics New Zealand

### 9.4.3 Acute hospitalisations

There were 6,635 acute hospitalisations for Devonport-Takapuna local board residents in the 2009/2010 year, making up 9.9% of all Waitemata DHB acute admissions. The age standardised admission rate was 100.4 per 1,000 people per year, which is low compared to that of the entire Waitemata DHB (table 9.5).

**Table 9.5 Age standardised acute hospitalisation rate, Devonport-Takapuna 2009/2010**

	Age standardised rate	95% CI
Devonport-Takapuna	100.4	97.8-103.0
WDHB	127.1	126.1-128.1

Source: NMDS

**Table 9.6 Acute hospitalisations by age group, Devonport-Takapuna 2009/2010**

Age group	Devonport-Takapuna		WDHB	
	Number	Rate (per 1000 people)	Number	Rate (per 1000 people)
0-4	194	66.3	3769	114.6
5-19	442	41.0	5893	54.7
20-44	1779	96.6	21271	121.7
45-64	1259	94.8	13916	122.7
65+	2961	407.3	21981	415.0

Source: NMDS

#### 9.4.4 Ambulatory Sensitive Hospitalisations

There were 623 ASH admissions from residents of the Devonport-Takapuna local board in 2009/2010, 7.1% of all ambulatory sensitive hospitalisations within the Waitemata DHB during this period. The age standardised ASH rate was 11.9 per 1,000 people per year, lower than all other boards in the Waitemata DHB district (table 9.7).

**Table 9.7 Age standardised ASH rate, Devonport-Takapuna 2009/2010**

	ASH Number	Age standardised rate (per 1000 people)
Devonport-Takapuna	623	11.9
WDHB	8760	18.8

Source: NMDS

#### 9.4.5 Low birth weight

There were 32 births classified as low birth weight in the Devonport-Takapuna Local Board during the 2009/2010 year. The low birth weight rate in Devonport-Takapuna was 48.1 per 1,000 live births during this time period. This is lower than the rate for the entire Waitemata DHB district.

#### 9.4.6 Acute mental health

There were 55 mental health hospital admissions for distinct people aged 15 years or over from the Devonport-Takapuna local board in 2009/2010. The age-standardised hospitalisation rate was 97.1 per 100,000 people per year (table 9.8). The highest age group specific hospitalisation rate was in the 20-44 year age group (table 9.9).

**Table 9.8 Age standardised mental health hospitalisation rate, Devonport-Takapuna 2009/2010**

	Age standardised hospitalisation rate (per 100000 people)	95% CI
Devonport-Takapuna	97.1	70.6-123.7
WDHB	114.9	105.3 – 124.4

Source: Waitemata DHB

**Table 9.9 Mental health hospitalisations by age group, Devonport-Takapuna 2009/2010**

Age group	Devonport-Takapuna		WDHB	
	Number	Rate (per 100000 people)	Number	Rate (per 100000 people)
15-19	2	50.5	23	63.7
20-44	30	162.9	314	179.7
45-64	16	120.5	156	137.5
65+	7	96.3	80	168.0

Source: Waitemata DHB

## 9.5 Health service utilisation

### 9.5.1 Mental Health

There were 834 distinct people seen in mental health outpatient clinics within the Devonport-Takapuna local board during the 2009/2010 year (table 9.10). The age standardised rate of mental health outpatient clinic utilisation of 14.2 per 1,000 people per year was lower than the rate for all of the Waitemata DHB population.

**Table 9.10 Mental health outpatient utilisation by unique individuals, Devonport-Takapuna 2009/2010**

	Number	ASR (per 1000 people per year)	95% CI
Devonport-Takapuna	834	14.2	13.2-15.2
WDHB	8921	17.5	17.1 – 17.8

Source: Waitemata DHB

### 9.5.2 Emergency department utilisation

There were 10,453 visits to the emergency department by distinct patients resident within the Devonport-Takapuna local board in 2009/2010. The age standardised rate of emergency department utilisation of 182.6 per 1,000 people was significantly lower than the rate for the entire Waitemata DHB population (table 9.11).

**Table 9.11 Emergency department utilisation by unique individuals, Devonport-Takapuna 2009/2010**

	Number	ASR (per 1000 people per year)	95% CI
Devonport-Takapuna	10453	182.6	178.9-186.4
WDHB	105894	214.7	213.6-215.9

Source: NN PAC

### 9.5.3 Pharmaceuticals

There were 435,791 pharmaceutical scripts used by Devonport-Takapuna local board residents in 2009/2010. The age standardised rate of script utilisation was significantly lower than the rate for the entire Waitemata DHB population (table 9.12).

**Table 9.12 Pharmaceutical script utilisation, Devonport-Takapuna 2009/2010**

	ASR (per person)	95% CI
Devonport-Takapuna	6.49	6.47-6.51
WDHB	7.12	7.11-7.13

Source: Pharmaceutical Collection

### 9.5.4 NASC

There were 973 NASC assessments in the Devonport-Takapuna local board in 2009/2010. Only 17 of these assessments were for people aged less than 65 years. The age standardised rate of NASC assessments was 7.6 per 1,000 people per year (table 9.13).

**Table 9.13 NASC assessment rate, Devonport-Takapuna 2009/2010**

	ASR (per 1000 people)	95% CI
Devonport-Takapuna	7.6	7.1-8.1
WDHB	8.3	8.1 – 8.6

Source: Waitemata DHB



There were 103,969 hours of care provided in the Devonport-Takapuna local board in 2009/2010, accounting for 13.6% of care hours provided within Waitemata DHB. The age standardised rate of care hour utilisation was significantly lower in the Devonport-Takapuna local board than throughout all of Waitemata DHB (table 9.14).

**Table 9.14 Care hours utilisation, Devonport-Takapuna 2009/2010**

	<b>ASR (per 1000 people)</b>	<b>95% CI</b>
Devonport-Takapuna	751.1	746.2-755.9
WDHB	965.2	963.0-967.4

Source: Waitemata DHB

### **9.5.5 Elective admissions**

There were 2,095 elective hospital admissions in the Devonport-Takapuna local board area during the 2009/2010 year. The age standardised elective admission rate was lower for Devonport-Takapuna than for the entire Waitemata DHB population (table 9.15).

**Table 9.15 Elective admissions, Devonport-Takapuna 2009/2010**

	<b>Number</b>	<b>ASR (per 1000 people)</b>	<b>95% CI</b>
Devonport-Takapuna	2095	31.8	30.3-33.3
WDHB	22376	40.9	40.3-41.4

Source: NMDS

## 9.6 Specific health needs

The 10 most common diagnoses for potentially avoidable hospitalisations in the Devonport-Takapuna local board are given in table 9.16. The conditions are similar for all local boards and the top three conditions are the same for all boards.

**Table 9.16 Most common potentially avoidable hospitalisation diagnoses, Devonport-Takapuna 2009/2010**

Devonport-Takapuna	Percentage of all conditions	WDHB	Percentage of all conditions
IHD/angina/chest pain	28.3	IHD/angina/chest pain	24.1
Respiratory infections	11.5	Respiratory infections	12.4
Cellulitis	8.2	Cellulitis	8.6
Ruptured appendix	6.2	ENT infections	6.0
Kidney/urinary tract infection	5.5	Asthma	4.9
ENT infections	4.9	Dental conditions	4.6
Dental conditions	4.2	CORD	4.4
Stroke	3.2	Kidney/urinary infection	4.2
Nutrition	2.8	Ruptured appendix	3.3
Asthma	2.6	Gastroenteritis	2.7
Skin cancers	2.6		

Source: NMDS

## 9.7 Service Volumes

The volumes of distinct patients from Devonport-Takapuna seen in outpatient clinics over the 2009/2010 year are shown in table 9.17. Initial appointment volumes are low for specialist paediatric clinics. However volumes for many of the other services are likely to be able to support some outpatient clinics within the local board.

**Table 9.17 Community service volumes of unique individuals, Devonport-Takapuna 2009/2010**

Service type – Devonport-Takapuna	Patient volumes	
	Initial appointment	Subsequent appointments
<b>Adult services</b>		
Cardiology Outpatients	443	884
Diabetes Outpatients	83	194
General Medical Outpatients	266	372
General Surgical Outpatients	381	1243
<b>Paediatric services</b>		
General paediatric outpatients	265	220
Paediatric cardiology outpatients	28	72
Paediatric neurology outpatients	17	170
Paediatric endocrinology outpatients	20	149
Paediatric respiratory outpatients	3	53
Paediatric oncology outpatients	3	115
Total Paediatrics outpatients	336	779
<b>Older Adult services</b>		
Health of Older Adult Services outpatients	427	
<b>District Nursing Referrals</b>	864	
<b>Mental Health outpatients</b>		
0 – 19 age group	165	
20 – 64 age group	489	
65+ age group	180	
<b>Total</b>	834	

Source: NN PAC and Waitemata DHB

## 9.8 Health services

### 9.8.1 General practitioner

There were 55 GPs working in the Devonport-Takapuna local board during the last three months of 2009. This is equivalent to 104 GPs per 100,000 population. There were 65 GPs per 100,000 population across the Waitemata DHB at that time. There are 19 GP practices within the Devonport-Takapuna Local Board. Between 60% and 70% of the local board population live within one kilometre of a GP premise.

Almost 70% of the Devonport-Takapuna population were enrolled in a GP practice within their own local board, during this same period.

### 9.8.2 Aged care residences

There are six aged care residential facilities in the Devonport-Takapuna local board. Between 60% and 70% of the local board population live within two kilometres of an aged care residence. These facilities provide a total of 105 rest home beds, 164 hospital care beds and 14 dementia care beds (table 9.18).

**Table 9.18 Aged residential care bed numbers, Devonport-Takapuna 2010**

Bed type	Number of beds	Beds per 1000 residents aged 65 years and over
Rest home bed	105	14.4
Hospital care bed	164	22.6
Dementia care bed	14	1.9

Source: Ministry of Health 2010 certified facilities database and Eldernet

### 9.8.3 Birthing units

North Shore Hospital is situated in the Devonport-Takapuna local board. The hospital includes a birthing unit, with 10 birthing beds (table 9.19). There are no private birthing facilities within the local board.

**Table 9.19 Birthing unit bed numbers, Devonport-Takapuna 2010**

Bed type	Number
Birthing	10
Postnatal	36
Antenatal assessment	4
Total	50

Source: Waitemata DHB

#### **9.8.4 After Hours GP services**

There is one 24 hour GP service in the Devonport-Takapuna Local Board. In addition to this the emergency department of North Shore Hospital provides 24 hour care (table 9.20).

**Table 9.20 After hours GP practices, Devonport-Takapuna 2010**

After hours GP practice	Hours open
Shorecare Milford	24 hours a day, 7 days a week

Source: Waitemata DHB

#### **9.8.5 Hospitals and Hospices**

There is one hospital and one hospice in the Devonport-Takapuna local board.

North Shore Hospital is a publicly funded hospital. It has 131 surgical beds and 163 medical beds.

The North Shore Hospice, located in the Devonport-Takapuna local board has 14 beds.

#### **9.8.6 DHB community services**

##### **Mental health services**

A number of community mental health services are based within the Devonport-Takapuna local board (table 9.21). Two adult mental health teams are based at the Taharoto Road site in Takapuna. Together these two teams serve the population of the North Shore ward and parts of the Albany ward.

**Table 9.21 DHB community mental health services, Devonport-Takapuna 2010**

<b>Mental health service</b>	<b>Location</b>
Adult mental health services	Taharoto road, Takapuna
Mental health services for older adults	North Shore Hospital
ECT clinic	North Shore Hospital
Early Psychosis Intervention team	North Shore Hospital
Intensive clinical support services	North Shore Hospital
Maternal mental health	North Shore Hospital
Marinoto North team	North Shore Hospital
Whitiki Maurea	Taharoto Road, Takapuna
Takanga a Fohe (Taharoto Road)	Taharoto Road, Takapuna
CADS North	Como Street, Takapuna
CADS North satellite clinic	NZ Navy, Devonport

Source: Waitemata DHB

### **Surgical outpatient services**

A range of surgical outpatient clinics are available at North Shore Hospital, located within the Devonport-Takapuna local board.

### **Paediatric services**

Paediatric outpatient clinics are held at the North Shore Hospital and at the Wilson Centre, both located within the Devonport-Takapuna local board. The Wilson Centre is a respite and rehabilitation centre which provides rehabilitation for children and young people with orthopaedic and neurological conditions. Public health nurses are based at the North Shore Hospital.

**Table 9.22 Paediatric community services, Devonport-Takapuna 2010**

<b>Paediatric service</b>	<b>Location</b>
Paediatric outpatient clinics	North Shore Hospital Wilson Centre
Public Health Nurse	North Shore Hospital
Rehabilitation and respite	Wilson Centre
Home care 4 kids	North Shore Hospital

Source: Waitemata DHB

**Table 9.23 List of schools in which Waitemata DHB public health nurses have a presence, Devonport-Takapuna 2010**

Schools
Campbells Bay Primary Murrays Bay Primary Westlake Girls Sunnynook Primary Takapuna Normal Intermediate Stanley Bay Primary Devonport Primary Vauxhall Primary Bayswater Primary Westlake Boys Belmont Intermediate Hauraki Primary Belmont Primary Rosmini College Takapuna Grammar Carmel College Forrest Hill Primary Milford Primary St Joseph's Primary St Leo's Primary Wairau Intermediate Takapuna Primary Coatesville Primary Wilson School

Source: Waitemata DHB

### Health services for older people

Regular outpatient clinics for older people are held at the North Shore Hospital (table 9.25). NASC and district nursing staff are also based at the North Shore Hospital. District nursing is available seven days a week, from 8.00am until 9.30pm.

**Table 9.24 Community allied health services, Devonport-Takapuna 2010**

Community Allied Health Services	Location
- Occupational therapist - Physiotherapist - Dietician - Speech language therapist - Gerontology nurses	North Shore Hospital

Source: Waitemata DHB

**Table 9.25 Health services for older people, Devonport-Takapuna 2010**

Health service	Location
NASC	North Shore Hospital
Geriatrician Monday - Consultant and registrar clinic Tuesday - memory clinic - Registrar clinic Wednesday - 2 consultant clinics - Nurse practitioner clinic Thursday - stroke clinic - 2 consultant and senior nurse Alternate Fridays - Consultant clinic	North Shore Hospital
District nursing 15.98 FTE (actual and budgeted)	North Shore Hospital

Source: Waitemata DHB

A range of community allied health services are also based at the North Shore Hospital within the Devonport-Takapuna local board (table 9.25).

### **Diabetes services**

Diabetes outpatient clinics are held at the North Shore Hospital site in Takapuna. These include individual and family outpatient consultations and education by consultants, clinical nurse specialists and dieticians.

### **Medical outpatient clinics**

A range of medical outpatient clinics are held at the North Shore Hospital.